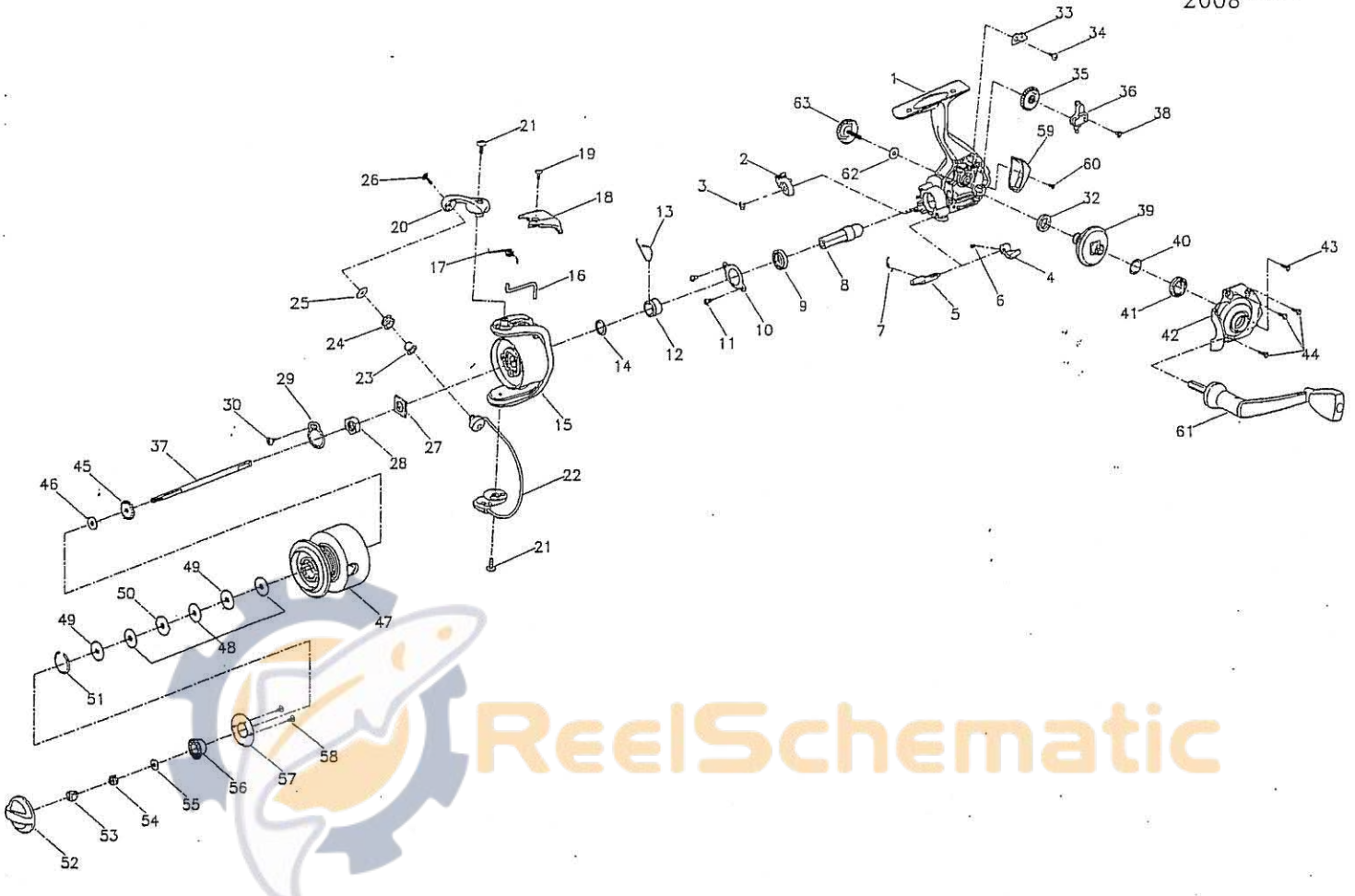


Use this parts list for ordering replacement parts for your Shakespeare Spinning Reel. When ordering, please specify which reel you own and the model number printed on the reel body.

ENC230F  
2008



Part #	Part Name
1	BODY ASSEMBLY
2	N-R PAWL
3	"E" WASHER - 1145278
4	N-R LEVER
5	N-R LEVER SHAFT
6	N-R LEVER SCREW
7	N-R LEVER SPRING
8	PINION
9	BALL BEARING 14X8X3.5 - 1145073
10	BEARING COVER
11	BEARING COVER SCREW
12	N-R SPRING HOLDER
13	N-R SPRING - 1146794
14	SPACER
15	ROTOR ASSEMBLY
16	TRIP PLUNGER
17	BAIL ARM SPRING
18	BAIL ARM COVER
19	SCREW COVER
20	BAIL ARM
21	BAIL ARM SCREW
22	BAIL WIRE ASSEMBLY - 1145043 (225) 1145044 (230)
23	LINE ROLLER BUSHING - 1146340
24	LINE ROLLER - 1146128
25	LINE ROLLER WASHER - 1146856
26	LINE ROLLER SCREW - 1146156
27	LOCK WASHER
28	ROTOR NUT
29	ROTOR NUT WASHER
30	ROTOR NUT SCREW
32	BUSHING OR BEARING 12X8X2.5 - 1145076
33	O/S SLIDER PLATE
34	O/S SLIDER PLATE SCREW
35	O/S GEAR
36	O/S SLIDER
37	MAIN SHAFT
38	O/S SLIDER PLATE SCREW
39	DRIVE GEAR
40	GEAR WASHER - 1146817
41	BUSHING OR BEARING 14X8X3.5 - 1145073
42	BODY COVER ASSEMBLY
43	COVER SCREW A
44	COVER SCREW B - 1146209
45	CLICK GEAR - 1146029
46	SHEET WASHER - 1146805
47	SPOOL ASSEMBLY
48	DRAG WASHER
49	LINING WASHER
50	SPOOL WASHER
51	STOP RING
52	DRAG KNOB
53	DRAG NUT
54	DRAG SPRING
55	DRAG SPRING WASHER
56	DRAG KNOB COVER
57	COVER PLATE
58	DRAG KNOB SCREW
59	REAR COVER
60	REAR COVER SCREW
61	HANDLE ARM ASSEMBLY
62	HANDLE LOCK WASHER
63	HANDLE LOCK