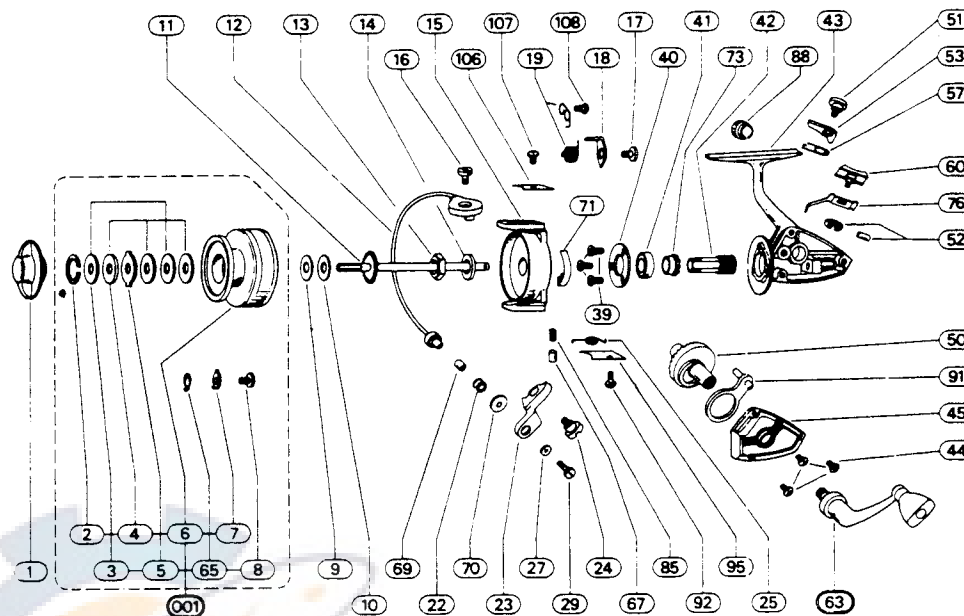


2200-030



*Old model*

REF NO.	PART NO.	DESCRIPTION	REF NO.	PART NO.	DESCRIPTION
001	79-66-0073-01	Spool Assy.	41	79-04-0001-01	Ball Bearing
1	79-40-0064-01	Drag Nut	42	79-46-0029-01	Pinion
2	79-54-0019-01	Retainer Ring	43	N/A	Frame
3	79-72-0217-01	Washer (Metal)	44	79-58-0145-01	Cover Plate Screw
4	79-72-0218-01	Washer (Fiber)	45	79-47-0091-01	Cover Plate
5	79-72-0219-01	Eared Washer	50	79-28-0040-01	Drive Gear
7	79-43-0040-01	Click Pawl	51	79-58-0069-01	N-R Pawl Screw
8	79-58-0141-01	Click Pawl Screw	52	79-54-0020-01	Retainer Pin
9	79-72-0220-01	Rear Drag Washer	53	79-43-0022-01	N-R Pawl
10	79-72-0220-01	Rear Drag Washer	57	79-67-0043-01	N-R Pawl Spring
11	79-60-0037-01	Main Shaft	60	79-10-0018-01	N-R Button
12	79-03-0032-01	Bail Wire	63	79-20-0057-01	Crank Assy.
13	79-40-0001-01	Pickup Nut	65	79-67-0076-01	Click Spring
14	79-72-0221-01	Pickup Washer	67	79-00-0005-01	Ball Stop
15	N/A	Pickup Housing	69	79-63-0010-01	Roller Sleeve
16	79-58-0144-01	Bail Screw	70	79-21-0005-01	Roller Cap
17	79-58-0060-01	Trip Lever Screw	71	79-00-0008-01	Stop
18	79-37-0037-01	Trip Lever	73	79-50-0001-01	Ratchet
19	79-67-0037-01	Trip Lever Spring	76	79-02-0007-01	Throwout Arm
22	79-57-0007-01	Line Roller	85	79-67-0004-01	Bail Stop Spring
23	79-07-0024-01	Bail Bracket	88	79-12-0008-01	Crank Cap
24	79-58-0142-01	Bail Bracket Screw	91	79-37-0036-01	Level Wind Lever
25	79-67-0041-01	Bail Spring	92	79-58-0143-01	Bail Spring Plate Screw
27	79-72-0169-01	Roller Screw Washer	95	79-47-0090-01	Bail Spring Plate
29	79-58-0065-01	Roller Screw	106	79-47-0092-01	Trip Lever Plate
39	79-58-0076-01	Bearing Retainer Screw	107	79-58-0146-01	Trip Lever Plate Screw
40	79-53-0029-01	Bearing Retainer	108	79-58-0076-01	Trip Lever Spring Screw