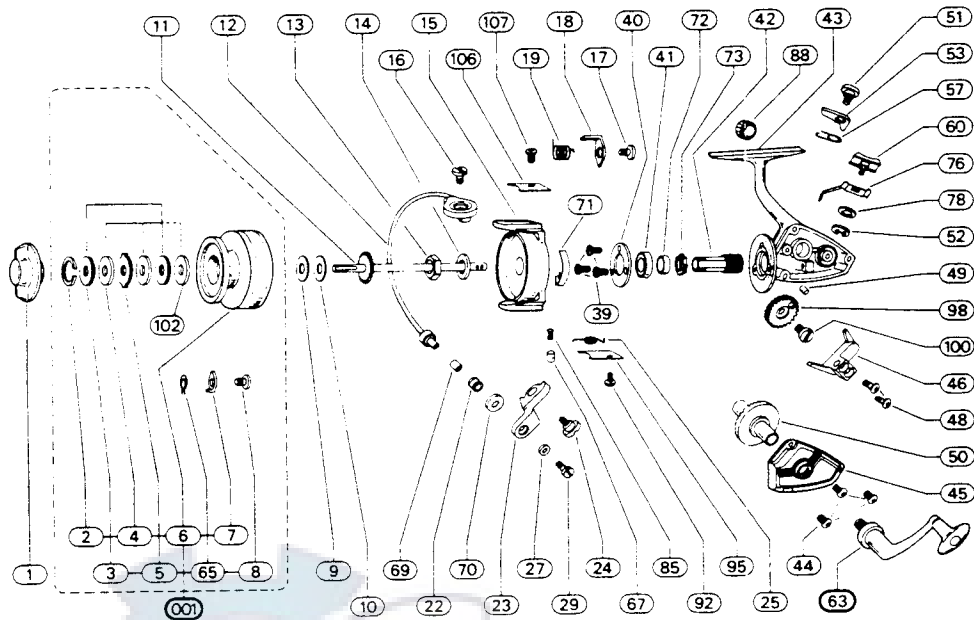


2200-050



Old Model

REF. NO.	PART NO.	DESCRIPTION	REF. NO.	PART NO.	DESCRIPTION
001	79-66-0076-01	Spool Assy.	44	79-58-0150-01	Cover Screw
1	79-40-0061-01	Drag Nut	45	79-47-0099-01	Cover Plate
2	79-54-0003-01	Retainer Ring	46	79-75-0013-01	Level Wind Yoke
3	79-72-0122-01	Metal Washer	48	79-58-0068-01	Level Wind Yoke Screw
4	79-72-0126-01	Fiber Washer	49	79-57-0008-01	Level Wind Roller
5	79-72-0130-01	Eared Washer	50	79-28-0020-01	Drive Gear
7	79-43-0005-01	Click Pawl	51	79-58-0012-01	N-R Pawl Screw
8	79-58-0001-01	Click Pawl Screw	52	79-54-0002-01	N-R Button Retainer
9	79-72-0151-01	Rear Washer	53	79-43-0003-01	N-R Pawl
10	79-72-0151-01	Rear Washer	57	79-67-0008-01	N-R Pawl Spring
11	79-60-0040-01	Main Shaft	60	79-10-0020-01	N-R Button
12	79-03-0035-01	Bail Wire Assy.	63	79-20-0059-01	Crank Assy.
13	79-40-0006-01	Pickup Nut	65	79-67-0009-01	Click Pawl Spring
14	79-72-0010-01	Pickup Washer	67	79-00-0002-01	Bail Stop
15	N/A	Pickup Housing	69	79-63-0001-01	Roller Sleeve
16	79-58-0151-01	Bail Screw	70	79-21-0001-01	Roller Cup
17	79-58-0075-01	Trip Lever Screw	71	79-08-0002-01	Bail Brake
18	79-43-0020-01	Trip Lever	72	79-63-0003-01	Sleeve
19	79-67-0039-01	Trip Lever Spring	73	79-50-0002-01	Ratchet
22	79-57-0001-01	Line Roller	76	79-02-0009-01	Throwout Arm
23	79-07-0013-01	Bail Bracket	78	79-72-0120-01	Button Retainer Washer
24	79-58-0151-01	Bail Bracket Screw	85	79-67-0004-01	Bail Stop Spring
25	79-67-0042-01	Bail Spring	88	79-12-0009-01	Crank Cap
27	79-72-0157-01	Roller Lock Washer	92	79-58-0149-01	Bail Spring Plate Screw
29	79-58-0050-01	Roller Screw	95	79-47-0100-01	Bail Spring Cover Plate
39	79-58-0032-01	Bearing Retainer Screw	98	79-28-0022-01	Gear
40	79-53-0015-01	Bearing Retainer	100	79-58-0071-01	Gear Screw
41	79-04-0003-01	Ball Bearing	106	79-47-0101-01	Trip Lever Cover Plate
42	79-46-0019-01	Pinion	107	79-58-0143-01	Trip Lever Plate Screw
43	N/A	Frame Assy.			