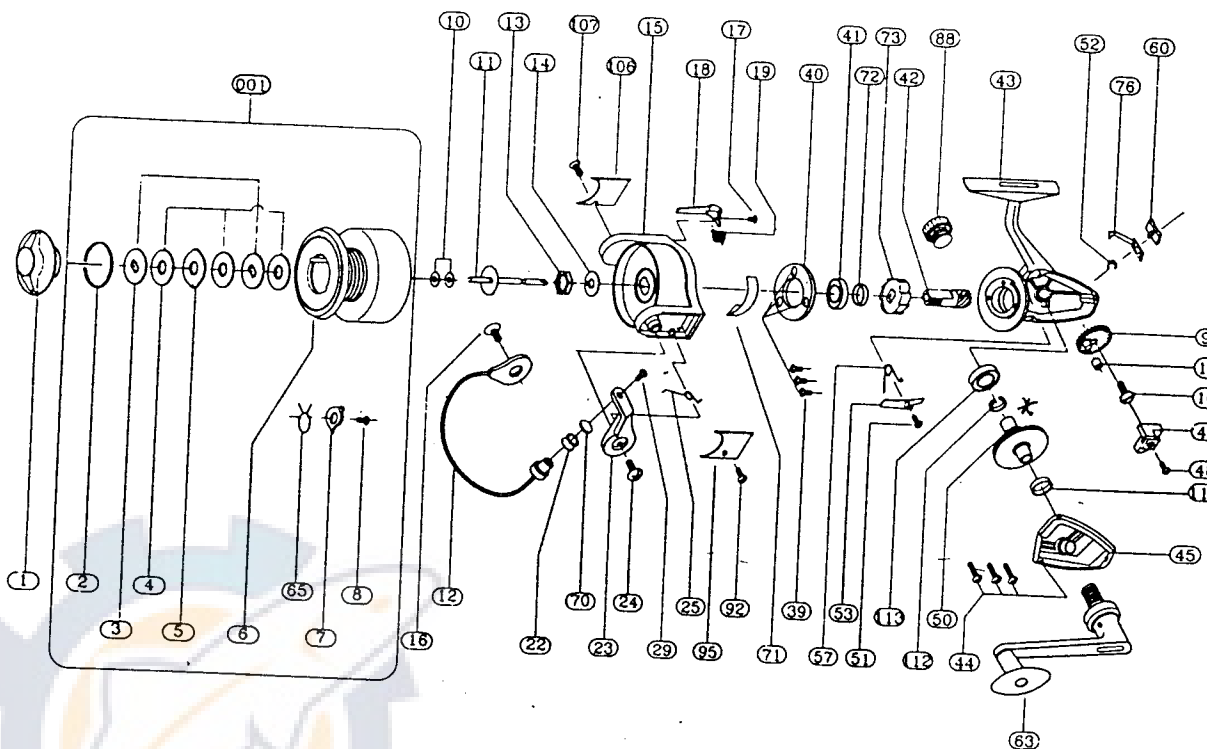


Shakespeare®

2200-070

2200-070 (NE)
w/ Gold Spool



| REF # | PART NUMBER | DESCRIPTION | REF # | PART NUMBER | DESCRIPTION |
|-------|---------------|---------------------|-------|---------------|------------------------|
| 001 | 79-66-0254-01 | SPOOL ASSEMBLY | 1 | 79-40-0207-01 | DRAG NUT |
| 2 | 79-54-0129-01 | RETAINER RING | 3 | 79-72-0661-01 | METAL WASHER |
| 4 | 79-72-0662-01 | FIBER WASHER | 5 | 79-72-0663-01 | EARED WASHER |
| 7 | 79-43-0127-01 | CLICK PAWL | 8 | 79-58-0641-01 | CLICK PAWL SCREW |
| 10 | 79-72-0666-01 | REAR WASHER | 11 | 79-60-0154-01 | MAIN SHAFT |
| 12 | 79-03-0126-01 | BAIL WIRE | 13 | 79-40-0210-01 | PICKUP NUT |
| 14 | 79-72-0669-01 | PICKUP WASHER | 15 | 79-34-0151-01 | PICKUP HOUSING |
| 16 | 79-58-0643-01 | BAIL SCREW | 17 | 79-58-0646-01 | TRIP LEVER SCREW |
| 18 | 79-37-0203-01 | TRIP LEVER | 19 | 79-67-0682-01 | TRIP LEVER SPRING |
| 22 | 79-57-0053-01 | LINE ROLLER | 23 | 79-07-0090-01 | BAIL BRACKET |
| 24 | 79-58-0649-01 | BRACKET SCREW | 25 | 79-67-0663-01 | BAIL SPRING |
| 29 | 79-58-0652-01 | ROLLER SCREW | 39 | 79-58-0653-01 | BEARING RETAINER SCREW |
| 40 | 79-53-0067-01 | BEARING RETAINER | 41 | 79-04-0082-01 | BALL BEARING |
| 42 | 79-46-0106-01 | PINION | 43 | 79-27-0179-01 | FRAME |
| 44 | 79-58-0657-01 | COVER PLATE SCREW | 45 | 79-47-0415-01 | COVER PLATE |
| 46 | 79-75-0071-01 | LEVEL WIND YOKE | 48 | 79-58-0658-01 | YOKE SCREW |
| 50 | 79-28-0187-01 | DRIVE GEAR | 51 | 79-58-0661-01 | NON-REV PAWL SCREW |
| 52 | 79-15-0056-01 | E-CLIP | 53 | 79-43-0131-01 | NON-REV PAWL |
| 57 | 79-67-0668-01 | NON R/PAWL SPRING | 60 | 79-10-0087-01 | N-R BUTTON |
| 63 | 79-20-0158-01 | CRANK ASSEMBLY | 65 | 79-67-0669-01 | CLICK SPRING |
| 70 | 79-21-0043-01 | ROLLER CUP | 71 | 79-00-0035-01 | BAIL STOP |
| 72 | 79-63-0032-01 | SLEEVE | 73 | 79-50-0066-01 | RATCHET |
| 76 | 79-02-0037-01 | THROWOUT ARM | 88 | 79-12-0062-01 | CRANK CAP |
| 92 | 79-58-0666-01 | BAIL SPRING P/SCREW | 95 | 79-47-0421-01 | BAIL SPRING PLATE |
| 98 | 79-28-0199-01 | OSCILLATION GEAR | 100 | 79-58-0669-01 | GEAR SCREW |
| 106 | 79-47-0426-01 | TRIP LEVER PLATE | 107 | 79-58-0666-01 | TRIP LEVER P/SCREW |
| 112 | 79-11-0063-01 | CAM | 113 | 7904008701 | BALL BEARING |
| 4 | 7909004501 | WEAR BUSHING | 115 | 79-09004601 | BRASS BUSHING |

REVISED 6-11-96 REF# 95 AND 107
REVISED 1-9-97 REF# 113 SUB 79-04-0081-01

* o/s PINION GEAR