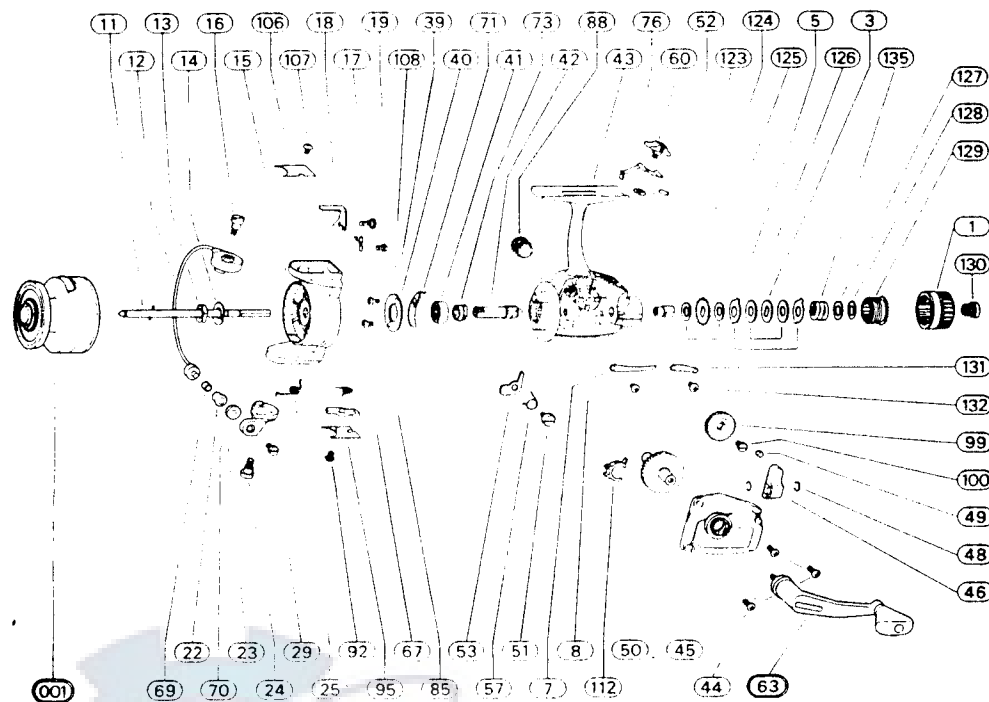


2300-035



REF. NO.	PART NO.	DESCRIPTION	REF. NO.	PART NO.	DESCRIPTION
001	79-66-0112-01	Spool Assembly	52	79-54-0002-01	Retainer Ring
1	79-40-0085-01	Drag Nut	53	79-43-0056-01	Non-Reverse Pawl
3	79-72-0249-01	Metal Washer	57	79-67-0124-01	Non-Reverse Pawl Spring
5	79-72-0247-01	Eared Washer	60	79-10-0019-01	Non-Reverse Button
7	79-67-0094-01	Click Spring	63	79-20-0086-01	Crank Assembly
8	79-58-0070-01	Click Screw	67	79-10-0023-01	Bail Release Button
11	79-60-0064-01	Main Shaft	69	79-63-0001-01	Line Roller Sleeve
12	79-03-0033-01	Bail Wire	70	79-21-0001-01	Line Roller Cup
13	79-40-0001-01	Pickup Nut	71	79-08-0009-01	Bail Brake
14	79-72-0006-01	Pickup Washer	73	79-50-0035-01	Ratchet
15	Not Available	Pickup Housing	76	79-02-0024-01	Throwout Arm
16	79-58-0147-01	Bail Screw	85	79-67-0090-01	Release Button Spring
17	79-58-0060-01	Trip Lever Screw	88	79-12-0008-01	Crank Cap
18	79-37-0047-01	Trip Lever	92	79-58-0143-01	Plate Screw
19	79-67-0037-01	Trip Lever Spring	95	79-47-0127-01	Bail Spring Plate
22	79-57-0001-01	Line Roller	99	79-28-0052-01	Gear
23	79-07-0031-01	Bail Bracket	100	79-58-0164-01	Gear Screw
24	79-58-0147-01	Bail Bracket Screw	106	79-47-0128-01	Trip Lever Plate
25	79-67-0048-01	Bail Spring	107	79-58-0143-01	Plate Screw
29	79-58-0050-01	Roller Screw	108	79-58-0074-01	Trip Spring Screw
39	79-58-0076-01	Retainer Screw	112	79-11-0015-01	Silent Non-Reverse Cam
40	79-53-0017-01	Bearing Retainer	123	79-60-0047-01	Drag Shaft
41	79-04-0001-01	Ball Bearing	124	79-72-0250-01	Vinyl Washer
42	79-46-0048-01	Pinion	125	79-72-0251-01	Latch Washer
43	Not Available	Frame Assembly	126	79-72-0248-01	Rulon Washer
44	79-58-0148-01	Cover Screws	127	79-72-0254-01	Metal Washer
45	79-47-0159-01	Cover Plate	128	79-72-0255-01	Nylon Washer
46	79-75-0026-01	Level Wind Yoke	129	79-50-0030-01	Drag Ratchet
48	79-15-0012-01	Retainer Clip	130	79-58-0163-01	Drag Nut Screw
49	79-57-0014-01	Roller	131	79-37-0046-01	Lever
50	79-28-0069-01	Drive Gear	132	79-58-0070-01	Lever Screw
51	79-58-0006-01	Non-Reverse Pawl Screw	135	79-67-0121-01	Drag Spring