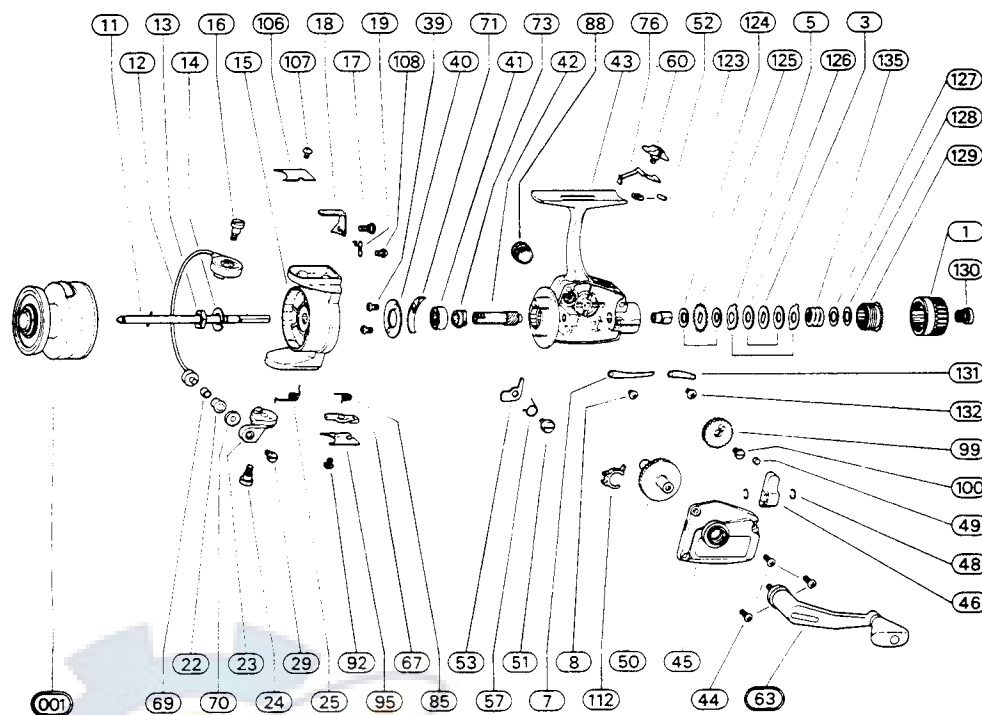


2300-050



REF. NO.	PART NO.	DESCRIPTION	REF. NO.	PART NO.	DESCRIPTION
001	79-66-0114-01	Spool Assembly	51	79-58-0012-01	Non-Reverse Pawl Screw
1	79-40-0090-01	Drag Nut	52	79-54-0002-01	Retainer Ring
2	79-54-0032-01	Retainer Ring	53	79-43-0066-01	Non-Reverse Pawl
3	79-72-0268-01	Metal Washer	57	79-67-0099-01	Non-Reverse Pawl Spring
5	79-72-0266-01	Eared Washer	60	79-10-0020-01	Non-Reverse Button
7	79-67-0100-01	Click Spring	63	79-20-0088-01	Crank Assembly
8	79-58-0010-01	Click Spring Screw	67	79-10-0025-01	Bail Release Button
9	79-72-0117-01	Rear Washer	69	79-63-0001-01	Roller Sleeve
11	79-60-0066-01	Main Shaft	70	79-21-0001-01	Roller Cup
12	79-03-0035-01	Bail Wire	71	79-08-0011-01	Bail Brake
13	79-40-0006-01	Pickup Nut	73	79-50-0044-01	Ratchet
14	79-72-0010-01	Pickup Washer	76	79-02-0026-01	Throwout Arm
15	Not Available	Pickup Housing	85	79-67-0090-01	Release Button Spring
16	79-58-0151-01	Bail Screw	88	79-12-0009-01	Crank Cap
17	79-58-0062-01	Trip Lever Screw	92	79-58-0143-01	Plate Screw
18	79-37-0049-01	Trip Lever	95	79-47-0134-01	Bail Spring Plate
19	79-67-0037-01	Trip Lever Spring	99	79-28-0022-01	Gear
22	79-57-0001-01	Line Roller	100	79-58-0071-01	Gear Screw
23	79-07-0033-01	Bail Bracket	106	79-47-0133-01	Trip Lever Plate
24	79-58-0151-01	Bail Bracket Screw	107	79-58-0143-01	Plate Screw
25	79-67-0049-01	Bail Spring	108	79-58-0074-01	Trip Spring Screw
29	79-58-0050-01	Roller Screw	112	79-11-0022-01	Silent Non-Reverse Cam
39	79-58-0168-01	Retainer Screw	123	79-60-0051-01	Drag Shaft
40	79-53-0036-01	Bearing Retainer	124	79-72-0269-01	Vinyl Washer
41	79-04-0003-01	Ball Bearing	125	79-72-0270-01	Latch Washer
42	79-46-0052-01	Pinion	126	79-72-0267-01	Fiber Washer
43	Not Available	Frame Assembly	127	79-72-0265-01	Metal Washer
44	79-58-0150-01	Cover Screw	128	79-72-0264-01	Nylon Washer
45	79-47-0161-01	Cover Plate	129	79-50-0003-01	Ratchet
46	79-75-0028-01	Yoke	130	79-58-0166-01	Drag Nut Screw
48	79-15-0014-01	Retainer Clip	131	79-37-0046-01	Lever
49	79-57-0008-01	Roller	132	79-58-0070-01	Lever Screw
50	79-28-0078-01	Drive Gear	135	79-67-0101-01	Drag Spring