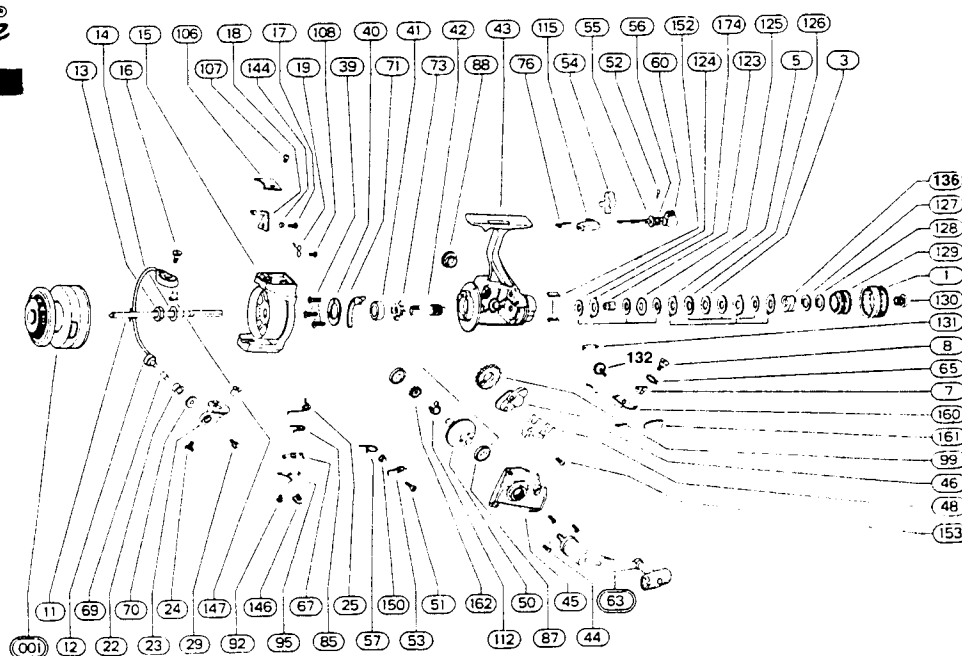


Shakespeare®



PART NO.	DESCRIPTION	PART NO.	DESCRIPTION
41/80-1	Drag Nut	41/80-67	Bail Fold Lever
41/80-3	Metal Washer	41/60-69	Line Roller Sleeve
41/80-5	Eared Washer	41/60-70	Line Roller Cup
41/80-7	Click Spring	41/80-71	Bail Brake
41/60-8	Click Screw	41/80-73	Ratchet
41/80-11	Main Shaft	41/60-76	Throwout Arm
41/80-12	Bail Wire	41/60-85	Release Button Spring
41/70-13	Pickup Nut	41/70-87	Ball Bearing
41/70-14	Pickup Washer	41/70-88	Crank Cap
41/80-15	Pickup Housing	41/80-92	Plate Screw (see 79-58-0279-01)
41/60-16	Bail Screw	41/80-95	Bail Spring Plate
41/80-17	Trip Lever Screw	41/80-99	Level Wind Gear
41/80-18	Trip Lever	41/80-106	Trip Lever Plate
41/80-19	Trip Lever Spring	41/80-107	Plate Screw (see 79-58-0274-01)
41/60-22	Line Roller	41/80-108	Trip Spring Screw (see 79-58-0278-01)
41/80-23	Bail Bracket	41/70-112	Silent N/R Cam
41/50-24	Bail Bracket Screw	41/70-115	Silent N/R Arm
41/80-25	Bail Spring	41/70-123	Drag Shaft
41/60-29	Roller Screw	41/80-124	Vinyl Washer
41/80-39	Retainer Screw (see 79-58-0277-01)	41/80-125	Latch Washer
41/80-40	Bearing Retainer	41/80-126	Rulon Washer
41/70-41	Ball Bearing	41/70-127	Metal Washer
41/80-42	Pinion	41/70-128	Nylon Washer
41/80-43	Frame Assembly	41/80-129	Drag Ratchet
41/50-44	Cover Screw	41/60-130	Drag Nut Screw
41/80-45	Cover Plate	41/70-131	Lever
41/80-46	Level Wind Yoke	41/80-132	Lever Pin
41/80-48	Retainer Clip	41/80-135	Drag Spring
41/80-50	Drive Gear	41/80-144	Trip Lever Bushing
41/80-51	N/R Pawl Screen	41/80-146	Bail Fold Button (see 79-10-0046-01)
41/80-52	Retainer Clip (see 79-15-0022-01)	41/80-147	Threaded Sleeve
41/80-53	Anti-Reverse Pawl	41/80-150	N/R Pawl Spacer
41/50-54	A/R Cam Spring	41/60-152	Housing Protector
41/50-55	A/R Cam	41/50-153	Level Wind Screw
41/50-56	A/R Cam Washer	41/60-160	Click
41/50-57	Non-Reverse Spring	41/60-161	Click Plate
41/80-60	Anti-Reverse Shaft (see 79-60-0068-01)	41/80-162	Gear
41/80-63	Crank Assembly	41/60-174	Eared Washer
41/80-65	Click Spring	41/80-001	Spool