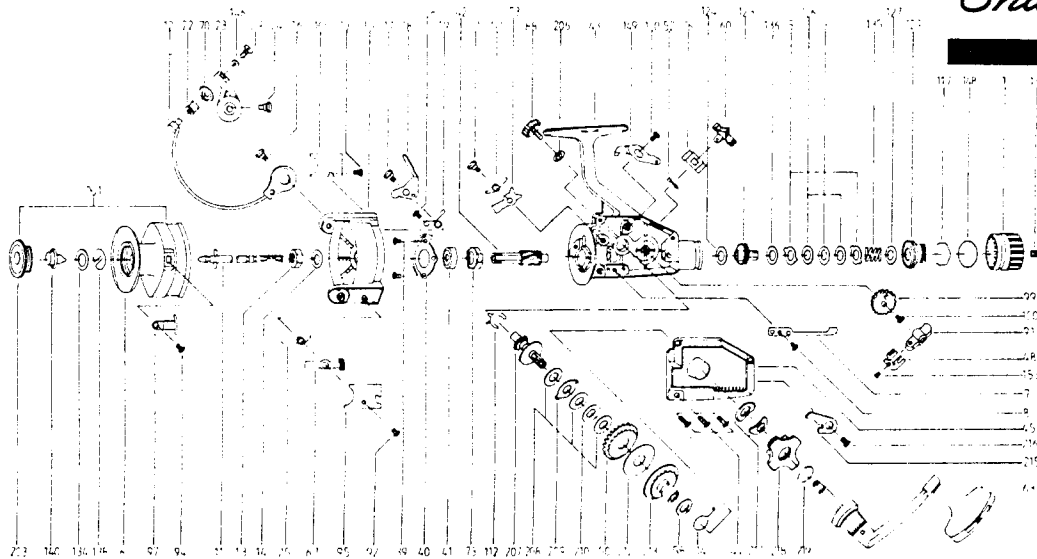


CANT TWIST 50/50

Shakespeare®



REF. NO.	PART NO.	DESCRIPTION	REF. NO.	PART NO.	DESCRIPTION
001	79-66-0180-01	Spool Assembly	91	79-37-0103-01	Oscillating Slider
1	79-40-0144-01	Rear Drag Cap Assembly	92	79-58-0488-01	Bail Spring Cover Screw
3	79-72-0389-01	Rear Drag Washer "D"	94	79-58-0318-01	Line Clip Screw
5	79-72-0385-01	Rear Drag Washer "A"	95	79-19-0032-01	Bail Spring Cover
6	79-66-0181-01	Spool	97	79-15-0027-01	Line Clip
7	79-67-0190-01	Click Pawl	99	79-28-0107-01	Oscillating Gear
8	79-58-0335-01	Click Pawl Screw	100	79-58-0444-01	Oscillating Gear Screw
11	79-60-0113-01	Main Shaft Assembly	106	79-19-0031-01	Kick Lever Cover
12	79-03-0077-01	Bail Arm Assembly	107	79-58-0323-01	Kick Lever Cover Screw
13	79-40-0118-01	Rotor Nut	108	79-58-0320-01	Kick Lever Spring Screw
14	79-72-0393-01	Rotor Retainer Washer	112	79-11-0044-01	Silent Cam (A/R)
15	79-34-0100-01	Pick Up Housing	117	79-54-0088-01	Rear Drag Ring
16	79-58-0465-01	Bail Holder Screw	123	79-33-0004-01	Slider Holder
17	79-58-0322-01	Kick Lever Screw	124	79-72-0521-01	Rear Drag Washer "C"
18	79-37-0091-01	Kick Lever	126	79-72-0387-01	Rear Drag Washer "B"
19	79-67-0182-01	Kick Lever Spring	127	79-72-0391-01	Rear Drag Adjustable Washer
22	79-57-0022-01	Line Roller	129	79-40-0116-01	Rear Drag Nut
23	79-37-0097-01	Arm Lever	130	79-58-0333-01	Rear Drag Cap Screw
24	79-58-0467-01	Arm Lever Screw	134	79-72-0379-01	Spool Plate Washer
25	79-67-0186-01	Bail Spring	135	79-67-0188-01	Rear Drag Coil Spring
29	79-58-0353-01	Bail Screw	136	79-72-0510-01	Rear Drag Washer "E"
39	79-58-0343-01	Bearing Plate Screw	138	79-67-0180-01	Spool Plate Spring
40	79-47-0219-01	Bearing Plate	140	79-10-0053-01	Push Button
41	79-04-0043-01	Ball Bearing	146	79-72-0381-01	Bail Washer
42	79-46-0075-01	Pinion	148	79-54-0090-01	O-Ring
43	79-27-0096-01	Body Assembly	149	79-11-0038-01	Anti-Reverse Lever Cam
44	79-58-0486-01	Body Cover Screw	150	79-58-0341-01	Anti-Reverse Lever Cam Screw
45	79-19-0019-01	Body Cover Assembly	153	79-58-0445-01	Oscillating Slider Stopper Screw
48	79-15-0029-01	Oscillating Slider Stopper	203	79-12-0036-01	Spool Cap
50	79-28-0137-01	Drive Gear	206	79-72-0479-01	Handle Screw Cap Washer
51	79-58-0338-01	Anti-Reverse Pawl Screw	207	79-60-0101-01	Drive Gear Shaft Assembly
52	79-45-0024-01	Anti-Reverse Lever Pin	208	79-72-0480-01	Drive Gear Washer "B"
53	79-43-0090-01	Anti-Reverse Pawl	209	79-72-0481-01	Drive Gear Washer "A"
57	79-67-0192-01	Anti-Reverse Pawl Spring	210	79-72-0482-01	Drive Gear Washer "D"
58	79-72-0395-01	Drive Gear Adjustable Washer	212	79-72-0483-01	Pressure Metal Washer
60	79-10-0068-01	Anti-Reverse Lever	213	79-72-0484-01	Pressure Metal Drag Washer
63	79-20-0116-01	Handle Assembly	214	79-67-0256-01	Pressure Sliding Spring
67	79-37-0104-01	Fold Bail	215	79-28-0128-01	Gear Stopper
70	79-17-0005-01	Bail Collar	216	79-58-0446-01	Gear Stopper Screw
73	79-28-0139-01	Ratchet Gear	217	79-72-0485-01	Side Drag Spring Washer
76	79-67-0194-01	Anti-Reverse Lever Plate Spring	218	79-79-0007-01	Side Drag Assembly
88	79-12-0026-01	Handle Screw Cap Assembly	219	79-54-0099-01	Gear Shaft Ring