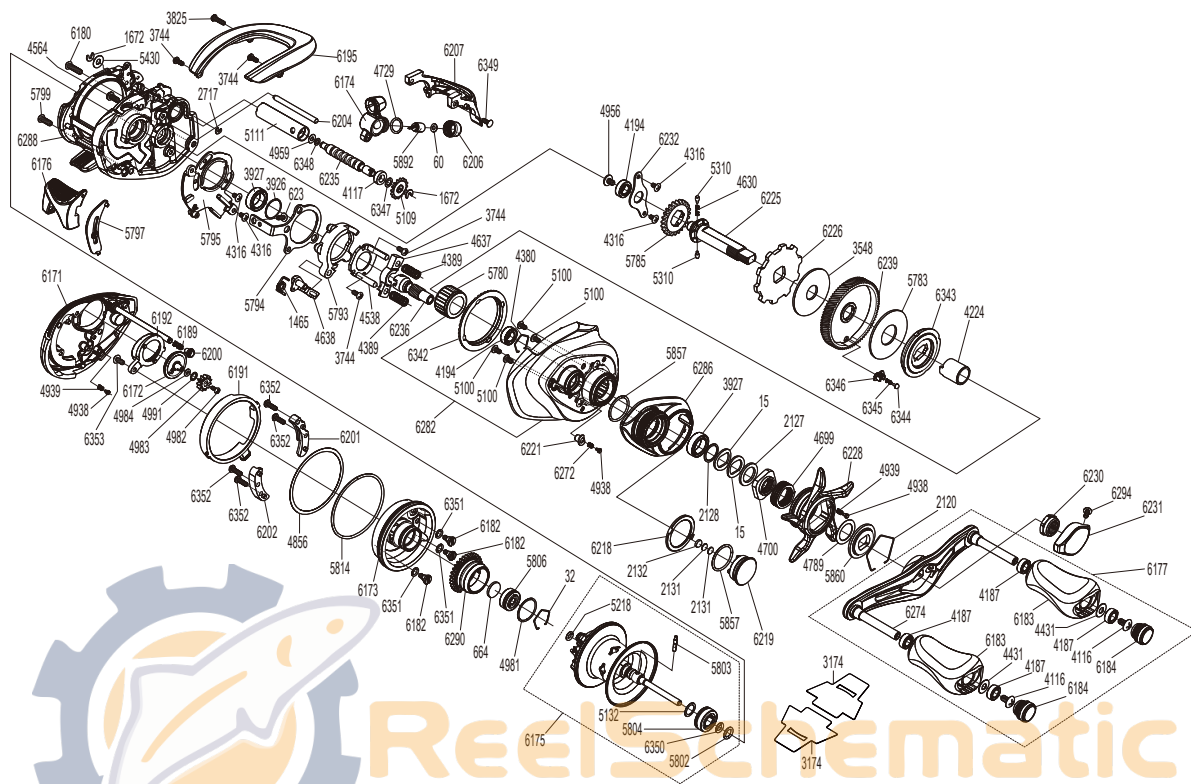


# SHIMANO

## ANTARES SA-RB

## ANT-HGR



Please note that the number of adjusting washers may not be the same as shown in the exploded views.  
(Adjustment will vary with each individual product.)

BNT5804 Bearing, BNT5803 Spool clutch pin, and BNT5780 Roller clutch cannot be replaced by the customer.  
To replace these parts, please request after-sales service.

(51RL17200X)

Part No.	Description	Part No.	Description	Part No.	Description
BNT0015	Washer	BNT4981	O Ring	BNT6192	Brake Retainer
BNT0032	Bearing Retainer	BNT4982	Screw	BNT6195	Thumb Rest
BNT0060	Spacer	BNT4983	Brake Dial Gear	BNT6200	Damper Guide
BNT0623	Screw	BNT4984	O Ring	BNT6201	Brake Case Cam
BNT0664	Spacer B	BNT4991	Washer	BNT6202	Brake Case Cam
BNT1465	Clutch Pawl Spring	BNT5100	Screw	BNT6204	Stabilizer Bar
BNT1672	E Lock	BNT5109	Idle Gear	BNT6206	Pawl Cap
BNT2120	Click Plate Retainer	BNT5111	Level Wind Guard	BNT6207	Level Wind Protector
BNT2127	Star Drag Spacer	BNT5132	Washer	BNT6218	Click Plate
BNT2128	Washer	BNT5218	O Ring	BNT6219	Cast Control Nut
BNT2131	Cast Control Spacer	BNT5310	Idle Gear Pin	BNT6221	Click Pin Holder
BNT2132	Cast Control Spacer	BNT5430	Washer	BNT6225	Drive Shaft
BNT2717	E Lock	BNT5780	Roller Clutch Bearing	BNT6226	Anti-Reverse Ratchet
BNT3548	Drag Washer	BNT5783	Drag Washer	BNT6228	Star Drag
BNT3744	Screw	BNT5785	Idle Gear	BNT6230	Handle Nut
BNT3825	Screw	BNT5793	Clutch Cam	BNT6231	Handle Nut Plate
BNT3926	Washer	BNT5794	Clutch Plate	BNT6232	Drive Shaft Retainer
BNT3927	Ball Bearing	BNT5795	Clutch Guard	BNT6235	Worm Shaft
BNT4116	Screw	BNT5797	Clutch Bar Guide	BNT6236	Pinion Gear
BNT4117	Bushing	BNT5799	Screw	BNT6239	Drive Gear
BNT4187	Ball Bearing	BNT5802	O Ring	BNT6272	Click Spring
BNT4194	Ball Bearing	BNT5803	Spool Clutch Pin	BNT6274	Handle Shank Assembly
BNT4224	Roller Clutch Inner Tube	BNT5804	Ball Bearing	BNT6282	Right Side Plate Assembly
BNT4316	Screw	BNT5806	Ball Bearing	BNT6286	Cast Control Cap Assembly
BNT4380	Retainer	BNT5814	O Ring	BNT6288	Frame Assembly
BNT4389	Yoke Spring	BNT5857	O Ring	BNT6290	Brake Pipe Gear Assembly
BNT4431	Washer	BNT5860	Star Drag Click Plate	BNT6294	Screw
BNT4538	Clutch Cam Retainer	BNT5892	Line Guide Pawl	BNT6342	Drag Click Ratchet
BNT4564	Screw	BNT6171	Left Side Plate Assembly	BNT6343	Key Washer
BNT4630	Idle Gear Spring	BNT6172	Brake Dial Assembly	BNT6344	Click Pin
BNT4637	Yoke	BNT6173	Dial Case Assembly	BNT6345	Click Spring
BNT4638	Clutch Pawl	BNT6174	Line Guide Pawl Holder Assembly	BNT6346	Drag Click Pin Holder
BNT4699	Star Drag Spring	BNT6175	Spool Assembly(With Bearing)	BNT6347	Washer
BNT4700	Star Drag Nut	BNT6176	Clutch Bar Assembly	BNT6348	Washer
BNT4729	O Ring	BNT6177	Handle Assembly	BNT6349	Screw
BNT4789	Washer	BNT6180	Screw	BNT6350	O Ring
BNT4856	Washer	BNT6182	Screw	BNT6351	O Ring
BNT4938	Click Pin	BNT6183	Handle Knob	BNT6352	Screw
BNT4939	Click Spring	BNT6184	Handle Knob Seal	BNT6353	Screw
BNT4956	Screw	BNT6189	Damper Spring		
BNT4959	Washer	BNT6191	Left Side Plate Cam Lever	BNT3174	Reel Seat Spacer (accessory)