

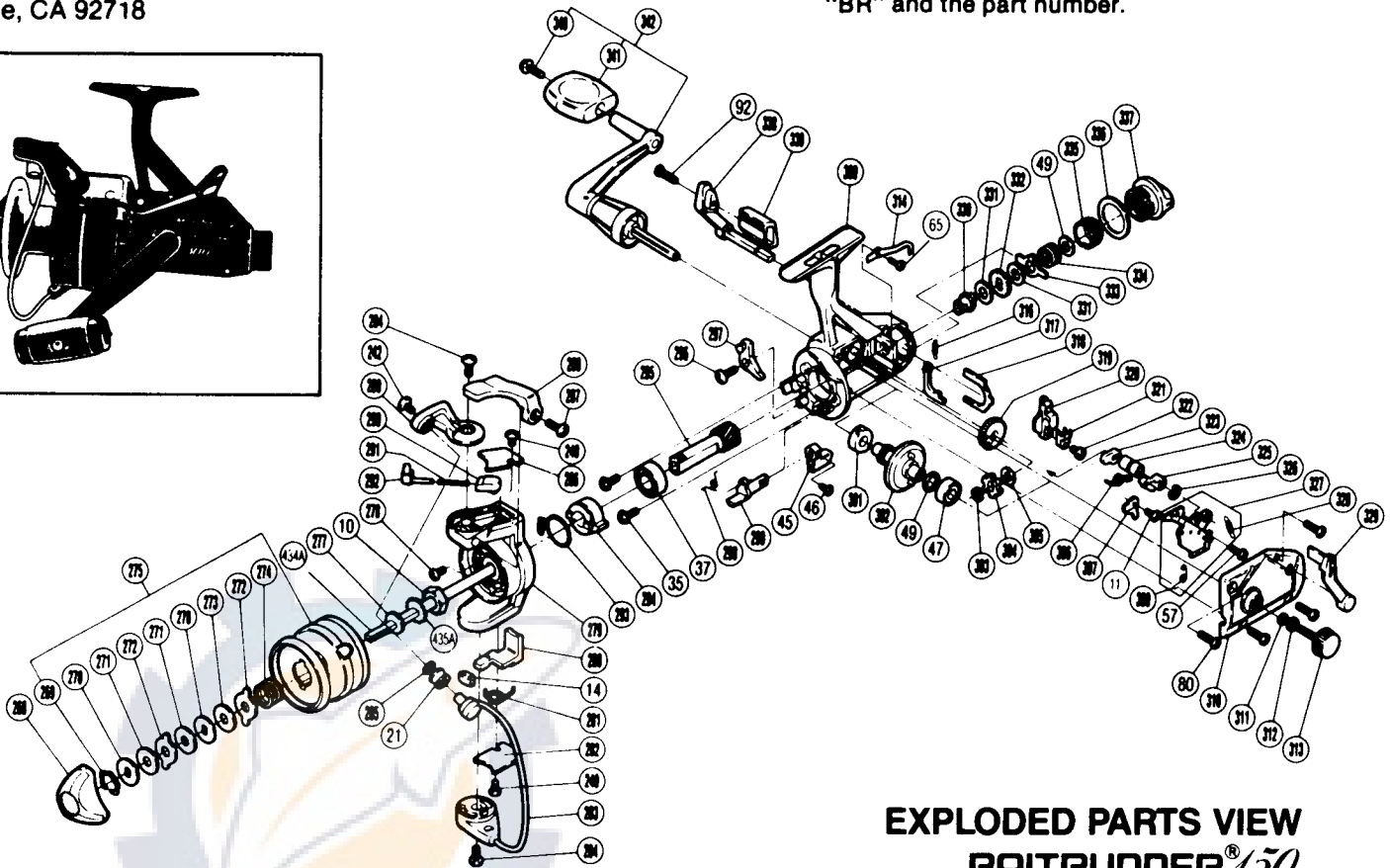
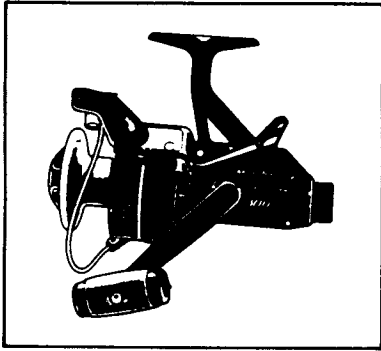
# SHIMANO®

## 1987 REPAIR MANUAL

Shimano American Corporation, One Shimano Dr.  
Irvine, CA 92718

### TO ORDER:

This reel belongs to the "BaitRunner" series.  
Please order parts using the abbreviation  
"BR" and the part number.



### PARTS LIST

### EXPLODED PARTS VIEW BAITRUNNER® 150

#### PART # DESCRIPTION

10.	Rotor Nut
11.	Multipurpose Screw
14.	Bail Trip Slide Cam
21.	Line Roller
35.	Bearing Retainer Screw
37.	Ball Bearing
45.	Anti-Reverse Lever
46.	Anti-Reverse Lever Screw
47.	Ball Bearing
49.	Drive Gear Washer
57.	Clutch Plate Screw
65.	Dial Click Screw
80.	Side Cover Screw B
92.	Baitrunner Lever Screw
240.	Bail Trip Cover Screw
242.	Line Roller Screw
268.	Drag Knob
269.	Drag Washers Retainer
270.	Key Washer
271.	Drag Washer 1
272.	Spool Washer
273.	Drag Washer 2
274.	Drag Spring
275.	Spool Assembly
277.	Spool Washer
278.	Nut Lock Screw
279.	Rotor
280.	Bail Trip Lever
281.	Lever Spring
282.	Bail Trip Cover

#### PART # DESCRIPTION

283.	Bail Assembly
284.	Bail Trip Cam Screw
285.	Line Roller Washer
286.	Bail Spring Cover
287.	Trigger Screw
288.	Quick-Fire II Trigger
289.	Bail Arm
290.	Bail Spring Guide B
291.	Bail Spring
292.	Bail Spring Guide A
293.	Anti-Reverse Pawl Spring
294.	Anti-Reverse Ratchet
295.	Pinion Gear
296.	Anti-Reverse Pawl Screw
297.	Anti-Reverse Pawl
298.	Anti-Reverse Cam Spring
299.	Anti-Reverse Cam
300.	Body
301.	Bushing
302.	Drive Gear
303.	"C" Lock
304.	Baitrunner Ratchet
305.	Ratchet Spacer
306.	Clutch Spring
307.	Baitrunner Pawl Guide
309.	Clutch Pawl Spring
310.	Side Cover
311.	Lock Washer Retainer
312.	Handle Lock Washer
313.	Handle Screw Cap

#### PART # DESCRIPTION

314.	Dial Click
316.	Baitrunner Pawl Spring
317.	Baitrunner Pawl
318.	Dial Retainer
319.	Oscillating Gear
320.	Oscillating Slider
321.	Oscillating Slider Retainer
322.	Slider Retainer Screw
323.	Clutch Cam
324.	Clutch Cam Spacer
325.	Clutch Arm
326.	Lever Shaft Retainer
327.	Clutch Plate Assembly
328.	Baitrunner Click Spring
329.	Baitrunner Lever Arm (L)
330.	Free Spool Tension Shaft
331.	Free Spool Tension Washer
332.	Click Gear
333.	Eared Washer "BFS"
334.	Free Spool Tension Spring
335.	Free Spool Tension Screw
336.	Dial Spacer
337.	Baitrunner Tension Dial
338.	Baitrunner Lever Arm (R)
339.	Baitrunner Lever Bridge
340.	Handle Knob Screw
341.	Handle Knob
342.	Handle Assembly
434A.	Main Shaft
435A.	Spool Support

Prices and specifications subject to change without notice.

JUNE 1986