

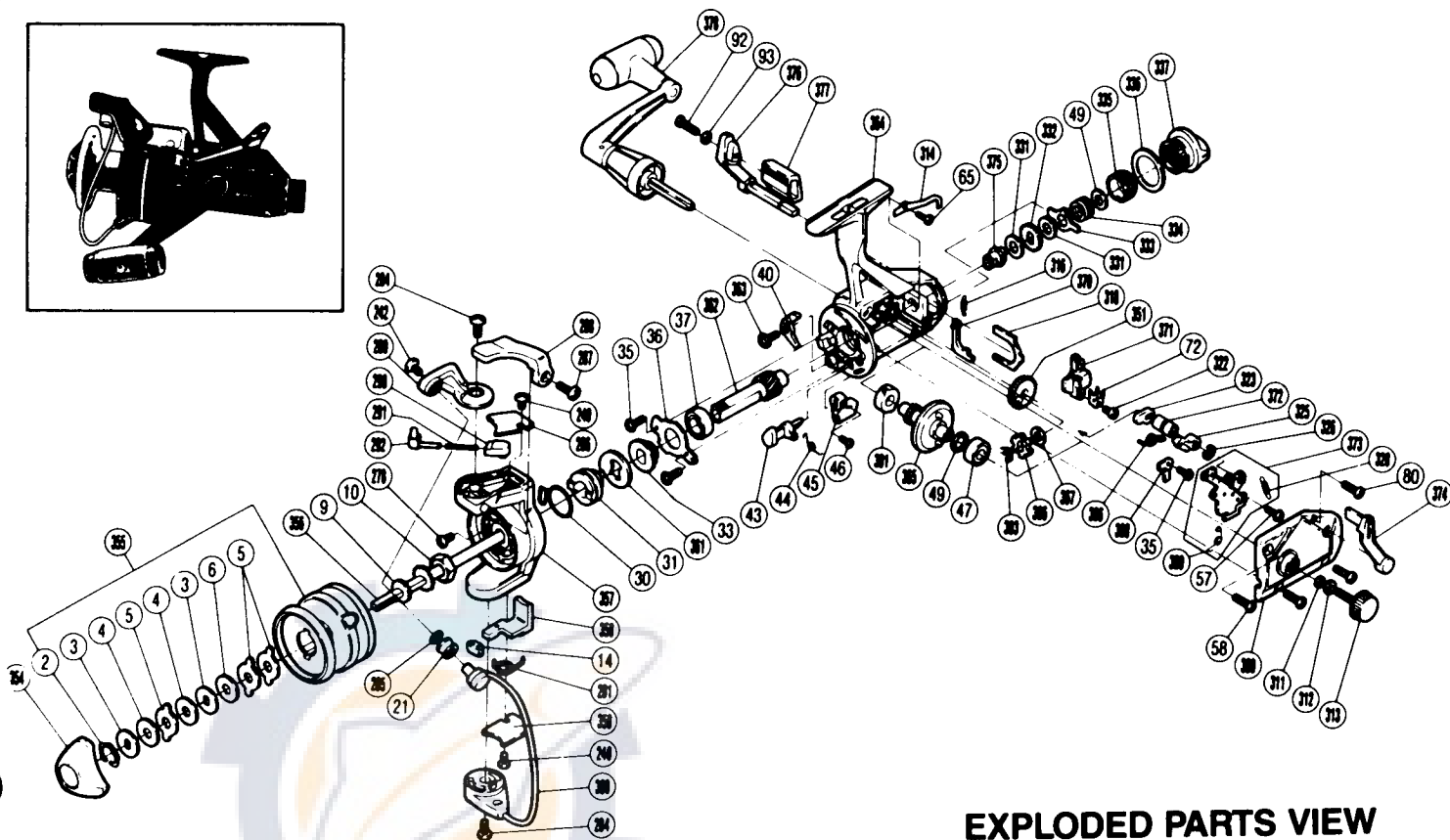
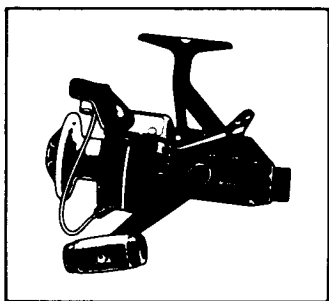
SHIMANO®

1987 REPAIR MANUAL

Shimano American Corporation, One Shimano Dr.
Irvine, CA 92718

TO ORDER:

This reel belongs to the "BaitRunner" series.
Please order parts using the abbreviation
"BR" and the part number.



PARTS LIST

EXPLODED PARTS VIEW BAITRUNNER®300

PART # DESCRIPTION

- 2. Drag Washers Retainer
- 3. Key Washer
- 4. Drag Washer 1
- 5. Eared Washer
- 6. Drag Washer 2
- 9. Spool Washer
- 10. Rotor Nut
- 14. Bail Trip Slide Cam
- 21. Line Roller
- 30. Anti-Reverse Pawl Spring
- 31. Anti-Reverse Spring Holder
- 33. Pinion Spacer
- 35. Bearing Retainer Screw
- 36. Bearing Retainer
- 37. Ball Bearing
- 40. Anti-Reverse Pawl
- 43. Anti-Reverse Cam
- 44. Anti-Reverse Cam Spring
- 45. Anti-Reverse Lever
- 46. Anti-Reverse Lever Screw
- 47. Ball Bearing
- 49. Drive Gear Washer
- 57. Clutch Plate Screw
- 58. Side Cover Screw A
- 65. Dial Click Screw
- 72. Oscillating Slider Retainer
- 80. Side Cover Screw B
- 92. Baitrunner Lever Screw
- 93. Lock Washer
- 240. Bail Trip Cover Screw

PART # DESCRIPTION

- 242. Line Roller Screw
- 278. Nut Lock Screw
- 281. Lever Spring
- 284. Bail Trip Cam Screw
- 285. Line Roller Washer
- 286. Bail Spring Cover
- 287. Trigger Screw
- 288. Quick-Fire II Trigger
- 289. Bail Arm
- 290. Bail Spring Guide B
- 291. Bail Spring
- 292. Bail Spring Guide A
- 301. Bushing
- 303. "C" Lock
- 306. Clutch Spring
- 309. Clutch Pawl Spring
- 311. Lock Washer Retainer
- 312. Handle Lock Washer
- 313. Handle Screw Cap
- 314. Dial Click
- 316. Baitrunner Pawl Spring
- 318. Dial Retainer
- 322. Slider Retainer Screw
- 323. Clutch Cam
- 325. Clutch Arm
- 326. Lever Shaft Retainer
- 328. Baitrunner Click Spring
- 331. Free Spool Tension Washer
- 332. Click Gear
- 333. Eared Washer "BFS"

PART # DESCRIPTION

- 334. Free Spool Tension Spring
- 335. Free Spool Tension Screw
- 336. Dial Spacer
- 337. Baitrunner Tension Dial
- 351. Oscillating Gear
- 354. Drag Knob
- 355. Spool Assembly
- 356. Main Shaft
- 357. Rotor
- 358. Bail Trip Lever
- 359. Bail Trip Cover
- 360. Ball Assembly
- 361. Anti-Reverse Ratchet
- 362. Pinion Gear
- 363. Anti-Reverse Pawl Screw
- 364. Body
- 365. Drive Gear
- 366. Baitrunner Ratchet
- 367. Ratchet Spacer
- 368. Baitrunner Pawl Guide
- 369. Side Cover
- 370. Baitrunner Pawl
- 371. Oscillating Slider
- 372. Clutch Cam Spacer
- 373. Clutch Plate Assembly
- 374. Baitrunner Lever Arm (L)
- 375. Free Spool Tension Shaft
- 376. Baitrunner Lever Arm (R)
- 377. Baitrunner Lever Bridge
- 378. Handle Assembly

Prices and specifications subject to change without notice.

JUNE 1986