

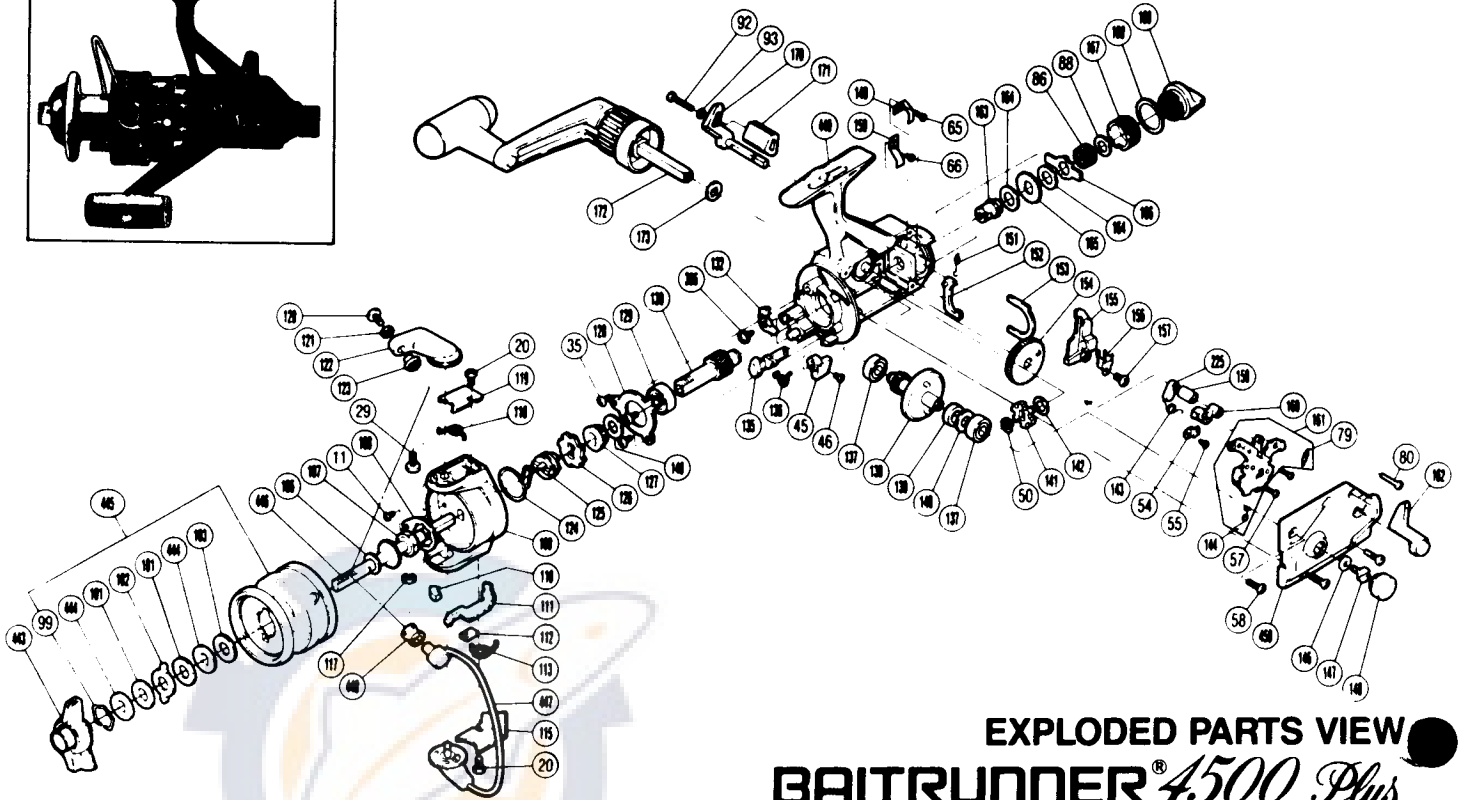
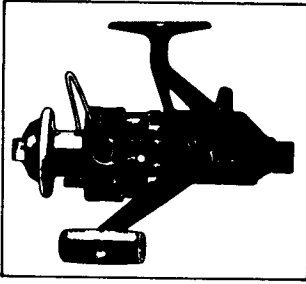
SHIMANO®

1987 REPAIR MANUAL

Shimano American Corporation, One Shimano Dr.
Irvine, CA 92718

TO ORDER:

This reel belongs to the "BaitRunner" series.
Please order parts using the abbreviation
"BR" and the part number.



EXPLODED PARTS VIEW BAITRUNNER® 4500 Plus

PARTS LIST

PART #	DESCRIPTION	PART #	DESCRIPTION	PART #	DESCRIPTION
11.	Nut Lock Screw	117.	"E" Lock	152.	Baitrunner Pawl
20.	Bail Trip Cover Screw	118.	Bail Spring	153.	Dial Retainer
29.	Bail Arm Screw	119.	Bail Spring Cover	154.	Oscillating Gear
35.	Bearing Retainer Screw	120.	Line Roller Screw	155.	Oscillating Slider
45.	Anti-Reverse Lever	121.	Lock Washer	156.	Oscillating Slider Retainer
46.	Anti-Reverse Lever Screw	122.	Bail Arm	157.	Slider Retainer Screw
50.	"C" Lock	123.	Line Roller Washer	159.	Clutch Cam Spacer
54.	Lever Shaft Retainer	124.	Anti-Reverse Pawl Spring	160.	Clutch Arm
55.	Shaft Retainer Screw	125.	Anti-Reverse Spring Holder	161.	Clutch Plate Assembly
57.	Clutch Plate Screw	126.	Anti-Reverse Ratchet	162.	Baitrunner Lever Arm (L)
58.	Side Cover Screw A	127.	Pinion Spacer	163.	Free Spool Tension Shaft
65.	Dial Click Screw	128.	Bearing Retainer	164.	Free Spool Tension Washer
66.	Pawl Guide Screw	129.	Ball Bearing	165.	Click Gear
79.	Baitrunner Click Spring	130.	Pinion Gear	166.	Eared Washer "BFS"
80.	Side Cover Screw B	132.	Anti-Reverse Pawl	167.	Free Spool Tension Screw
86.	Free Spool Tension Spring	135.	Anti-Reverse Cam	168.	Dial Spacer
88.	Tension Spring Washer "B"	136.	Anti-Reverse Cam Spring	169.	Baitrunner Tension Dial
92.	Baitrunner Lever Screw	137.	Ball Bearing	170.	Baitrunner Lever Arm (R)
93.	Lock Washer	138.	Drive Gear	171.	Baitrunner Lever Bridge
99.	Drag Washers Retainer	139.	Drive Gear Spacer	172.	Handle Assembly
101.	Drag Washer 1	140.	Drive Gear Washer	173.	Handle Lock Spacer
102.	Eared Washer	141.	Baitrunner Ratchet	225.	Clutch Cam
103.	Drag Washer 2	142.	Ratchet Spacer	386.	Anti-Reverse Pawl Screw
106.	Spool Washer	143.	Clutch Spring	443.	Fightin' Drag Knob
107.	Rotor Nut	144.	Clutch Pawl Spring	444.	Key Washer
108.	Rotor Nut Lock Plate	146.	Handle Lock Washer	445.	Spool Assembly
109.	Rotor	147.	Handle Lock Screw	446.	Main Shaft
110.	Bail Trip Side Cam	148.	Handle Screw Cap	447.	Bail Assembly
111.	Bail Trip Lever	149.	Dial Click	448.	Sic Ceramic Roller
112.	Trip Lever Guide	150.	Baitrunner Pawl Guide	449.	Body
113.	Lever Spring	151.	Baitrunner Pawl Spring	450.	Side Cover

Prices and specifications subject to change without notice.

JUNE 1986