

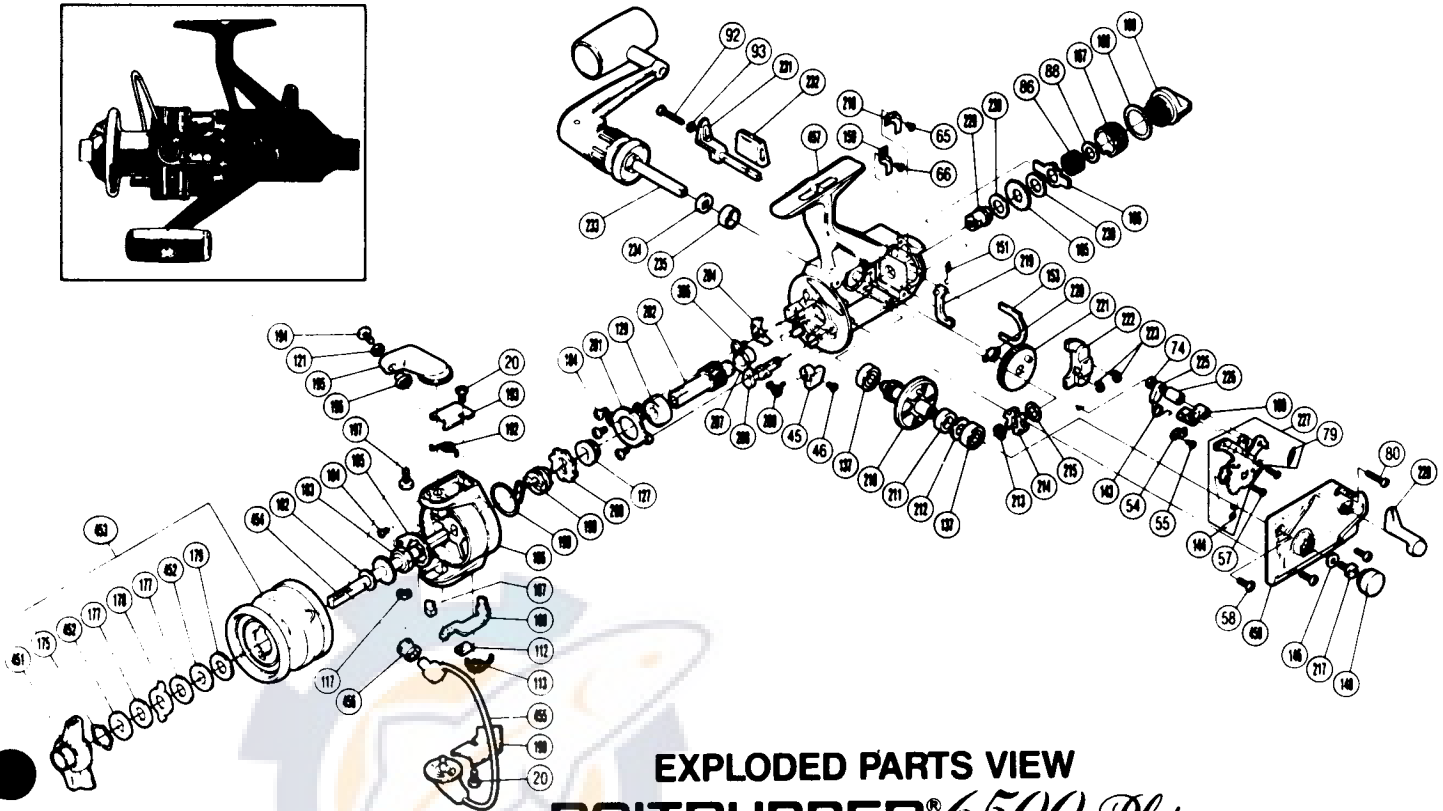
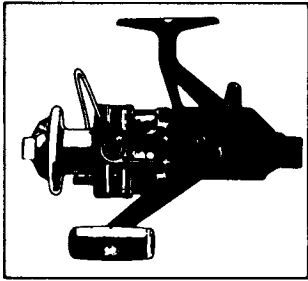
# SHIMANO®

## 1987 REPAIR MANUAL

Shimano American Corporation, One Shimano Dr.  
Irvine, CA 92718

### TO ORDER:

This reel belongs to the "BaitRunner" series.  
Please order parts using the abbreviation  
"BR" and the part number.



## EXPLODED PARTS VIEW BAITRUNNER® 6.500 Plus

### PARTS LIST

PART #	DESCRIPTION	PART #	DESCRIPTION	PART #	DESCRIPTION
20.	Bail Trip Cover Screw	166.	Eared Washer "BFS"	211.	Drive Gear Spacer
45.	Anti-Reverse Lever	167.	Free Spool Tension Screw	212.	Drive Gear Washer
46.	Anti-Reverse Lever Screw	168.	Dial Spacer	213.	"C" Lock
54.	Lever Shaft Retainer	169.	Baitrunner Tension Dial	214.	Baitrunner Ratchet
55.	Shaft Retainer Screw	175.	Drag Washers Retainer	215.	Ratchet Spacer
57.	Clutch Plate Screw	177.	Drag Washer 1	217.	Handle Lock Screw
58.	Side Cover Screw A	178.	Eared Washer	218.	Dial Click
65.	Dial Click Screw	179.	Drag Washer 2	219.	Baitrunner Pawl
66.	Pawl Guide Screw	182.	Spool Washer	220.	Oscillating Gear Bushing
74.	Clutch Cam Spacer B	183.	Rotor Nut	221.	Oscillating Gear
79.	Baitrunner Click Spring	184.	Multi Purpose Screw	222.	Oscillating Slider
80.	Side Cover Screw B	185.	Rotor Nut Lock Plate	223.	"C" Lock
86.	Free Spool Tension Spring	186.	Rotor	225.	Clutch Cam
88.	Tension Spring Washer "B"	187.	Bail Trip Slide Cam	226.	Clutch Cam Spacer A
92.	Baitrunner Lever Screw	188.	Bail Trip Lever	227.	Clutch Plate Assembly
93.	Lock Washer	190.	Bail Trip Cover	228.	Baitrunner Lever Arm (L)
112.	Trip Lever Guide	192.	Bail Spring	229.	Free Spool Tension Shaft
113.	Lever Spring	193.	Bail Spring Cover	230.	Free Spool Tension Washer
117.	"E" Lock	194.	Line Roller Screw	231.	Baitrunner Lever Arm (R)
121.	Lock Washer	195.	Bail Arm	232.	Baitrunner Lever Bridge
127.	Pinion Spacer	196.	Line Roller Washer	233.	Handle Assembly
129.	Ball Bearing	197.	Bail Arm Screw	234.	Handle Lock Spacer
137.	Ball Bearing	198.	Anti-Reverse Pawl Spring	235.	Handle Lock Ring
143.	Clutch Spring	199.	Anti-Reverse Spring Holder	386.	Anti-Reverse Pawl Screw
144.	Clutch Pawl Spring	200.	Anti-Reverse Ratchet	451.	Fightin' Drag Knob
146.	Handle Lock Washer	201.	Bearing Retainer	452.	Key Washer
148.	Handle Screw Cap	202.	Pinion Gear	453.	Spool Assembly
150.	Baitrunner Pawl Guide	204.	Anti-Reverse Pawl	454.	Main Shaft
151.	Baitrunner Pawl Spring	207.	Pinion Gear Bushing	455.	Ball Assembly
153.	Dial Retainer	208.	Anti-Reverse Cam	456.	Sic Ceramic Roller
160.	Clutch Arm	209.	Anti-Reverse Cam Spring	457.	Body
165.	Click Gear	210.	Drive Gear	458.	Side Cover

Prices and specifications subject to change without notice.

JUNE 1986