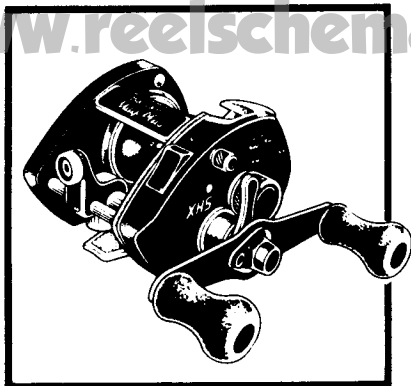
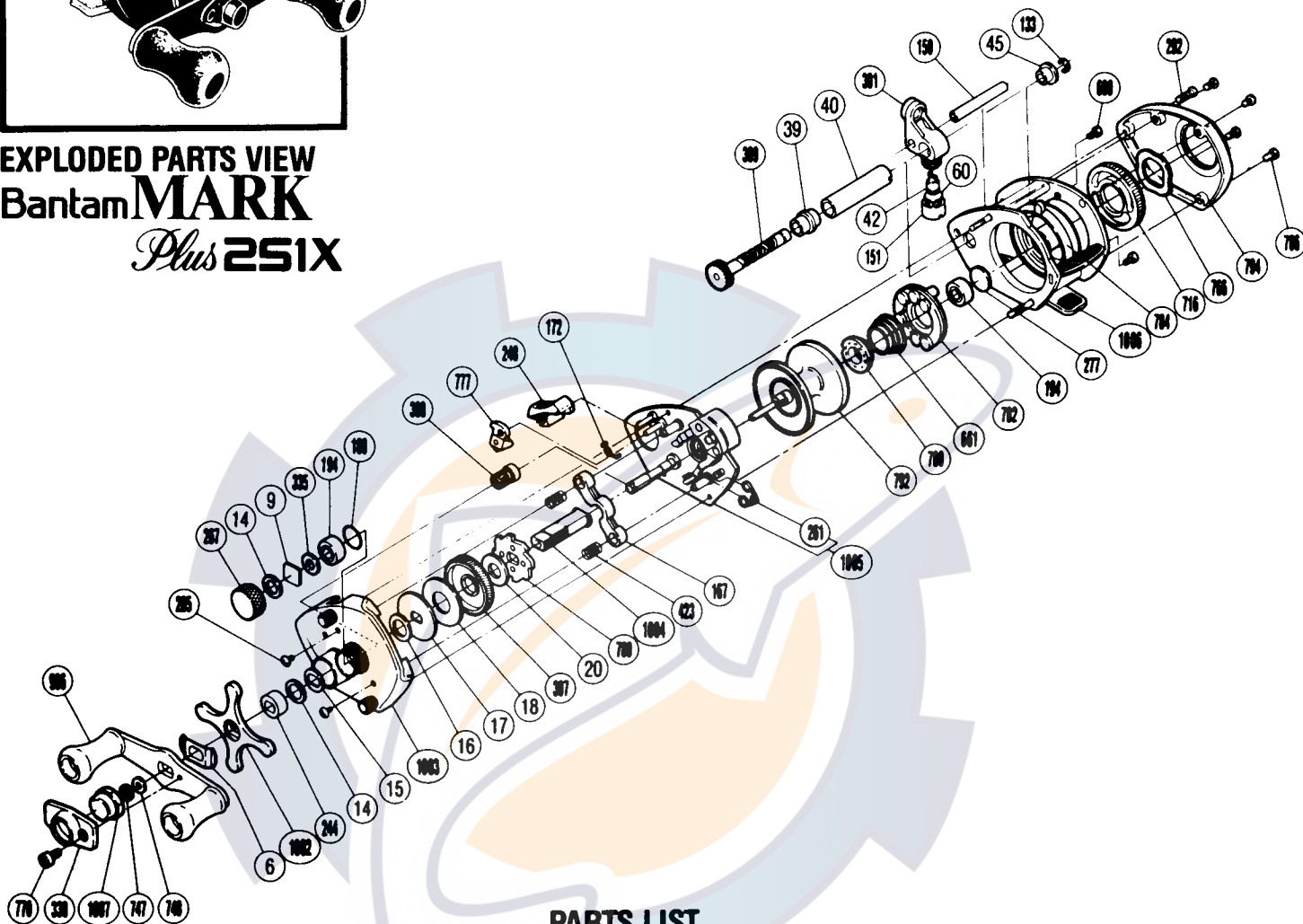


**1989 REPAIR MANUAL**Shimano American Corporation, One Shimano Dr.  
Irvine, CA 92718
**EXPLODED PARTS VIEW**  
**Bantam MARK**  
*Plus 251X*
**PARTS LIST****PART # DESCRIPTION**

BNT 0006	Friction Washer (A)
BNT 0009	Spacer (A)
BNT 0014	Friction Washer (B)
BNT 0015	Drag Spring Washer
BNT 0016	Friction Washer (C)
BNT 0017	Key Washer
BNT 0018	Drag Washer
BNT 0020	Drive Shaft Washer (B)
BNT 0039	Worm Bearing (A)
BNT 0040	Level Wind Guard
BNT 0042	Line Guide Pawl
BNT 0045	Worm Bearing (B)
BNT 0060	Spacer (Optional)
BNT 0133	Worm Shaft Retainer
BNT 0150	(Line Guide) Stabilizer Bar
BNT 0151	Pawl Cap
BNT 0167	(Pinion) Yoke
BNT 0172	(Anti-Reverse) Switch Spring
BNT 0188	O Ring

**PART # DESCRIPTION**

BNT 0194	Ball Bearing
BNT 0244	Bushing (B)
BNT 0248	Anti-Reverse Switch
BNT 0261	Retractor Spring
BNT 0267	Cast Control Cap
BNT 0277	Spacer (B)
BNT 0285	Set Plate Screw
BNT 0292	Stabilizer Bar Screw (B)
BNT 0301	Line Guide
BNT 0307	Drive Gear
BNT 0308	Pinion Gear (Assembly)
BNT 0309	Worm Shaft Assembly
BNT 0330	Handle Nut (Lock) Plate
BNT 0335	Bearing Washer (A)
BNT 0423	Yoke Spring
BNT 0609	Drive Shaft Retainer Screw
BNT 0661	Magnet Retainer Spring
BNT 0716	Magnet Control Dial
BNT 0747	Drive Shaft Retainer

**PART # DESCRIPTION**

BNT 0748	Drive Shaft Washer "A"
BNT 0766	Dial Friction Washer
BNT 0770	Handle Nut Plate Screw
BNT 0777	Anti-Reverse Pawl
BNT 0780	Magnet Retainer Lock
BNT 0782	Magnet Retainer
BNT 0784	Magnet Retainer Case
BNT 0786	Left Side Plate Screw
BNT 0789	Anti-Reverse Ratchet
BNT 0792	Spool
BNT 0794	Right Side Plate
BNT 0996	Handle Assembly
BNT 1002	Star Drag
BNT 1003	Left Side Plate
BNT 1004	Drive Shaft
BNT 1005	Set Plate Assembly
BNT 1006	Frame
BNT 1007	Handle Nut