

SHIMANO[®]

1989 REPAIR MANUAL

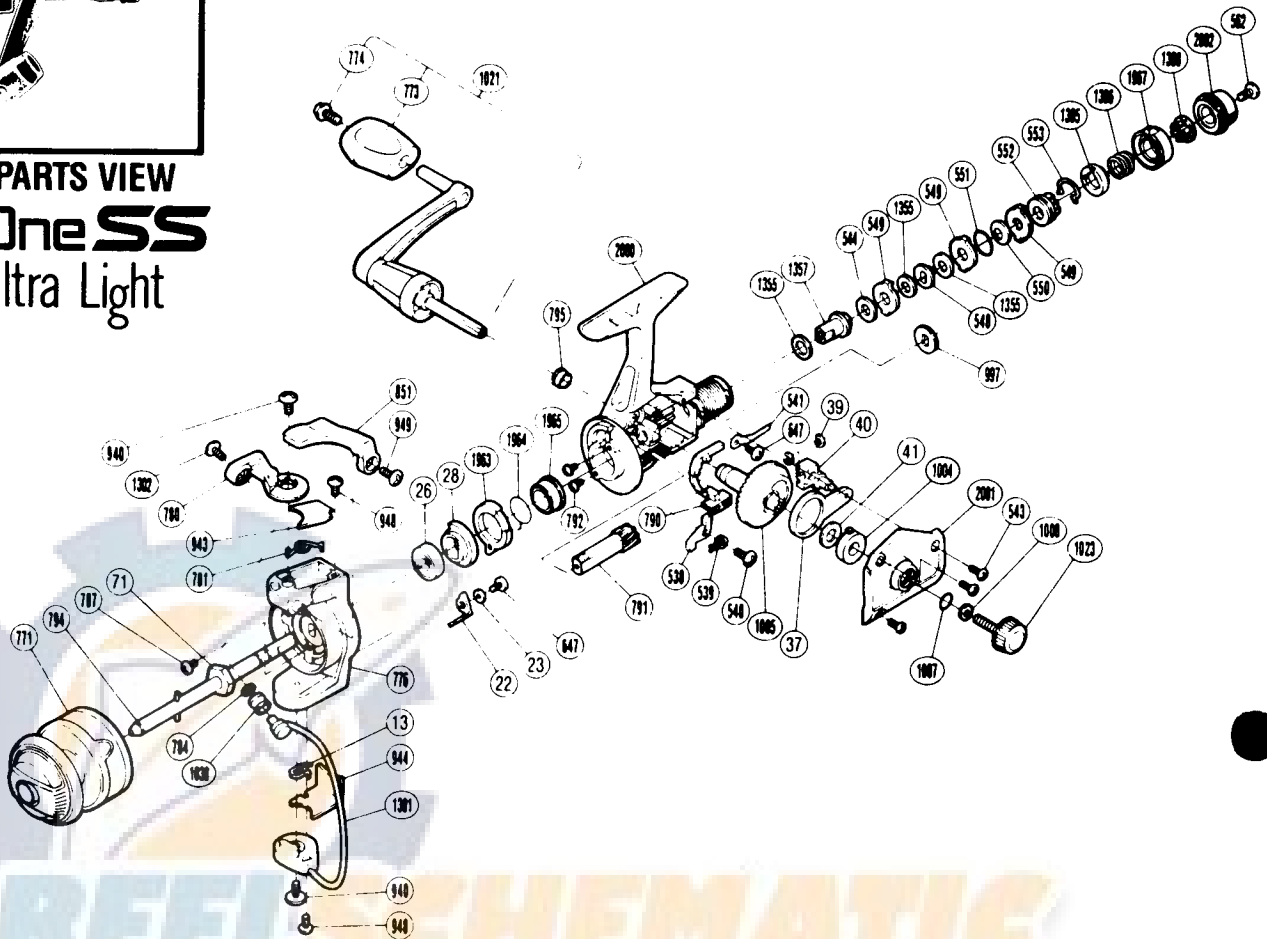
Shimano American Corporation, One Shimano Dr.
Irvine, CA 92718



EXPLODED PARTS VIEW

Bass One SS

Ultra Light



PARTS LIST

PART #	DESCRIPTION	PART #	DESCRIPTION	PART #	DESCRIPTION
RD 0013	(Trip) Lever Spring	RD 0562	Drag Programmer Screw	RD 1004	Bushing A
RD 0022	(Bail) Trip Lever	RD 0647	Nut Lock Screw	RD 1005	Drive Gear
RD 0023	Trip Lever Spacer	RD 0771	Spool Assembly	RD 1007	Lock Washer Retainer
RD 0026	Ball Bearing	RD 0773	Handle Knob	RD 1008	Handle Lock Washer
RD 0028	Anti-Reverse Ratchet	RD 0774	Handle Knob Screw	RD 1021	Handle Assembly
RD 0037	Oscillating Arm	RD 0776	Rotor	RD 1023	Handle Screw Cap
RD 0039	"C" Lock	RD 0780	Bail Arm	RD 1038	Sic Ceramic Roller
RD 0040	Oscillating Block	RD 0781	Bail Spring	RD 1301	Bail Assembly
RD 0041	Drive Gear Washer	RD 0784	Line Roller Washer	RD 1302	Line Roller Screw
RD 0071	Rotor Nut	RD 0787	Nut Lock Screw	RD 1305	Pre-Set Spring Cover
RD 0538	Anti-Reverse Pawl	RD 0790	Anti-Reverse Switch (Black)	RD 1306	Pre-Set Spring
RD 0539	Anti-Reverse Pawl Spring	RD 0791	Pinion Gear	RD 1308	Pre-Set Cam
RD 0540	Anti-Reverse Pawl Screw	RD 0792	Bearing Retainer Screw	RD 1355	Drag Washer "C1"
RD 0541	Drag Click	RD 0794	Main Shaft	RD 1357	Drag Shaft
RD 0543	Side Cover Screw (B)	RD 0795	Bushing B	RD 1963	Anti-Reverse Lock Out
RD 0544	Drag Washer "C2" (White)	RD 0851	Quick-Fire II Trigger	RD 1964	Anti-Reverse Lock Out Spring
RD 0548	Key Washer "A"	RD 0940	Bail Trip Cam Screw	RD 1965	Pinion Spacer
RD 0549	Eared Washer "B"	RD 0943	Bail Spring Cover	RD 1967	Pre-Set Ring
RD 0550	Coned Disc Spring	RD 0944	Bail Trip Cover	RD 2000	Body
RD 0551	"O" Ring	RD 0948	Bail Trip Cover Screw	RD 2001	Side Cover
RD 0552	Pressure Screw	RD 0949	Trigger Screw	RD 2002	Drag Knob
RD 0553	Hold Click Spring	RD 0997	Click Gear		