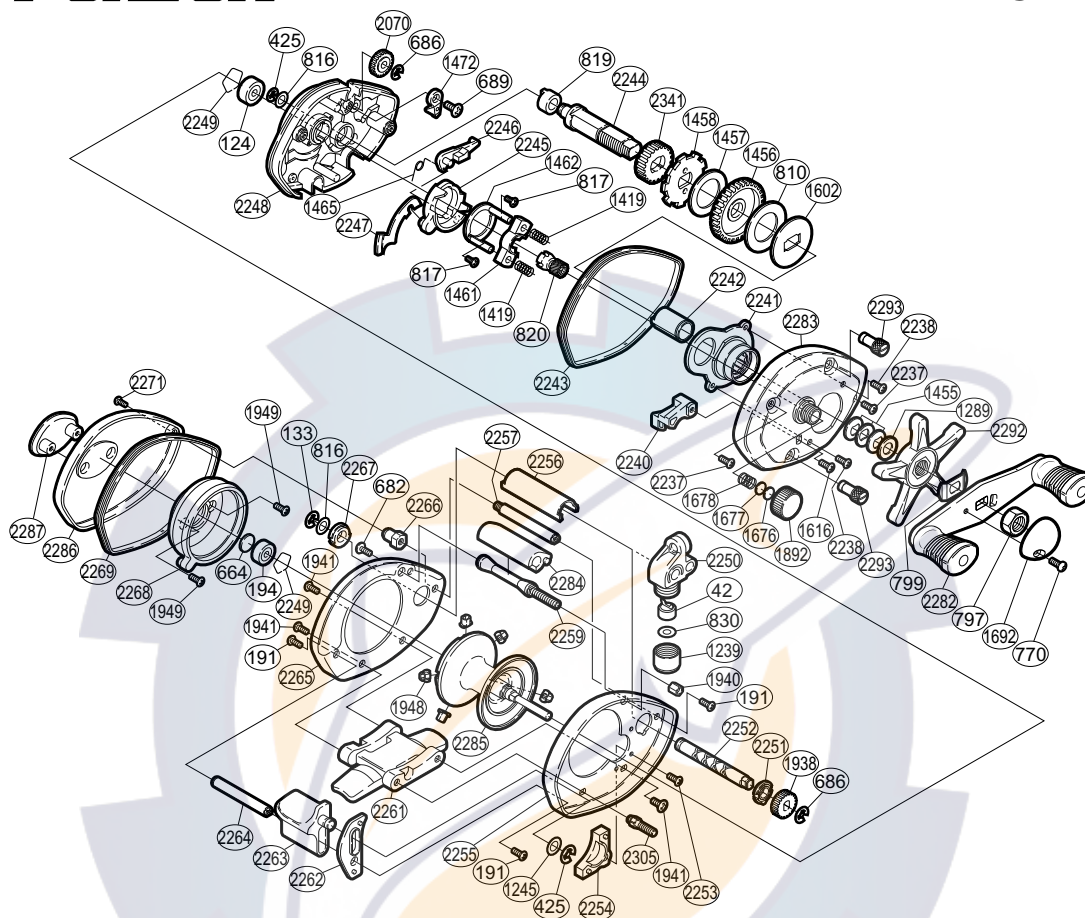


SHIMANO®

Cruzar®

CRZ-100



| Part No. | Description | Part No. | Description | Part No. | Description |
|----------|---------------------------|----------|--------------------------|----------|-----------------------------|
| BNT0042 | Line Guide Pawl | BNT1465 | Clutch Pawl Spring | BNT2252 | Worm Shaft |
| BNT0124 | Ball Bearing | BNT1472 | Anti-Reverse Pawl | BNT2253 | Drive Shaft Cover Screw |
| BNT0133 | Worm Shaft Retainer | BNT1602 | Key Washer | BNT2254 | Drive Shaft Cover |
| BNT0191 | Multi-Purpose Screw | BNT1616 | Return Pin Guide Screw | BNT2255 | A-Side Frame |
| BNT0194 | Ball Bearing | BNT1676 | Spool Tension Spacer (B) | BNT2256 | Level Wind Guard |
| BNT0425 | "E" Lock | BNT1677 | Spool Tension Spacer (A) | BNT2257 | Stabilizer Bar |
| BNT0664 | Spacer (B) | BNT1678 | Spool Tension Spring | BNT2259 | Frame Bar (A) |
| BNT0682 | Frame Bar (A) Screw | BNT1692 | Handle Nut Plate | BNT2261 | Stand |
| BNT0686 | "E" Lock | BNT1892 | Cast Control Cap | BNT2262 | Clutch Button Guide |
| BNT0689 | Anti-Reverse Pawl Screw | BNT1938 | Idle Gear (C) | BNT2263 | Quick-Fire II Clutch Button |
| BNT0770 | Handle Nut Plate Screw | BNT1940 | Frame Nut | BNT2264 | Clutch Button Support Bar |
| BNT0797 | Handle Nut | BNT1941 | Stand Screw | BNT2265 | B-Side Frame |
| BNT0799 | Friction Washer | BNT1948 | Brake Collar | BNT2266 | B-Side Frame Nut |
| BNT0810 | Drag Washer | BNT1949 | I.D.Plate Screw | BNT2267 | Worm Bushing (B) |
| BNT0816 | Shaft Washer | BNT2070 | Idle Gear (B) | BNT2268 | Brake Case |
| BNT0817 | Clutch Cam Retainer Screw | BNT2237 | Right Side Plate Screw | BNT2269 | B-Side Seal |
| BNT0819 | Drive Shaft Bushing | BNT2238 | Bush Plate Screw | BNT2271 | Left Side Plate Screw |
| BNT0820 | Pinion Gear | BNT2240 | Return Pin Guide | BNT2282 | Handle Assembly |
| BNT0830 | Spacer (optional) | BNT2241 | Roller Clutch Assembly | BNT2283 | Right Side Plate |
| BNT1239 | Pawl Cap | BNT2242 | Roller Clutch Inner Tube | BNT2284 | Thumb Rest |
| BNT1245 | Clutch Bar Support Spacer | BNT2243 | A-Side Seal | BNT2285 | Spool Assembly |
| BNT1289 | Star Drag Spacer | BNT2244 | Drive Shaft | BNT2286 | Left Side Plate |
| BNT1419 | Yoke Spring | BNT2245 | Clutch Cam | BNT2287 | Left Side I.D.Plate |
| BNT1455 | Drag Spring Washer | BNT2246 | Clutch Pawl | BNT2292 | Star Drag |
| BNT1456 | Drive Gear | BNT2247 | Clutch Plate | BNT2293 | Right Side Plate Nut |
| BNT1457 | Drive Shaft Washer (B) | BNT2248 | Set Plate | BNT2305 | Stand Bolt |
| BNT1458 | Anti-Reverse Ratchet | BNT2249 | Bearing Retainer | BNT2341 | Idle Gear (A) |
| BNT1461 | Yoke | BNT2250 | Line Guide | | |
| BNT1462 | Clutch Cam Retainer | BNT2251 | Worm Bushing (A) | | |