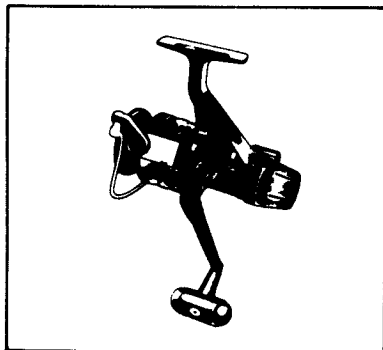


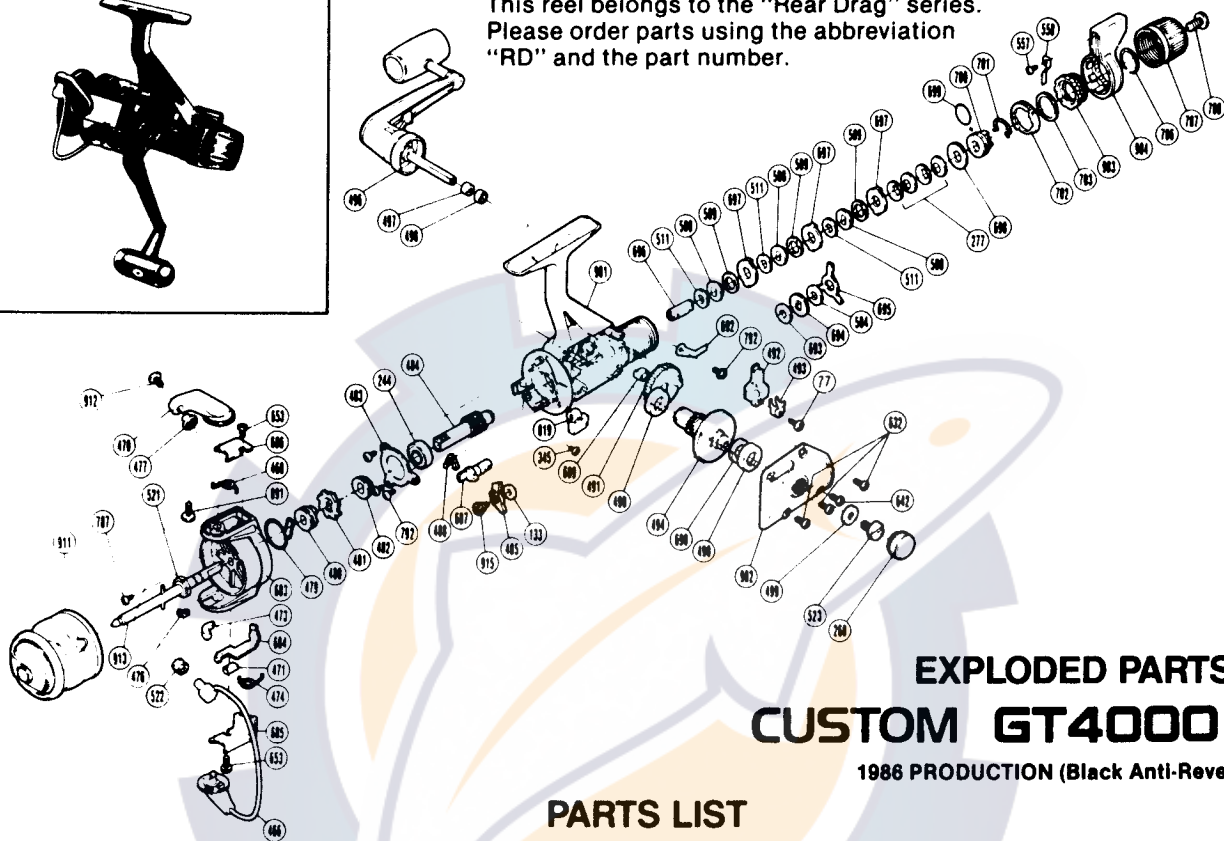
## 1987 REPAIR MANUAL

Shimano American Corporation, One Shimano Dr.  
 Irvine, CA 92718



### TO ORDER:

This reel belongs to the "Rear Drag" series.  
 Please order parts using the abbreviation  
 "RD" and the part number.



## EXPLODED PARTS VIEW CUSTOM GT4000 *Plus*

1986 PRODUCTION (Black Anti-Reverse Lever)

### PARTS LIST

#### PART # DESCRIPTION

- 77. Slider Retainer Screw
- 133. Anti-Reverse Pawl Spacer
- 244. Ball Bearing
- 260. Handle Screw Cap
- 277. Coned Disc Spring
- 345. Anti-Reverse Lever Screw
- 466. Bail Assembly
- 468. Bail Spring
- 470. Bail Arm
- 471. Trip Lever Guide
- 473. Bail Trip Slide Cam
- 474. Lever Spring
- 476. "E" Lock
- 477. Line Roller Washer
- 479. Anti-Reverse Pawl Spring
- 480. Anti-Reverse Spring Holder
- 481. Anti-Reverse Ratchet
- 482. Pinion Spacer A
- 483. Bearing Retainer
- 484. Pinion Gear
- 485. Anti-Reverse Pawl
- 488. Anti-Reverse Cam Spring
- 490. Bushing
- 491. Oscillating Gear
- 492. Oscillating Slider
- 493. Oscillating Slider Retainer

#### PART # DESCRIPTION

- 494. Drive Gear
- 496. Handle Assembly
- 497. Handle Lock Spacer
- 498. Handle Lock Ring
- 499. Handle Lock Washer
- 504. Drag Washer "C,"
- 508. Key Washer "A"
- 509. Drag Washer "F,"
- 511. Drag Washer "D,"
- 521. Rotor Nut
- 522. Line Roller
- 523. Handle Lock Screw (Originally 918)
- 557. Fightin' Drag Click Screw
- 558. Fightin' Drag Click
- 632. Side Cover Screw A
- 642. Side Cover Screw B
- 653. Cover Screw
- 683. Rotor
- 684. Bail Trip Lever
- 685. Bail Trip Cover
- 686. Bail Spring Cover
- 687. Anti-Reverse Cam
- 689. Oscillating Gear Bushing
- 690. Drive Gear Washer
- 692. Drag Click
- 693. Drag Washer "C<sub>2</sub>"

#### PART # DESCRIPTION

- 694. Click Gear
- 695. Eared Washer "B<sub>F</sub>"
- 696. Drag Shaft
- 697. Eared Washer "B"
- 698. Drag Spring Washer "A"
- 699. "O" Ring
- 700. Pressure Screw
- 701. Hold Click Spring
- 702. Lever Click Gear
- 703. Fightin' Pressure Screw Washer
- 706. Lever Hold Spring
- 707. Drag Programmer
- 708. Drag Programmer Screw
- 787. Nut Lock Screw
- 792. Multi Purpose Screw
- 819. Anti-Reverse Lever
- 891. Bail Arm Screw
- 911. Spool Assembly (Universal)
- 912. Line Roller Screw
- 913. Main Shaft
- 915. Anti-Reverse Pawl Screw
- 981. Body
- 982. Side Cover
- 983. Fightin' Pressure Screw
- 984. Fightin' Drag Lever

Prices and specifications subject to change without notice.

JUNE 1986