

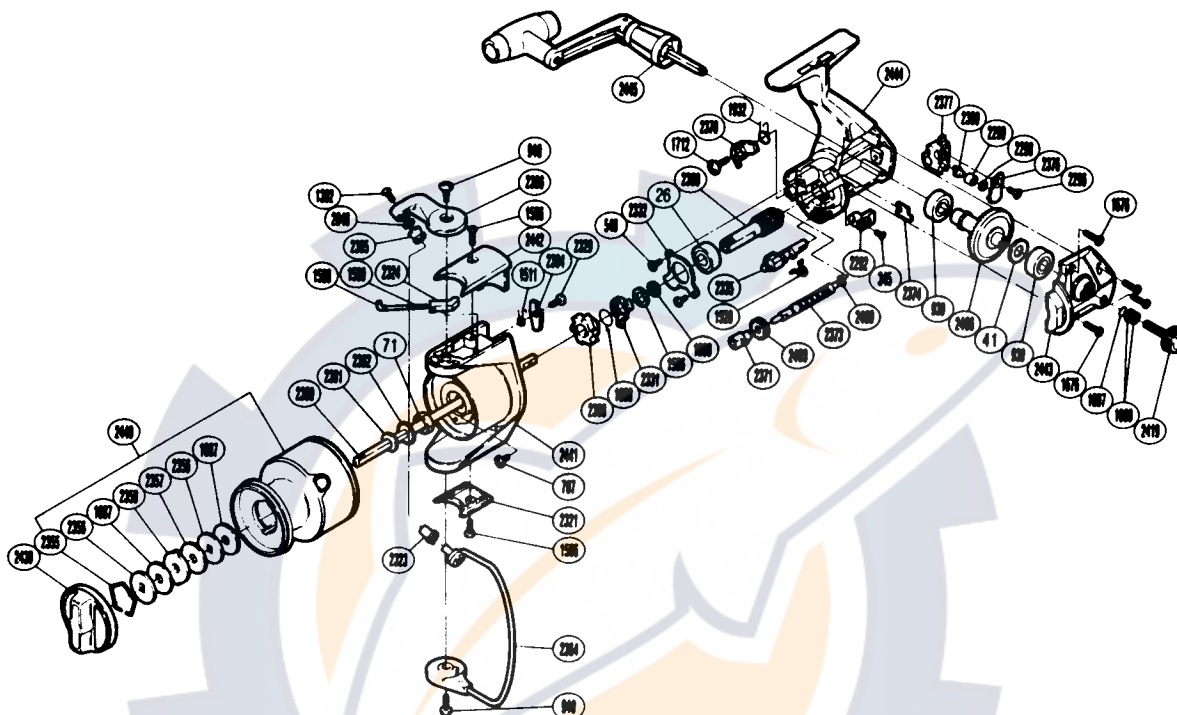
EXPLODED PARTS VIEW

CUSTOM-X SpeedMaster
AERO
8-12#A

SHIMANO®

1990 REPAIR MANUAL

Shimano American Corporation, One Shimano Dr.
 Irvine, CA 92718



TO ORDER: USE RD PREFIX
 WITH PART NUMBER

PARTS LIST

RD #	DESCRIPTION
0026	Ball Bearing
0041	Drive Gear Washer
0071	Rotor Nut
0345	Anti-Reverse Lever Screw
0540	Anti-Reverse Pawl Screw
0787	Nut Lock Screw
0930	Ball Bearing
0940	Bail Trip Cam Screw
1007	Lock Washer Retainer
1008	Handle Lock Washer
1087	Drag Washer 1
1302	Line Roller Screw
1506	Bail Spring Cover Screw
1508	Bail Spring Guide A
1509	Bail Spring
1511	Lever Spring
1520	Anti-Reverse Cam Spring
1596	Bushing Washer
1676	Side Cover Screw
1712	Anti-Reverse Pawl Screw
1888	Anti-Reverse Lock Out Spring
1890	Bushing Washer

RD #	DESCRIPTION
1932	Anti-Reverse Pawl Spring
2048	Line Roller Washer
2292	Anti-Reverse Lever
2296	Slider Retainer Screw
2298	Spacer
2299	Oscillating Slider Bushing
2300	Oscillating Pawl
2321	Rotor Side Cover
2323	Line Roller Bushing
2324	Bail Spring Guide (B)
2329	Bail Trip Lever Screw
2331	Anti-Reverse Lock Out
2332	Bearing Retainer
2335	Anti-Reverse Cam
2355	Drag Washers Retainer
2356	Key Washer
2357	Drag Washer 2
2358	Eared Washer
2360	Main Shaft
2361	Spool Washer
2362	Spool Support
2364	Bail Assembly

RD #	DESCRIPTION
2365	Line Roller
2366	Bail Arm
2368	Anti-Reverse Ratchet
2370	Anti-Reverse Pawl
2371	Worm Bearing
2373	Worm Shaft
2374	Worm Shaft Retainer
2376	Oscillating Pawl Cover
2377	Oscillating Slider
2394	Bail Trip Lever
2399	Pinion Gear
2403	Idle Gear
2406	Drive Gear
2409	Worm Shaft Spacer
2419	Handle Screw Cap
2439	Drag Knob
2440	Spool Assembly
2441	Rotor
2442	Bail Spring Cover
2443	Side Cover
2444	Body
2445	Handle Assembly

Prices and specifications subject to change without notice.