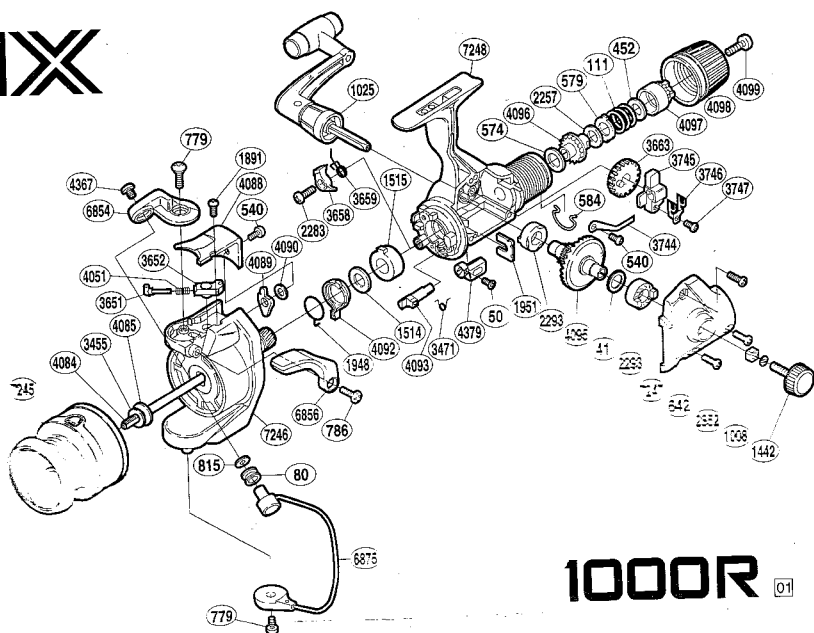
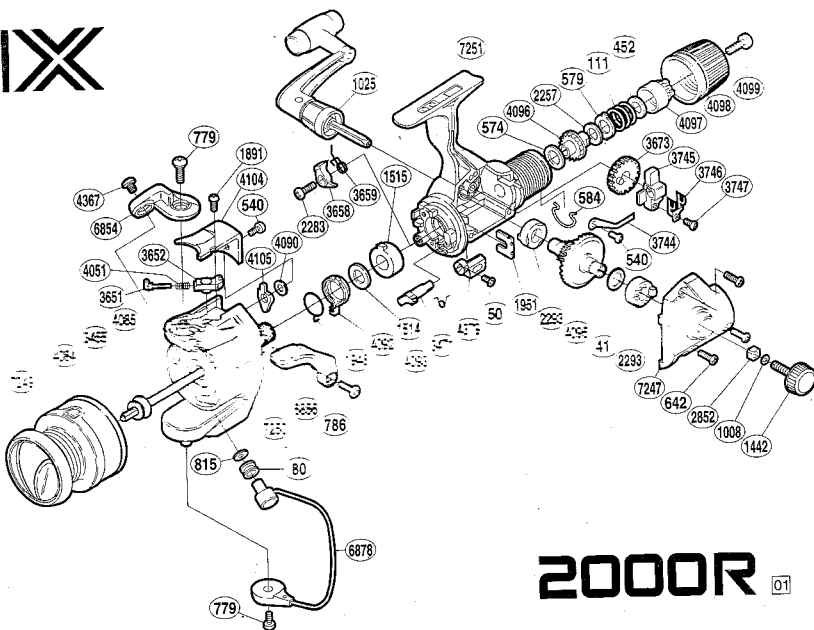


IX



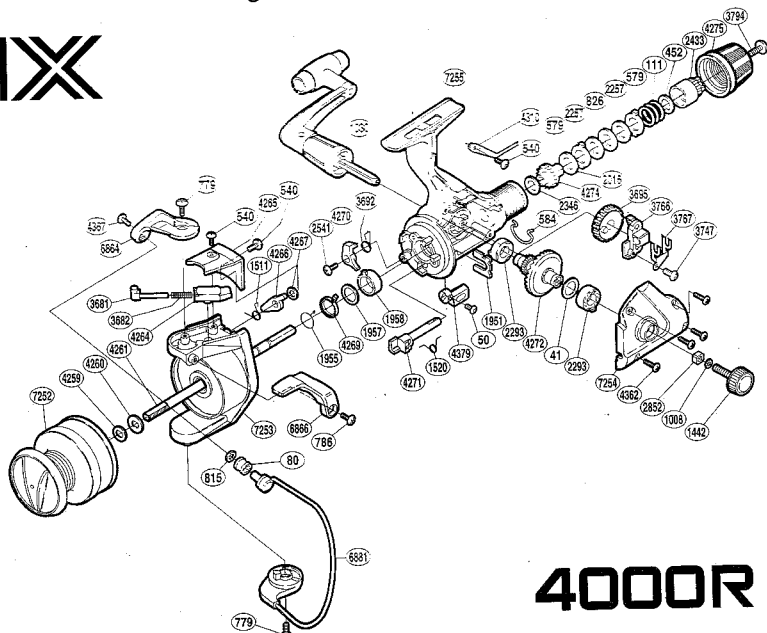
1000R 01

IX



2000R 01

IX



4000R 01

1000 R

RD No.	PARTS NAMES	RD No.	PARTS NAMES	RD No.	PARTS NAMES
0041	Drive Gear Washer	1951	Rotor Lock	4089	Bail Trip Lever
0050	Anti-Reverse Lever Screw	2257	Drag Washer "H" (blue)	4090	Bail Trip Lever Washer
0080	Line Roller	2283	Anti-Reverse Pawl Screw	4092	Anti-Reverse Lock Out
0111	Drag Coil Spring	2293	Drive Gear Bushing	4093	Anti-Reverse Cam
0452	Drag Spring Washer	2852	Handle Screw Lock	4095	Drive Gear
0540	Multi-Purpose Screw	3455	Spool Washer	4096	Drag Shaft
0574	Drag Washer "C" (cloth)	3471	Anti-Reverse Cam Spring	4097	Pressure Screw
0579	Eared Washer "B"	3651	Bail Spring Guide (A)	4098	Drag Knob
0584	Hold Click Spring	3652	Bail Spring Guide (B)	4099	Drag Knob Screw
0642	Side Cover Screw	3658	Anti-Reverse Pawl	4367	Line Roller Screw
0779	Multi-Purpose Screw	3659	Anti-Reverse Pawl Spring	4379	Anti-Reverse Lever
0786	Trigger Screw	3663	Oscillating Gear	6854	Bail Arm
0815	Line Roller Washer	3744	Drag Click	6856	Quick-Fire II Trigger
1008	Handle Lock Washer	3745	Oscillating Slider	6875	Bail Assembly
1025	Handle Assembly	3746	Oscillating Slider Retainer	7245	Spool Assembly
1442	Handle Screw Cap	3747	Slider Retainer Screw	7246	Rotor Assembly
1514	Bushing Washer	4051	Bail Spring	7247	Side Cover
1515	Bushing	4084	Main Shaft	7248	Body
1891	Bail Spring Cover Screw	4085	Spool Support		
1948	Anti-Reverse Lock Out Spring	4088	Bail Spring Cover		

(120828)

2000 R

RD No.	PARTS NAMES	RD No.	PARTS NAMES	RD No.	PARTS NAMES
0041	Drive Gear Washer	1951	Rotor Lock	4092	Anti-Reverse Lock Out
0050	Anti-Reverse Lever Screw	2257	Drag Washer "H" (blue)	4093	Anti-Reverse Cam
0080	Line Roller	2283	Anti-Reverse Pawl Screw	4095	Drive Gear
0111	Drag Coil Spring	2293	Drive Gear Bushing	4096	Drag Shaft
0452	Drag Spring Washer	2852	Handle Screw Lock	4097	Pressure Screw
0540	Multi-Purpose Screw	3455	Spool Washer	4098	Drag Knob
0574	Drag Washer "C" (cloth)	3471	Anti-Reverse Cam Spring	4099	Drag Knob Screw
0579	Eared Washer "B"	3651	Bail Spring Guide (A)	4104	Bail Spring Cover
0584	Hold Click Spring	3652	Bail Spring Guide (B)	4105	Bail Trip Lever
0642	Side Cover Screw	3658	Anti-Reverse Pawl	4367	Line Roller Screw
0779	Multi-Purpose Screw	3659	Anti-Reverse Pawl Spring	4379	Anti-Reverse Lever
0786	Trigger Screw	3673	Oscillating Gear	6854	Bail Arm
0815	Line Roller Washer	3744	Drag Click	6856	Quick-Fire II Trigger
1008	Handle Lock Washer	3745	Oscillating Slider	6875	Bail Assembly
1025	Handle Assembly	3746	Oscillating Slider Retainer	7247	Side Cover
1442	Handle Screw Cap	3747	Slider Retainer Screw	7249	Spool Assembly
1514	Bushing Washer	4051	Bail Spring	7250	Rotor Assembly
1515	Bushing	4084	Main Shaft	7251	Body
1891	Bail Spring Cover Screw	4085	Spool Support		
1948	Anti-Reverse Lock Out Spring	4090	Bail Spring Cover		

(120828)

4000 R

RD No.	PARTS NAMES	RD No.	PARTS NAMES	RD No.	PARTS NAMES
0041	Drive Gear Washer	1958	Bushing	4265	Bail Spring Cover
0050	Anti-Reverse Lever Screw	2016	Drag Washer "H" (cloth)	4266	Bail Trip Lever
0080	Line Roller	2257	Drag Washer "H" (blue)	4267	Bail Trip Lever Washer
0111	Drag Coil Spring	2293	Drive Gear Bushing	4269	Anti-Reverse Lock Out
0452	Drag Spring Washer	2346	Drag Washer "C" (cloth)	4270	Anti-Reverse Pawl
0540	Multi-Purpose Screw	2433	Pressure Screw	4271	Anti-Reverse Cam
0579	Eared Washer "B"	2541	Anti-Reverse Pawl Screw	4272	Drive Gear
0584	Hold Click Spring	2852	Handle Screw Lock	4274	Drag Shaft
0779	Multi-Purpose Screw	3681	Bail Spring Guide (A)	4275	Drag Knob
0786	Trigger Screw	3682	Bail Spring	4310	Drag Click
0815	Line Roller Washer	3692	Anti-Reverse Pawl Spring	4362	Side Cover Screw
0826	Key Washer "A"	3695	Oscillating Gear	4367	Line Roller Screw
1008	Handle Lock Washer	3747	Slider Retainer Screw	4379	Anti-Reverse Lever
1030	Handle Assembly	3766	Oscillating Slider	6864	Bail Arm
1442	Handle Screw Cap	3767	Oscillating Slider Retainer	6866	Quick-Fire II Trigger
1511	Lever Spring	3794	Drag Knob Screw	6881	Bail Assembly
1520	Anti-Reverse Cam Spring	4259	Spool Washer	7252	Spool Assembly
1951	Rotor Lock	4260	Spool Support	7253	Rotor Assembly
1955	Anti-Reverse Lock Out Spring	4261	Main Shaft	7254	Side Cover
1957	Bushing Washer	4264	Bail Spring Guide (B)	7255	Body

(120828)