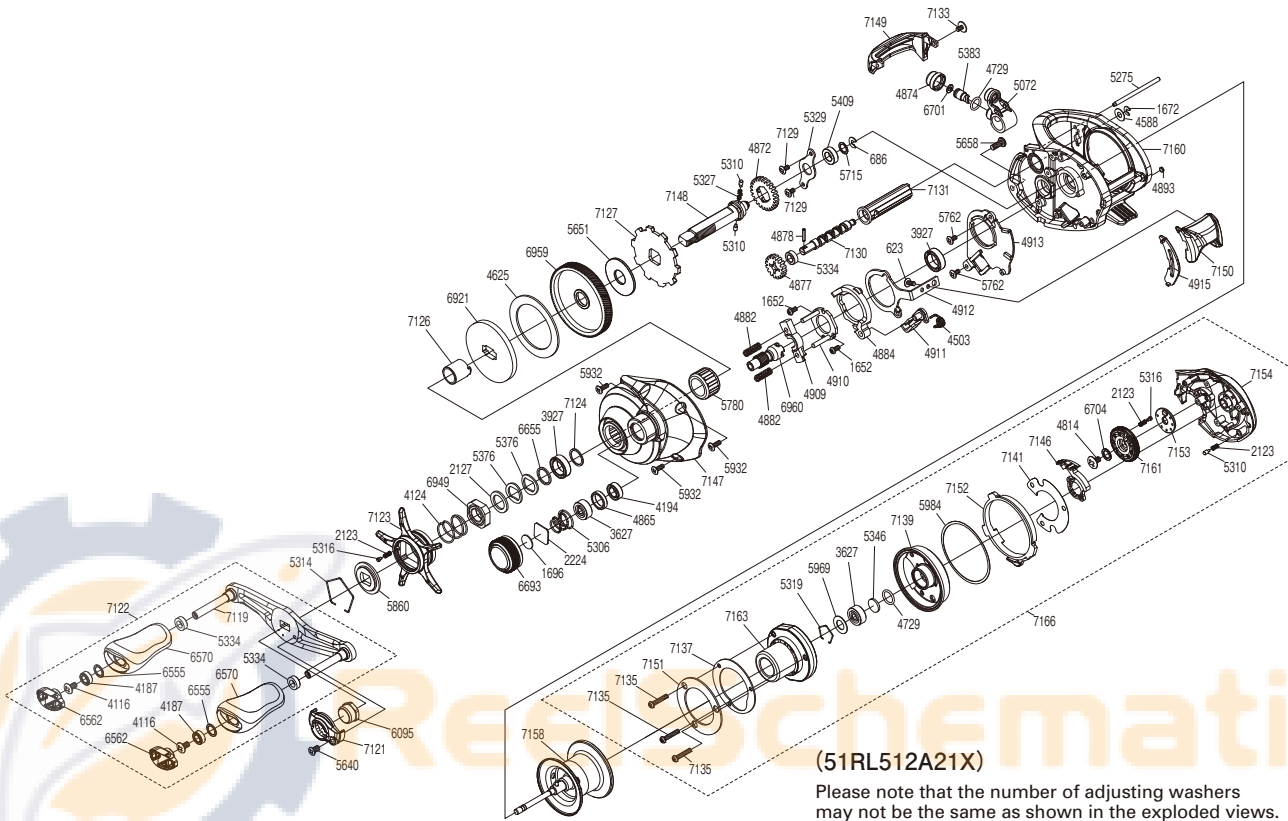


# SHIMANO

## SLX

## SLXDCXT71



(51RL512A21X)

Please note that the number of adjusting washers may not be the same as shown in the exploded views. (Adjustment will vary with each individual product.)

Part No.	Description	Part No.	Description	Part No.	Description
BNT0623	Screw	BNT5275	Stabilizer Bar	BNT6960	Pinion Gear
BNT0686	E Lock	BNT5306	Spool Tension Spring	BNT7119	Handle Shank Assembly
BNT1652	Screw	BNT5310	Idle Gear Pin	BNT7121	Handle Nut Plate
BNT1672	E Lock	BNT5314	Click Plate Retainer	BNT7122	Handle Assembly
BNT1696	Cast Control Spacer B	BNT5316	Click Pin	BNT7123	Star Drag
BNT2123	Click Spring	BNT5319	Bearing Retainer	BNT7124	Washer
BNT2127	Star Drag Spacer	BNT5327	Idle Gear Spring	BNT7126	Roller Clutch Inner Tube
BNT2224	Spool Tension Spacer A	BNT5329	Drive Shaft Retainer	BNT7127	Anti-Reverse Ratchet
BNT3627	Ball Bearing	BNT5334	Bushing	BNT7129	Screw
BNT3927	Ball Bearing	BNT5346	Spacer	BNT7130	Worm Shaft
BNT4116	Screw	BNT5376	Drag Spring Washer	BNT7131	Level Wind Guard
BNT4124	Star Drag Spring	BNT5383	Line Guide Pawl	BNT7133	Screw
BNT4187	Ball Bearing	BNT5409	Drive Shaft Bushing	BNT7135	Screw
BNT4194	Ball Bearing	BNT5640	Screw	BNT7137	Substrate Plate
BNT4503	Clutch Pawl Spring	BNT5651	Drag Washer A	BNT7139	Dial Case
BNT4588	Washer	BNT5658	Screw	BNT7141	Washer
BNT4625	Drag Washer C	BNT5715	Washer	BNT7146	Magnet Cam Assembly
BNT4729	O Ring	BNT5762	Screw	BNT7147	Left Side Plate
BNT4814	Screw	BNT5780	Roller Clutch Bearing	BNT7148	Drive Shaft
BNT4865	Bearing Spacer	BNT5860	Star Drag Click Plate	BNT7149	Level Wind Protector
BNT4872	Idle Gear A	BNT5932	Screw	BNT7150	Clutch Button
BNT4874	Pawl Cap	BNT5969	Bearing Seal	BNT7151	Substrate Plate Sticker
BNT4877	Idle Gear C	BNT5984	Washer	BNT7152	B Side Plate Cam Lever
BNT4878	Worm Shaft Pin	BNT6095	Handle Nut	BNT7153	Click Ring
BNT4882	Yoke Spring	BNT6555	Washer	BNT7154	Right Side Plate
BNT4884	Clutch Cam Retainer	BNT6562	Handle Knob Seal	BNT7158	Spool Assembly
BNT4893	Washer	BNT6570	Handle Knob	BNT7160	Frame Assembly
BNT4909	Yoke	BNT6655	Washer	BNT7161	Brake Dial Assembly
BNT4910	Clutch Cam	BNT6693	Cast Control Cap	BNT7163	B Side Plate Substrate
BNT4911	Clutch Pawl Assembly	BNT6701	Spacer	BNT7166	Right Side Plate Assembly
BNT4912	Clutch Plate	BNT6704	Washer		
BNT4913	Clutch Guard	BNT6921	Key Washer		
BNT4915	Clutch Bar Guide	BNT6949	Star Drag Nut		
BNT5072	Line Guide	BNT6959	Drive Gear	BNT4692	B-100 Oil (Accessory)