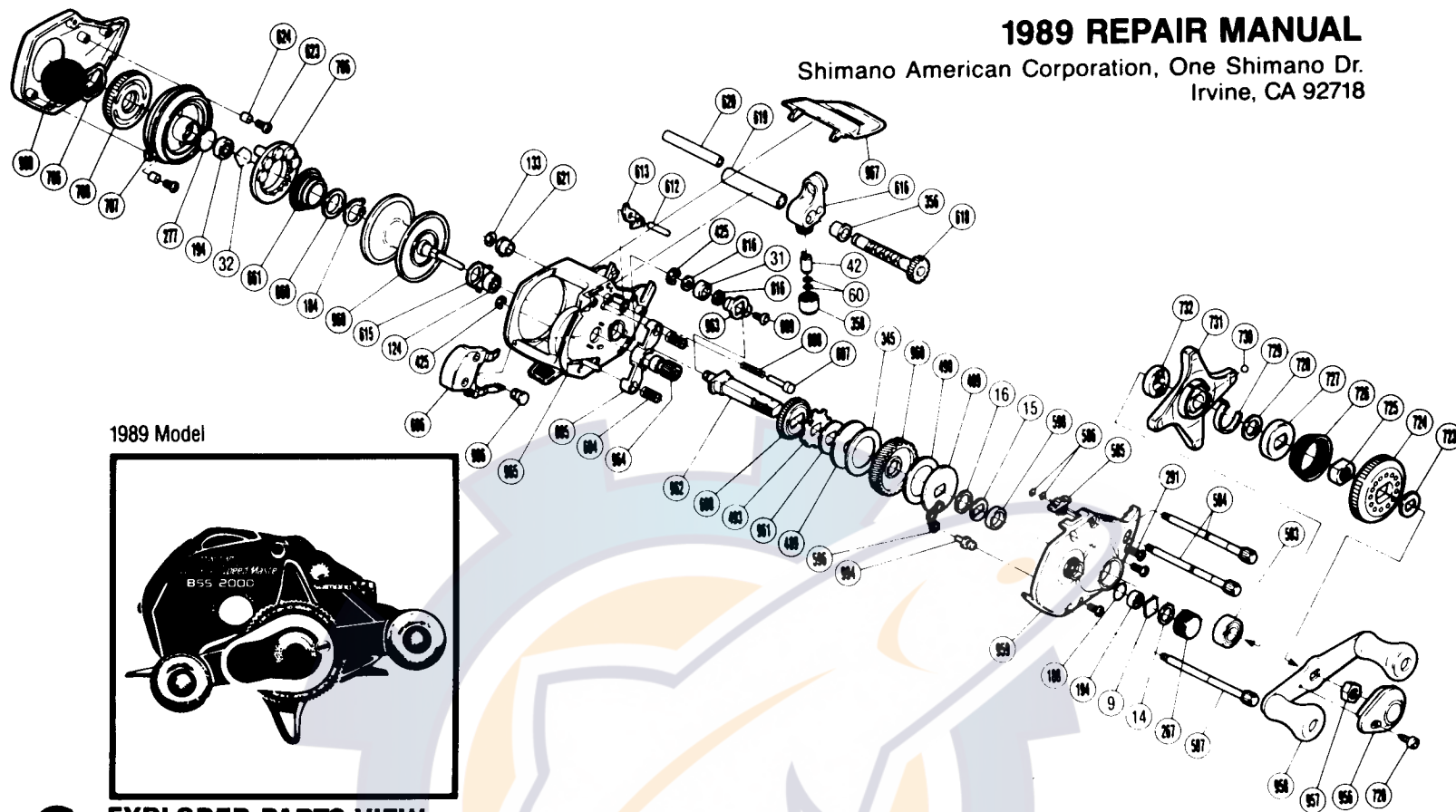
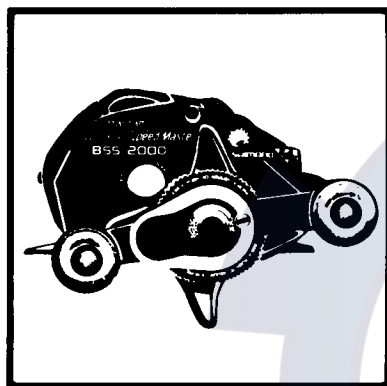


1989 REPAIR MANUAL

Shimano American Corporation, One Shimano Dr.
Irvine, CA 92718



1989 Model



EXPLODED PARTS VIEW

SUPER
Bantam Speed Master 2000

PARTS LIST

PART # DESCRIPTION

- BNT 0009 Spacer (A)
- BNT 0014 Friction Washer (B)
- BNT 0015 Drag Spring Washer
- BNT 0016 Friction Washer (C)
- BNT 0031 Spool Shaft Bearing
- BNT 0032 Bearing Retainer
- BNT 0042 Line Guide Pawl
- BNT 0060 Spacer (Optional)
- BNT 0124 Spool Shaft Bearing
- BNT 0133 Worm Shaft Retainer
- BNT 0184 Magnet Retainer Lock
- BNT 0188 O Ring
- BNT 0194 Ball Bearing
- BNT 0267 Cast Control Cap
- BNT 0277 Spacer (B)
- BNT 0291 Side Plate Screw
- BNT 0345 Drive Shaft Washer "B"
- BNT 0356 Worm Bearing "A"
- BNT 0358 Pawl Cap
- BNT 0425 Clutchbutton Lock
- BNT 0489 Key Washer "A"
- BNT 0490 Drag Washer
- BNT 0493 Anti-Reverse Ratchet
- BNT 0563 Drive Shaft Bearing
- BNT 0584 Left Side Plate Bolt "C"
- BNT 0585 Anti-Reverse Switch
- BNT 0586 Bolt Retainer

PART # DESCRIPTION

- BNT 0587 Left Side Plate Bolt "A"
- BNT 0596 Retractor Spring
- BNT 0598 Bushing
- BNT 0600 Idle Gear
- BNT 0604 Yoke Spring
- BNT 0605 Yoke
- BNT 0606 Clutch Button
- BNT 0607 Switch Spring Pin
- BNT 0608 Switch Spring
- BNT 0609 Drive Shaft Retainer Screw
- BNT 0612 Anti-Reverse Pawl Pin
- BNT 0613 Anti-Reverse Pawl
- BNT 0615 Bearing Retainer
- BNT 0616 Line Guide
- BNT 0618 Worm Shaft
- BNT 0619 Level Wind Guard
- BNT 0620 Stabilizer Bar
- BNT 0621 Worm Bearing "B"
- BNT 0623 Dial Case Screw
- BNT 0624 Screw Support
- BNT 0660 Spring Spacer
- BNT 0661 Magnet Retainer Spring
- BNT 0706 Magnet Retainer
- BNT 0707 Dial Case
- BNT 0708 Magnet Control Dial
- BNT 0720 Handle Nut Plate Screw
- BNT 0723 Friction Washer "A"

PART # DESCRIPTION

- BNT 0724 Pre-Set Dial
- BNT 0725 Pre-Set Nut
- BNT 0726 Pre-Set Spring
- BNT 0727 Strike
- BNT 0728 Pre-Set Washer
- BNT 0729 Strike Spring
- BNT 0730 Strike Ball
- BNT 0731 Star Drag
- BNT 0732 Drive Shaft Cam
- BNT 0766 Dial Friction Washer
- BNT 0816 Drive Shaft Washer
- BNT 0956 Handle Nut Plate
- BNT 0957 Handle Nut
- BNT 0958 Handle Assembly
- BNT 0959 Right Side Plate
- BNT 0960 Drive Gear
- BNT 0961 Key Washer "B"
- BNT 0962 Drive Shaft
- BNT 0963 Drive Shaft Retainer
- BNT 0964 Pinion Gear
- BNT 0965 One-Piece Frame
- BNT 0966 Clutch Button Guide Pin
- BNT 0967 Thumb Rest
- BNT 0968 Spool
- BNT 0969 Left Side Plate
- BNT 0994 Retractor Spring Pin