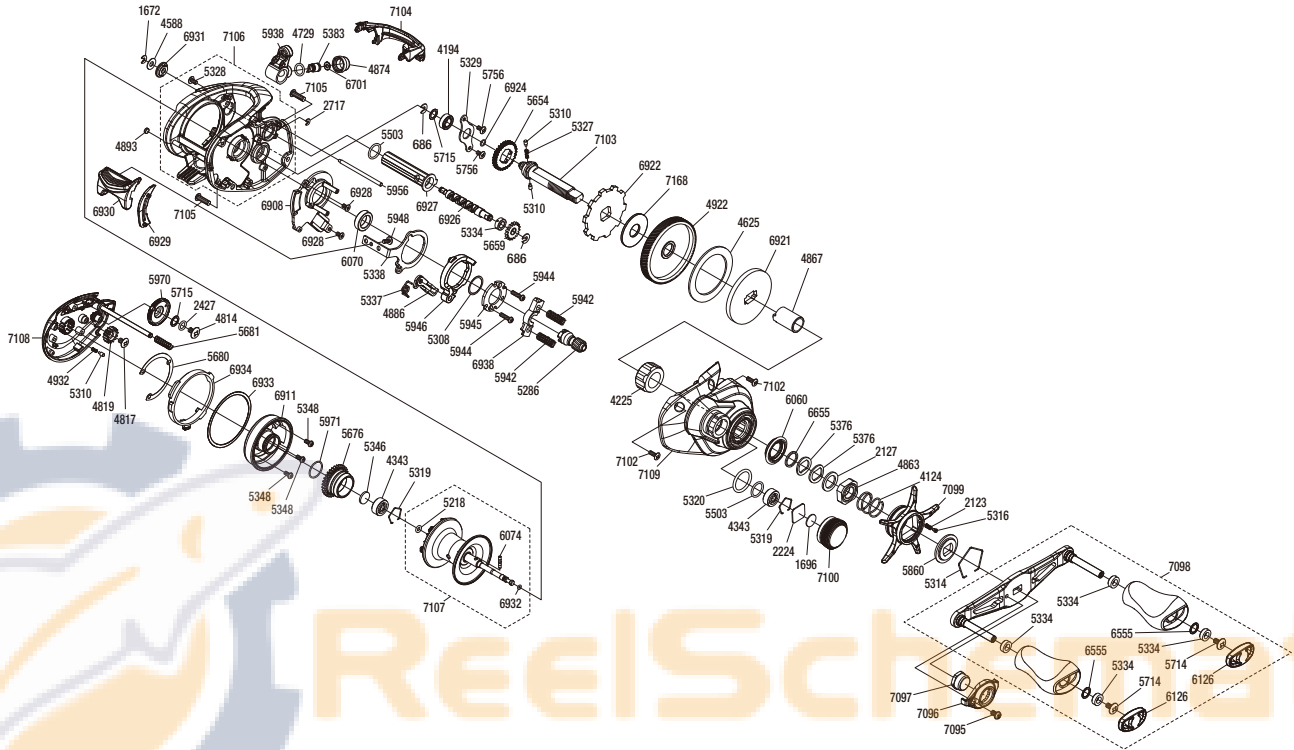


SHIMANO

TRAX

TRX150HGA



(51RL532A30X)

| # | Part No. | Description | # | Part No. | Description | # | Part No. | Description |
|------|----------|--------------------------|------|----------|---------------------------|------|----------|---------------------------|
| 686 | 105NK | E Lock | 5328 | 10LCQ | Screw | 6701 | 10CFU | Spacer |
| 1672 | 105NC | E Lock | 5329 | 109T1 | Drive Shaft Retainer | 6908 | 10R56 | Clutch Guard Assembly |
| 1696 | 10896 | Cast Control Spacer B | 5334 | 10PXZ | Bushing | 6911 | 10S8R | Brake Case |
| 2123 | 10BT2 | Click Spring | 5337 | 10R1H | Clutch Pawl Spring | 6921 | 100BK | Key Washer |
| 2127 | 10J1N | Star Drag Spacer | 5338 | 10QZV | Clutch Plate | 6922 | 100BJ | Anti-Reverse Ratchet |
| 2224 | 1085F | Cast Control Spacer A | 5346 | 10EX5 | Bearing Spacer | 6924 | 108WU | O Ring |
| 2427 | 108WS | O Ring | 5348 | 10L1Q | Screw | 6926 | 10S8K | Worm Shaft |
| 2717 | 105NB | E Lock | 5376 | 109F5 | Washer | 6927 | 10T3X | Level Wind Guard |
| 4124 | 10A70 | Star Drag Spring | 5383 | 10BHQ | Line Guide Pawl | 6928 | 100S4 | Screw |
| 4194 | 105BP | Ball Bearing | 5503 | 101GT | O Ring | 6929 | 10T3V | Clutch Bar Guide B |
| 4225 | 10F3C | Roller Clutch Bearing | 5654 | 101K8 | Idle Gear A | 6930 | 101EC | Clutch Button |
| 4343 | 105C3 | Ball Bearing | 5659 | 10SRL | Idle Gear C | 6931 | 100G7 | Level Wind Guard Bushing |
| 4588 | 10FJZ | Washer | 5676 | 101DR | Brake Ring Gear | 6932 | 100BH | O Ring |
| 4625 | 106XT | Drag Washer C | 5680 | 10SSN | Washer | 6933 | 101UN | Washer |
| 4729 | 108WQ | O Ring | 5681 | 10KNH | Spring | 6934 | 101Q2 | Left Side Plate Cam Lever |
| 4814 | 103LE | Screw | 5714 | 10LFA | Screw | 6938 | 10S8M | Yoke |
| 4817 | 103L7 | Screw | 5715 | 10G6D | Washer | 7095 | 10LHR | Screw |
| 4819 | 10CLF | Idle Gear | 5756 | 10S3Y | Screw | 7096 | 10SJ1 | Handle Nut Plate |
| 4863 | 10A3T | Star Drag Nut | 5860 | 10J26 | Star Drag Click Plate | 7097 | 10DVL | Handle Nut |
| 4867 | 10CCN | Roller Clutch Inner Tube | 5938 | 10DUG | Line Guide Assembly | 7098 | 10TJ1 | Handle Assembly |
| 4874 | 10FJB | Pawl Cap | 5942 | 100U9 | Yoke Spring | 7099 | 10SUQ | Star Drag |
| 4886 | 10MME | Clutch Pawl Assembly | 5944 | 10LV0 | Screw | 7100 | 1001M | Cast Control Cap |
| 4893 | 108PY | Washer | 5945 | 100US | Clutch Cam Retainer | 7102 | 10MPT | Screw |
| 4922 | 10CMC | Drive Gear | 5946 | 100UK | Clutch Cam | 7103 | 10SUN | Drive Shaft |
| 4932 | 10GQZ | Click Spring | 5948 | 10LF4 | Screw | 7104 | 10SUP | Level Wind Protector |
| 5218 | 10EZ7 | O Ring | 5956 | 100UT | Stabilizer Bar | 7105 | 10DQW | Screw |
| 5286 | 10CSC | Pinion Gear | 5970 | 10SAZ | Brake Dial | 7106 | 100T7 | Frame Assembly |
| 5308 | 10190 | Washer | 5971 | 100GW | O Ring | 7107 | 10TE4 | Spool Assembly |
| 5310 | 10HJG | Idle Gear Pin | 6060 | 10DRE | Roller Clutch Water Proof | 7108 | 100T6 | Left Side Plate Assembly |
| 5314 | 10KXW | Click Plate Retainer | 6070 | 10DRK | Pinion Gear Bushing | 7109 | 10SJ0 | Right Side Plate |
| 5316 | 10MFC | Click Pin | 6074 | 10P68 | Spool Clutch Pin | 7168 | 109BN | Drag Washer A |
| 5319 | 1054D | Bearing Retainer | 6126 | 100NC | Handle Knob Seal | | | |
| 5320 | 10R22 | O Ring | 6555 | 104FH | Washer | | | |
| 5327 | 10JDY | Idle Gear Spring | 6655 | 100SE | Washer | | | |

Please note that the number of adjusting washers may not be the same as shown in the exploded views.
(Adjustment will vary with each individual product.)

(230731)_003