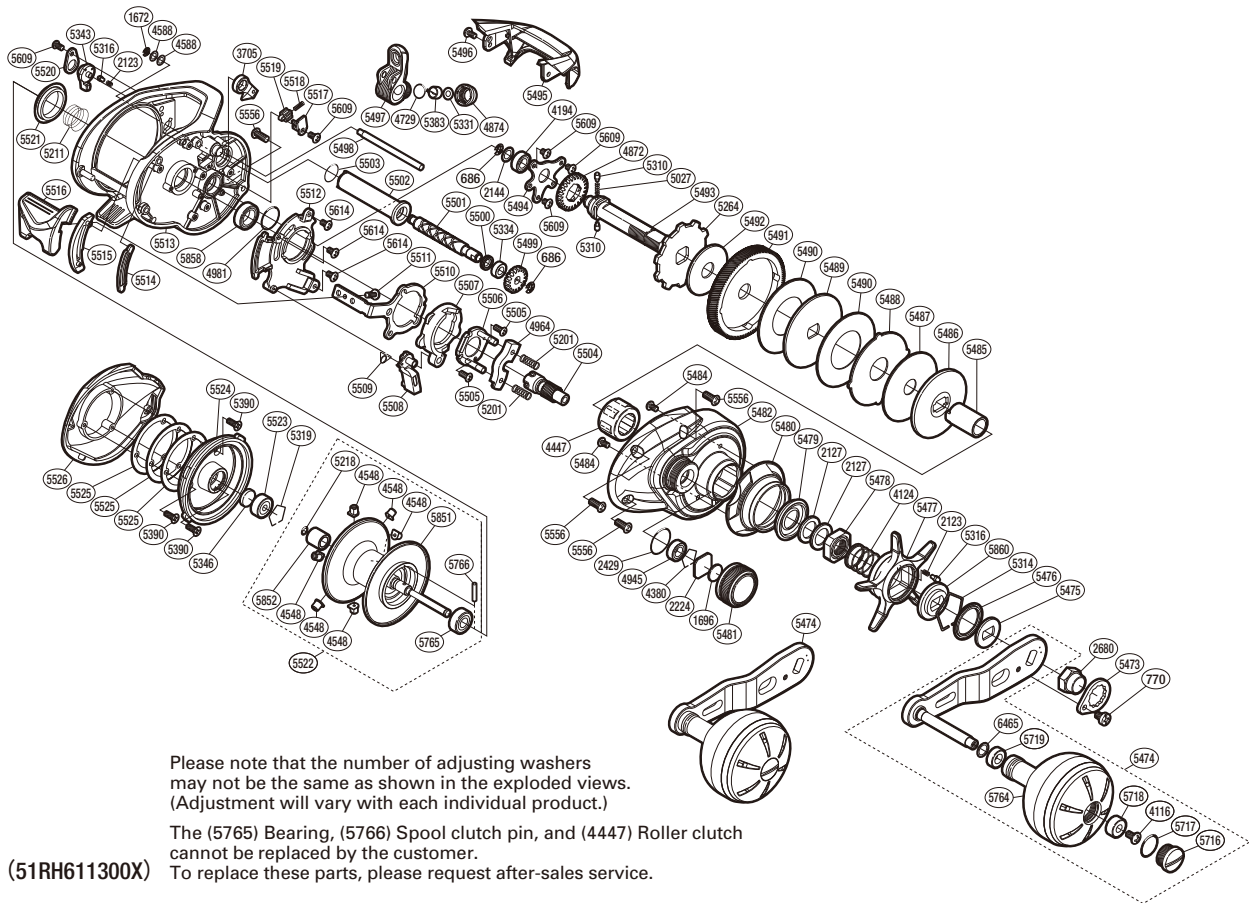


SHIMANO

TRANX SA-RB

TRX-300AHG



Please note that the number of adjusting washers may not be the same as shown in the exploded views. (Adjustment will vary with each individual product.)

The (5765) Bearing, (5766) Spool clutch pin, and (4447) Roller clutch cannot be replaced by the customer.

(51RH611300X) To replace these parts, please request after-sales service.

Part No.	Description	Part No.	Description	Part No.	Description
BNT0686	E Lock	BNT5383	Line Guide Pawl	BNT5510	Clutch Plate
BNT0770	Screw	BNT5390	Screw	BNT5511	Screw
BNT1672	E Lock	BNT5473	Handle Nut Plate	BNT5512	Clutch Guard
BNT1696	Cast Control Spacer (B)	BNT5474	Handle Assembly	BNT5513	Frame
BNT2123	Click Spring	BNT5475	Drive Shaft Shield	BNT5514	Clutch Button Seal
BNT2127	Star Drag Spacer	BNT5477	Star Drag	BNT5515	Clutch Bar Guide
BNT2144	Drive Shaft Washer	BNT5478	Star Drag Nut	BNT5516	Clutch Lever
BNT2224	Spool Tension Spacer (A)	BNT5479	Roller Clutch Water Proof	BNT5517	Retention Spring Retainer
BNT2429	O Ring	BNT5480	Clutch Button Attachment	BNT5518	Clutch Retention Spring
BNT2680	Handle Nut	BNT5481	Cast Control Cap	BNT5519	Clutch Retention Pin
BNT3705	Anti-Reverse Pawl	BNT5482	Right Side Plate	BNT5520	Cam Lever Retainer
BNT4116	Screw	BNT5484	Screw	BNT5521	Frame Center Seal
BNT4124	Star Drag Spring	BNT5485	Roller Clutch Inner Tube	BNT5522	Spool Assembly
BNT4194	Ball Bearing	BNT5486	Key Washer	BNT5523	Ball Bearing
BNT4380	Retainer	BNT5487	Drag Washer	BNT5524	Dial Case
BNT4447	Roller Clutch Bearing	BNT5488	Eared Washer	BNT5525	Washer
BNT4548	Brake Collar	BNT5489	Key Washer	BNT5526	Left Side Plate
BNT4588	Washer	BNT5490	Drag Washer	BNT5532	Star Drag Seal
BNT4729	O Ring	BNT5491	Drive Gear	BNT5556	Screw
BNT4872	Idle Gear	BNT5492	Drag Washer	BNT5609	Screw
BNT4874	Pawl Cap	BNT5493	Drive Shaft	BNT5614	Screw
BNT4945	Ball Bearing	BNT5494	Drive Shaft Retainer	BNT5716	Handle Knob Seal
BNT4964	Yoke	BNT5495	Level Wind Protector	BNT5717	O Ring
BNT4981	O Ring	BNT5496	Screw	BNT5718	Handle Knob Bushing A
BNT5027	Idle Gear Spring	BNT5497	Line Guide	BNT5719	Handle Knob Bushing
BNT5201	Yoke Spring	BNT5498	Stabilizer Bar	BNT5764	Handle Knob Assembly
BNT5211	Bearing Pressure Spring	BNT5499	Idle Gear	BNT5765	Ball Bearing
BNT5218	O Ring	BNT5500	Worm Shaft Seal	BNT5766	Spool Clutch Pin
BNT5264	Anti-Reverse Ratchet	BNT5501	Worm Shaft	BNT5851	Spool
BNT5310	Idle Gear Pin	BNT5502	Level Wind Guard	BNT5852	Spool Shaft Bushing
BNT5314	Click Plate Retainer	BNT5503	O Ring	BNT5858	Ball Bearing
BNT5316	Click Pin	BNT5504	Pinion Gear	BNT5860	Star Drag Click Plate
BNT5319	Bearing Retainer	BNT5505	Screw	BNT6465	Washer
BNT5331	Spacer	BNT5506	Clutch Cam Retainer		
BNT5334	Bushing	BNT5507	Clutch Cam		
BNT5343	Side Plate Cam Lever	BNT5508	Clutch Pawl		
BNT5346	Spacer B	BNT5509	Clutch Pawl Spring	BNT4692	B-100 Oil (Accessory)