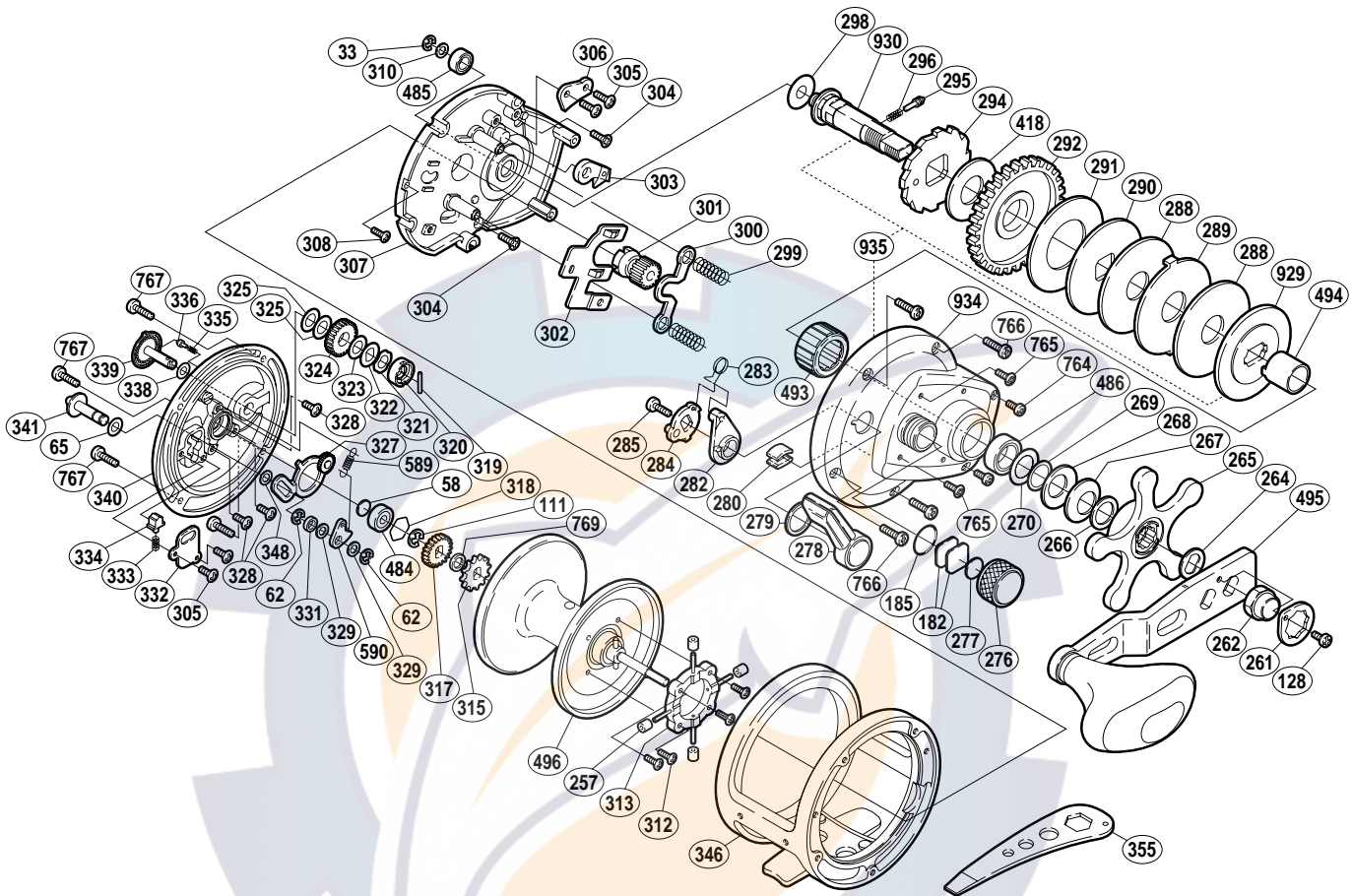


SHIMANO®

TRINIDAD ⚙️ A-RB

TN-16



| Part No. | Description | Part No. | Description | Part No. | Description |
|----------|-------------------------|----------|--------------------------|----------|----------------------------|
| TGT0033 | Drive Shaft Retainer | TGT0294 | Anti-Reverse Ratchet | TGT0333 | Click Spring |
| TGT0058 | Spacer "B" | TGT0295 | Click Pin | TGT0334 | Click Spring Holder |
| TGT0062 | Click Pawl Retainer | TGT0296 | Click Spring | TGT0335 | "BR" Click Spring |
| TGT0065 | Spacer (A) | TGT0298 | Drive Shaft Washer (B) | TGT0336 | "BR" Click Pin |
| TGT0111 | Click Gear Retainer | TGT0299 | Yoke Spring | TGT0338 | "BR" Washer (D) |
| TGT0128 | Handle Nut Plate Screw | TGT0300 | Yoke | TGT0339 | "BR" Dial |
| TGT0182 | Cast Control Spacer (A) | TGT0301 | Pinion Gear | TGT0340 | Left Side Plate |
| TGT0185 | "O" Ring | TGT0302 | Yoke Plate | TGT0341 | Click Button |
| TGT0257 | Brake Collar | TGT0303 | Anti-Reverse Pawl | TGT0346 | One-Piece Frame |
| TGT0261 | Handle Nut Plate | TGT0304 | Set Plate Screw (B) | TGT0348 | Spacer (C) |
| TGT0262 | Handle Nut | TGT0305 | Multi-Purpose Screw | TGT0418 | Drag Washer (A) |
| TGT0264 | Drive Shaft Shield | TGT0306 | Anti-Reverse Pawl Keeper | TGT0484 | Ball Bearing |
| TGT0265 | Star Drag | TGT0307 | Set Plate | TGT0485 | Ball Bearing |
| TGT0266 | Star Drag Washer | TGT0308 | Set Plate Screw (A) | TGT0486 | Ball Bearing |
| TGT0267 | Drag Spring Washer (9L) | TGT0310 | Drive Shaft Washer (A) | TGT0493 | Roller Clutch Bearing |
| TGT0268 | Drag Spring Washer (9H) | TGT0312 | Brake Shaft Holder Screw | TGT0494 | Roller Clutch Inner Tube |
| TGT0269 | Bearing Thrust Washer | TGT0313 | Brake Shaft Holder | TGT0495 | Handle Assembly |
| TGT0270 | Bearing Seal | TGT0315 | Click Gear | TGT0496 | Spool Assembly |
| TGT0276 | Cast Control Cap | TGT0317 | "BR" Gear (A) | TGT0589 | Click Pawl Spring |
| TGT0277 | Cast Control Spacer (B) | TGT0318 | Bearing Retainer | TGT0590 | Click Pawl |
| TGT0278 | Clutch Lever | TGT0319 | "BR" Cam Pin | TGT0764 | Right Side Plate Screw (D) |
| TGT0279 | Smoother | TGT0320 | "BR" Cam | TGT0765 | Right Side Plate Screw (C) |
| TGT0280 | Line Clip | TGT0321 | "BR" Friction Washer | TGT0766 | Right Side Plate Screw (A) |
| TGT0282 | Eccentric Cam Bushing | TGT0322 | "BR" Washer (C) | TGT0767 | Left Side Plate Screw |
| TGT0283 | Clutch Spring | TGT0323 | "BR" Washer (A) | TGT0769 | Spool Shaft Spacer |
| TGT0284 | Clutch Cam | TGT0324 | "BR" Gear (C) | TGT0929 | Key Washer |
| TGT0285 | Clutch Lever Screw | TGT0325 | "BR" Washer (B) | TGT0930 | Drive Shaft |
| TGT0288 | Drag Washer (D) | TGT0327 | "BR" Set Plate | TGT0934 | Right Side Plate |
| TGT0289 | Eared Washer (E) | TGT0328 | "BR" Set Plate Screw | TGT0935 | Upgrade Assembly |
| TGT0290 | Key Washer (C) | TGT0329 | Spacer (B) | | |
| TGT0291 | Drag Washer (B) | TGT0331 | Click Pawl Spacer | | |
| TGT0292 | Drive Gear | TGT0332 | Click Spring Retainer | TGT0355 | Wrench (accessory) |