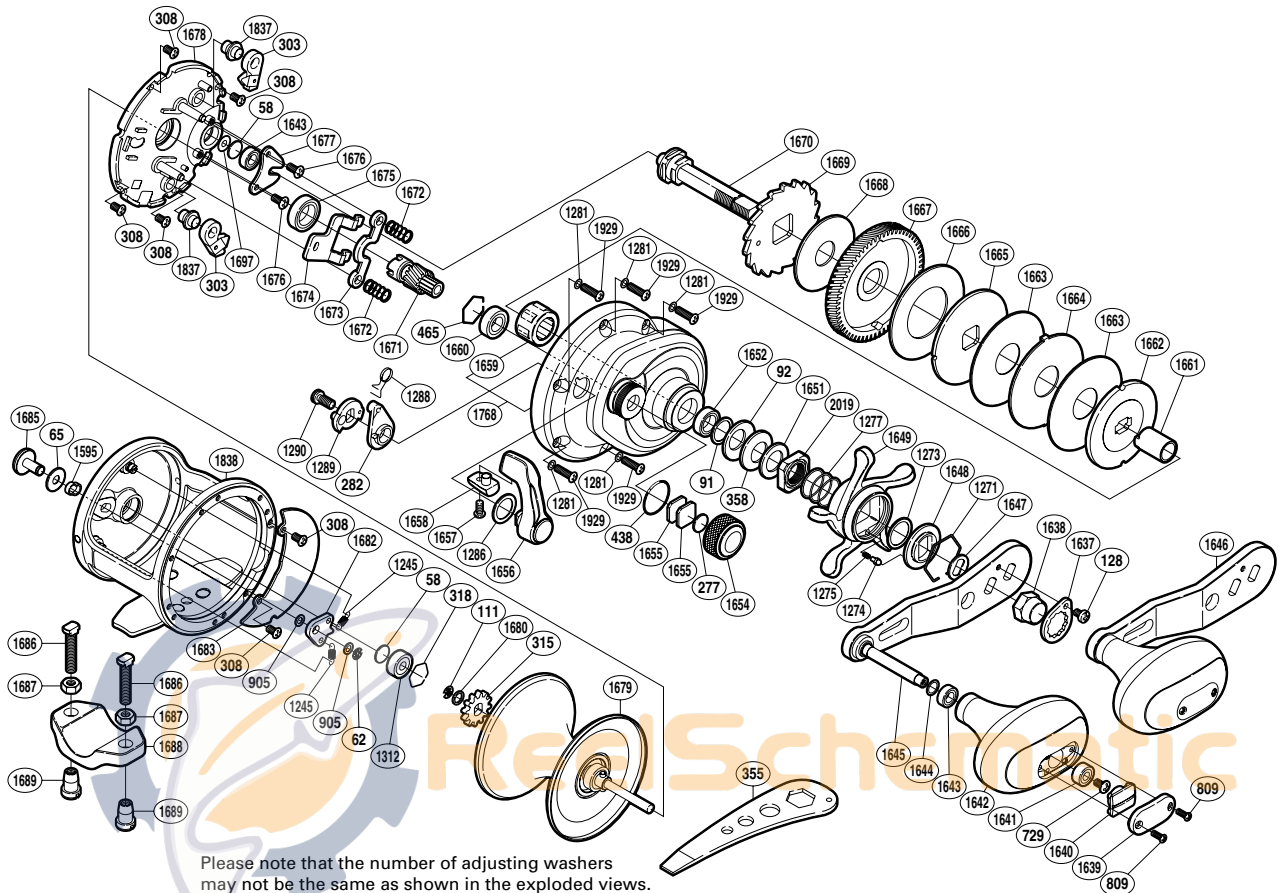


SHIMANO

TRINIDAD SA-RB

TN-20A



Please note that the number of adjusting washers may not be the same as shown in the exploded views. (Adjustment will vary with each individual product.)

(1R212020U)

| Part No. | Description | Part No. | Description | Part No. | Description |
|----------|------------------------|----------|--------------------------|----------|-----------------------------|
| TGT0058 | Spacer B | TGT1312 | Ball Bearing | TGT1667 | Drive Gear |
| TGT0062 | E Lock | TGT1595 | Click Switch Cam | TGT1668 | Drag Washer |
| TGT0065 | Spacer | TGT1637 | Handle Nut Plate | TGT1669 | Anti-Reverse Ratchet |
| TGT0091 | Washer | TGT1638 | Handle Nut | TGT1670 | Drive Shaft |
| TGT0092 | Coned Disc Spring (8H) | TGT1639 | Handle Knob I.D. Plate | TGT1671 | Pinion Gear |
| TGT0111 | E Lock | TGT1640 | Handle Knob Seal | TGT1672 | Yoke Spring |
| TGT0128 | Screw | TGT1641 | Ball Bearing | TGT1673 | Yoke |
| TGT0277 | Cast Control Spacer | TGT1642 | Handle Knob | TGT1674 | Clutch Plate |
| TGT0282 | Eccentric Cam Bushing | TGT1643 | Ball Bearing | TGT1675 | Ball Bearing |
| TGT0303 | Anti-Reverse Pawl | TGT1644 | Washer | TGT1676 | Screw |
| TGT0308 | Screw | TGT1645 | Handle Shank Assembly | TGT1677 | Drive Shaft Retainer |
| TGT0315 | Click Gear | TGT1646 | Handle Assembly | TGT1678 | Set Plate |
| TGT0318 | Bearing Retainer | TGT1647 | Drive Shaft Shield | TGT1679 | Spool Assembly |
| TGT0358 | Coned Disc Spring (8L) | TGT1648 | Star Drag Click Plate | TGT1680 | Washer |
| TGT0438 | O Ring | TGT1649 | Star Drag | TGT1682 | Click Pawl |
| TGT0465 | Bearing Retainer | TGT1651 | Star Drag Spacer | TGT1683 | Set Plate Sticker |
| TGT0729 | Screw | TGT1652 | Ball Bearing | TGT1685 | Click Button |
| TGT0809 | Screw | TGT1654 | Cast Control Cap | TGT1697 | Washer |
| TGT0905 | Spacer | TGT1655 | Cast Control Spacer | TGT1768 | Right Side Plate |
| TGT1245 | Click Pawl Spring | TGT1656 | Clutch Lever | TGT1837 | Anti-Reverse Pawl Shaft |
| TGT1271 | Click Plate Retainer | TGT1657 | Screw | TGT1838 | One-Piece Frame |
| TGT1273 | Washer | TGT1658 | Clutch Lever Protector | TGT1929 | Screw |
| TGT1274 | Click Pin | TGT1659 | Roller Clutch Bearing | TGT2019 | Star Drag Nut |
| TGT1275 | Click Spring | TGT1660 | Ball Bearing | | |
| TGT1277 | Star Drag Spring | TGT1661 | Roller Clutch Inner Tube | TGT1686 | Rod Clamp Bolt (accessory) |
| TGT1281 | Washer | TGT1662 | Pressure Plate | TGT1687 | Rod Clamp Nut B (accessory) |
| TGT1286 | Smoother | TGT1663 | Drag Washer | TGT1688 | Rod Clamp (accessory) |
| TGT1288 | Clutch Spring | TGT1664 | Eared Washer | TGT1689 | Rod Clamp Nut A (accessory) |
| TGT1289 | Clutch Cam | TGT1665 | Drag Washer | | |
| TGT1290 | Screw | TGT1666 | Drag Washer | TGT0355 | Wrench (accessory) |