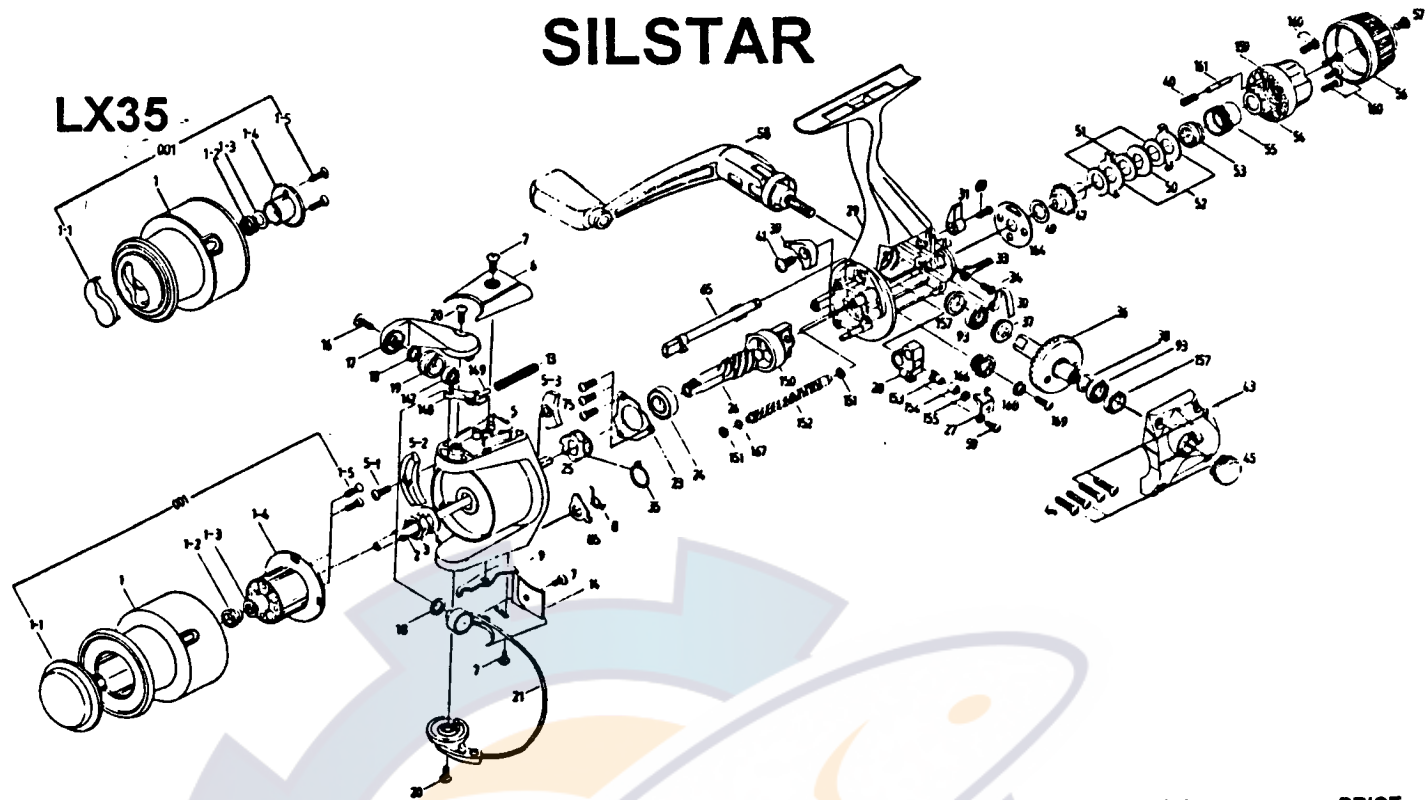


SILSTAR

LX35



| REF.NO | PART NO. | DESCRIPTION | PRICE | REF. NO. | PART NO. | DESCRIPTION | PRICE |
|--------|----------|--------------------|--------|----------|----------|-------------------|--------|
| 1 | 001-5126 | SPOOL ASSY ALUM | \$6.50 | 43 | 043-5126 | BODY C/O ASSY | \$1.75 |
| 1 | 001-5526 | SPOOL ASSY GRHT | \$4.00 | 44 | 044-4217 | BODY C/O S/C | \$0.35 |
| 2 | 002-5125 | MAIN SHAFT ASSY | \$3.10 | 45 | 045-0710 | HANDLE S/C CAP | \$0.35 |
| 3 | 003-0710 | ROTOR NUT | \$0.35 | 47 | 047-5125 | CLICK METAL | \$0.60 |
| 4 | 004-2610 | S/P W/S | \$0.35 | 48 | 048-5125 | CLICK GEAR | \$0.35 |
| 5 | 005-5121 | ROTOR | \$4.20 | 49 | 049-5125 | B W/S | \$0.35 |
| 6 | 006-5121 | B/H C/C | \$0.35 | 50 | 050-5125 | D W/S | \$0.35 |
| 7 | 007-4211 | B/H C/O S/C | \$0.35 | 51 | 051-5125 | C W/S | \$0.35 |
| 8 | 008-5121 | BAIL K/L S/P | \$0.35 | 52 | 052-5125 | A W/S | \$0.35 |
| 9 | 009-5121 | BAIL K/L | \$0.35 | 53 | 053-5125 | COIL S/P | \$0.35 |
| 13 | 013-5121 | BAIL S/P | \$0.35 | 55 | 055-5125 | PRESSURE | \$0.35 |
| 14 | 014-5121 | ARM LEVER C/O | \$0.35 | 56 | 056-5125 | DRAG KNOB | \$0.75 |
| 16 | 016-0410 | L-SLIDER S/C | \$0.35 | 57 | 057-5125 | DRAG KNOB S/C | \$0.35 |
| 17 | 017-5121 | ARM LEVER | \$0.60 | 58 | 058-5121 | HANDLE ASSY | \$3.75 |
| 18 | 018-5123 | L-ROLLER COLLAR | \$0.35 | 59 | 059-5121 | SCREW | \$0.35 |
| 19 | 019-5123 | L-ROLLER | \$1.80 | 65 | 065-5121 | A-R-CAM | \$0.60 |
| 20 | 020-4211 | ARM LEVER S/C | \$0.35 | 69 | 069-5121 | A-R-LEVER S/C | \$0.35 |
| 21 | 021-5121 | BAIL ASSY | \$3.00 | 75 | 075-5121 | BEARING PLATE S/C | \$0.35 |
| 23 | 023-5121 | BEARING PLATE | \$0.35 | 85 | 085-5121 | KICK LINK | \$0.35 |
| 24 | 024-2610 | BALL BEARING | \$3.10 | 93 | 024-5121 | BALL BEARING | \$3.10 |
| 25 | 025-5121 | RATCHET | \$0.35 | 145 | 145-5125 | BALANCE | \$0.35 |
| 26 | 026-5121 | PINION | \$2.80 | 146 | 146-5123 | SCREW | \$0.35 |
| 27 | 027-5121 | RETAINER | \$0.35 | 147 | 147-5123 | BALL BEARING | \$3.10 |
| 28 | 028-5125 | O/S HOLDER | \$0.35 | 148 | 148-5121 | BAIL S/P LINK | \$0.35 |
| 29 | 029-5126 | BODY ASSY | \$5.00 | 149 | 149-5121 | BAIL S/P HOLDER | \$0.35 |
| 30 | 030-5121 | A-R-CAM S/P | \$0.35 | 150 | 150-5121 | BEARING HOLDER | \$0.60 |
| 31 | 031-5121 | A-R-LEVER | \$0.35 | 151 | 151-5123 | BEARING | \$0.35 |
| 33 | 033-5125 | CLICK CLAW | \$0.35 | 152 | 152-5121 | CARRIAGE S/C | \$3.00 |
| 34 | 007-4214 | CLICK CLAW S/P | \$0.35 | 153 | 153-5121 | PAWL | \$1.10 |
| 35 | 035-5121 | A-R-CLAW S/P | \$0.35 | 154 | 154-5121 | PAWL COLLAR | \$0.35 |
| 36 | 036-5121 | DRIVE GEAR | \$1.95 | 155 | 155-5121 | PAWL W/S | \$0.35 |
| 37 | 037-5121 | O/S GEAR | \$0.35 | 156 | 156-5121 | STOP RING | \$0.35 |
| 38 | 038-4214 | DRIVE GEAR ADJ W/S | \$0.35 | 157 | 157-5121 | SEAL | \$0.35 |
| 39 | 039-5121 | A-R-CLAW | \$0.35 | 159 | 159-5126 | REAR COVER | \$0.35 |
| 40 | 040-5125 | DRAG LEAF S/P | \$0.35 | 160 | 160-5125 | REAR C/O S/C | \$0.35 |
| 41 | 041-5121 | A-R-CLAW S/C | \$0.35 | 161 | 161-5123 | CLICK PIN | \$0.35 |

PARTS LIST FOR SILSTAR :

LX35

* When ordering parts for your Silstar reel, be sure to include the following:

- 1) Complete Model Number and Letter. Example: BT 80 B
- 2) Specify Color for FX, BT,CX,ER,EC series reels.