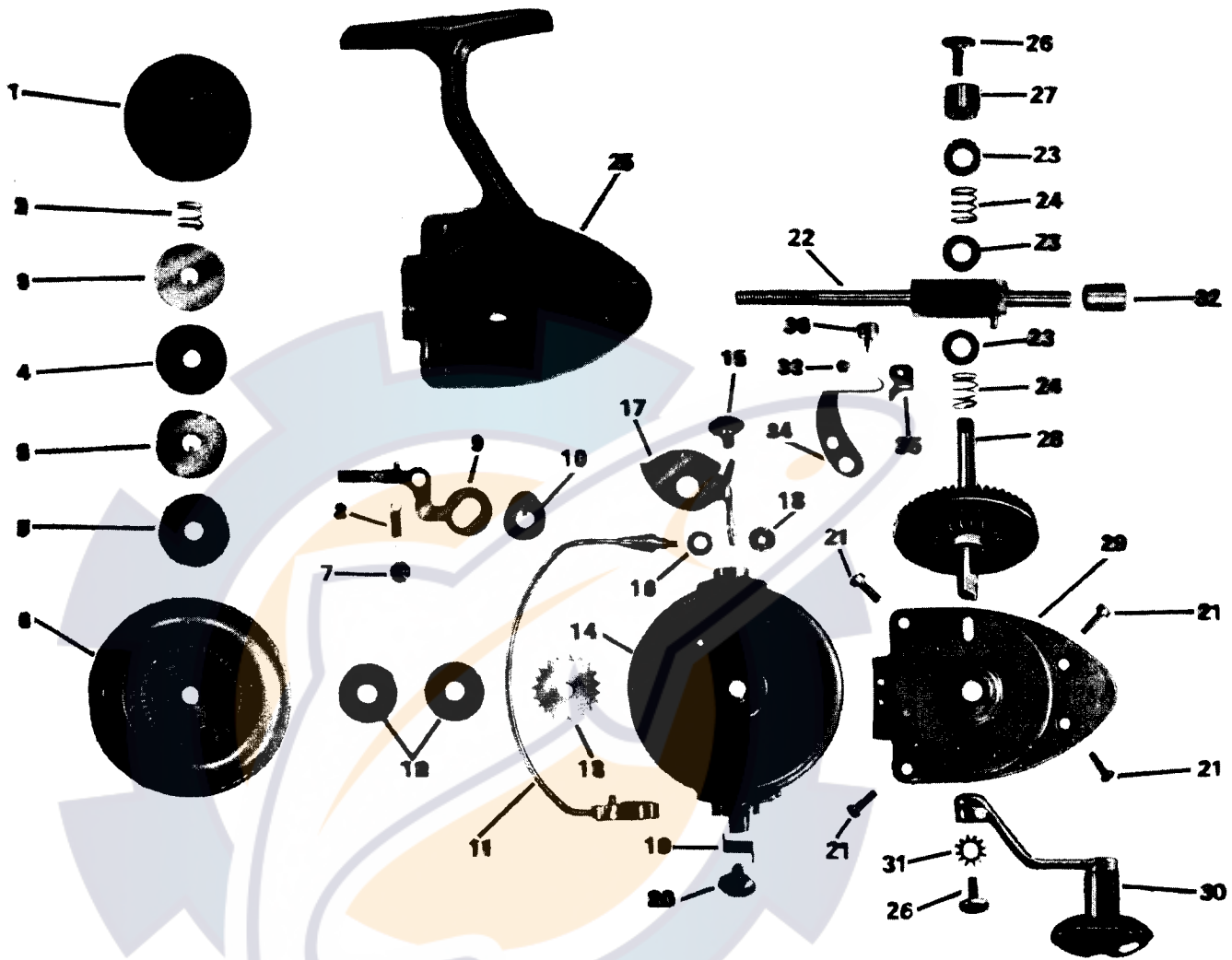


404 SPINNING REEL



Part No.	Name	Price
404-1	Drag Nut Assembly	\$.55
404-2	Drag Nut Spring	.10
404-3	Metal Drag Washer (2)	.10
404-4	Neoprene Drag Washer	.10
404-5	Leather Drag Washer	.10
404-6	Spool Assembly	3.25
404-7	Bail Release Arm Screw	.15
404-8	Bail Release Arm Spring	.10
404-9	Bail Release Arm	.35
404-10	Main Shaft Cam	.15
404-11	Bail Wire Assembly	1.80
404-12	Fiber Washer (2)	.10
404-13	Click Ratchet	.30

Part No.	Name	Price
404-14	Rotating Cup and Gear Assembly	4.40
404-15	Cam Plate Screw	.20
404-16	Bail Wire Roller	.20
404-17	Cam Plate	.70
404-18	Bail Wire Retaining Nut	.15
404-19	Bail Wire Recoil Spring	.20
404-20	Bail Wire Retaining Screw	.20
404-21	Frame Screw (4)	.10
404-22	Trunion Shaft Assembly	1.75
404-23	Trunion Washer (3)	.10
404-24	Trunion Spring (2)	.10
404-25	Right Frame Assembly	2.75

Part No.	Name	Price
404-26	Crank Handle Screw (2)	.15
404-27	Crank Shaft Cap	.20
404-28	Main Gear and Crank Shaft Assembly	1.50
404-29	Left Frame Assembly	2.20
404-30	Crank Handle Assembly	1.00
404-31	Lock Washer	.10
404-32	Rear Support Bearing	.15
404-33	Anti-Reverse Spring Screw	.10
404-34	Anti-Reverse Spring	.15
404-35	Anti-Reverse Ratchet Dog	.15
404-36	Anti-Reverse Button	.15

DISASSEMBLY, GREASING AND OILING

Unscrew Drag Nut Assembly (404-1). Remove Metal Drag Washers (404-3), Neoprene Drag Washer (404-4) and Leather Drag Washer (404-5), noting order. The Spool Assembly (404-6) and Fiber Washers (404-12) may then be removed. Unscrew Click Ratchet (404-13). To remove Crank Handle Assembly (404-30), unscrew Crank Handle Screw (404-26) and remove Lock Washer (404-31). Remove Crank Shaft Cap (404-27) and associated Crank Handle Screw. Carefully remove the four Frame Screws (404-21) and holding the Rotating Cup and Gear Assembly (404-14) mated with the Left Frame Assembly (404-29), remove the Right Frame Assembly (404-25). Note the relationship of the Main Gear and Crank Shaft Assembly (404-28), Trunion Springs (404-24), Trunion Washers (404-23), Trunion Shaft Assembly (404-22), Rear Support Bearing (404-32)

and Rotating Cup and Gear Assembly. These parts may then be removed for cleaning and oiling.

Wash all parts in warm fresh water. Soda or a mineral solvent may be used to clean excessively dirty parts. Lubricate all bearings with a good light machine oil. Lubricate the gears and eccentric groove in the main gear with a good grease. South Bend Reel Oil and Reel Lube are especially designed for this purpose and should be used for best results.

Reassemble the parts in reverse order. Be certain that the pin extending from the trunion is properly fitted in the eccentric groove; also that the bronze bearings are located properly in position.

NOTE: To mount the Crank Handle Assembly on the opposite side, interchange the Crank Handle Assembly and Lock Washer with Crank Shaft Cap.

NOTE: When ordering parts, give reel part name, reel number and model.