

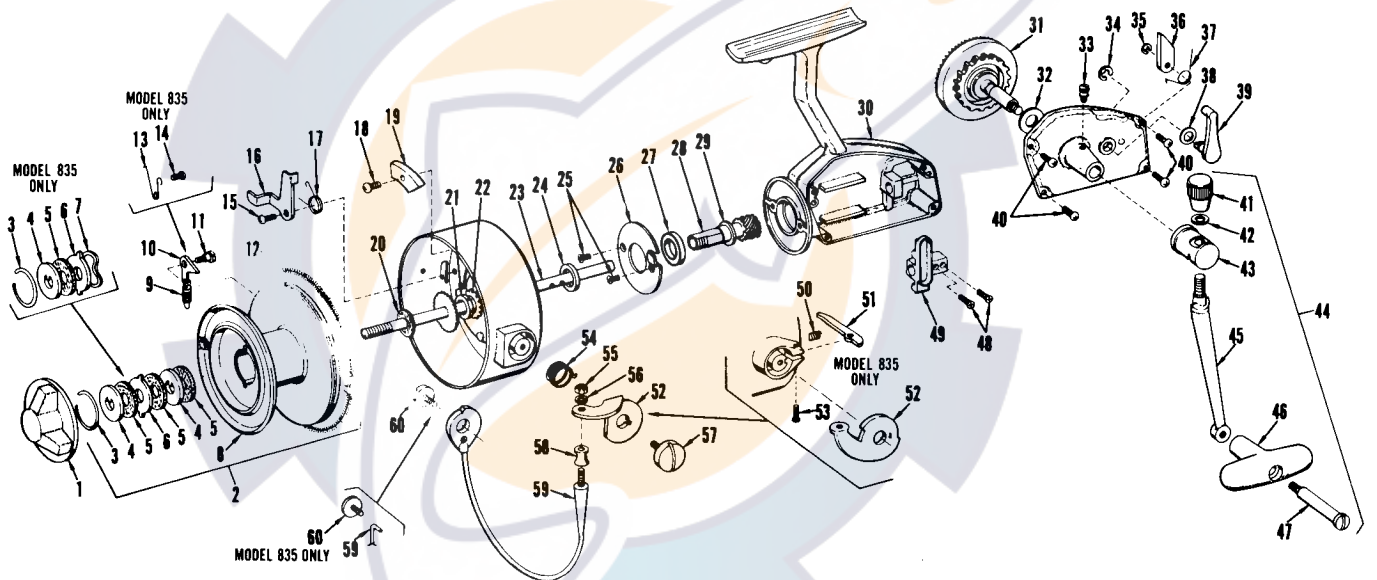
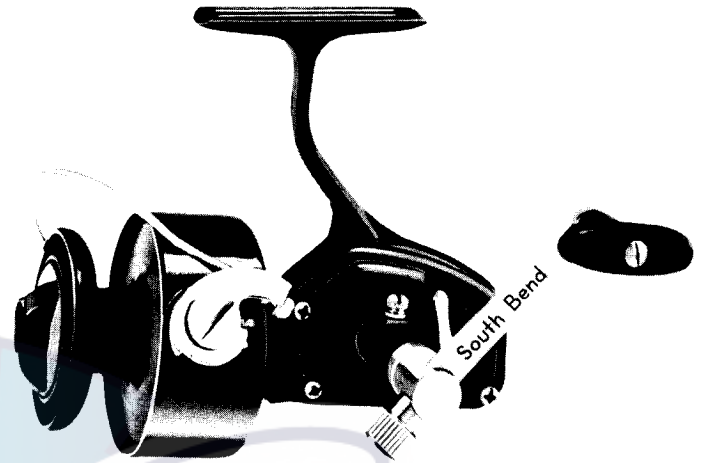


**GLADDING**  
**South Bend Tackle Co., Inc.**  
 Division of **GLADDING** Corporation

**835**

3-210-835

**SPINNING REEL**



Detail No.	Part Name	Part No.	Price	Detail No.	Part Name	Part No.	Price
1	Drag Nut	SPA84	.75	34	Lever Retaining Clip	96	.10
2	Spool (complete w/internal parts)	SPA86	3.50	35	Pawl Retaining Clip	97	.10
3	Retaining Ring	SPA88	.10	36	Non-Reverse Pawl	98	.15
4	Drag Keyed Washer	SPA90	.15	37	Pawl Spring	99	.15
5	Drag Fiber Washer	92	.15	38	Non-Reverse Lever Washer	SPC1	.10
6	Drag Eared Washer	SPA94	.15	39	Non-Reverse Lever	SPC16	.25
7	Tension Washer	SPA96	.15	40	Cover Plate Screws (4 req'd.)	SPC3	.10
8	Spool	SPA98	2.75	41	Crank Lock Nut	4	.35
12	Line Guard	SPB64	.15	42	Crank Lock Washer	5	.10
13	Click Spring	SPB66	.25	43	Crank Mounting Nut	6	.65
14	Click Spring Screw	SPB67	.10	44	Crank Assembly	7	2.75
18	Counter Balance Screw	SPB70	.10	45	Crank Arm	9	.70
19	Counter Balance	SPB71	.30	46	Crank Handle	11	.50
20	Spool Washer	SPB73	.10	47	Crank Handle Screw	13	.45
21	Pickup Housing Nut	SPB74	.15	48	Level Wind Bracket Screws	15	2@.10
22	Lock Washer	76	.10	49	Level Wind Bracket	17	.30
23	Main Shaft	78	.80	50	Trip Lever Spring	19	.10
24	Pinion Washer — Thick	80	.15	51	Trip Lever	20	.25
25	Bearing Plate Screws	82	2@.10	52	Bail Bracket	21	.30
26	Bearing Plate	SPB83	.30	53	Lever Pivot Screw	SPC23	.10
27	Ball Bearing	SPB85	2.50	54	Bail Bracket Spring	24	.25
28	Pinion Gear	87	1.65	55	Line Roller Nut	25	.15
29	Pinion Washer — Thin	89	.15	56	Lock Washer	36	.10
30	Frame	91	3.00	57	Bail Bracket Screw	28	.65
31	Drive Gear	93	.90	58	Line Roller	29	.25
32	Drive Gear Washer	94	.10	59	Bail Wire Assembly	31	1.05
33	Oiling Screw	95	.26	60	Bail Retaining Screw	33	.60