

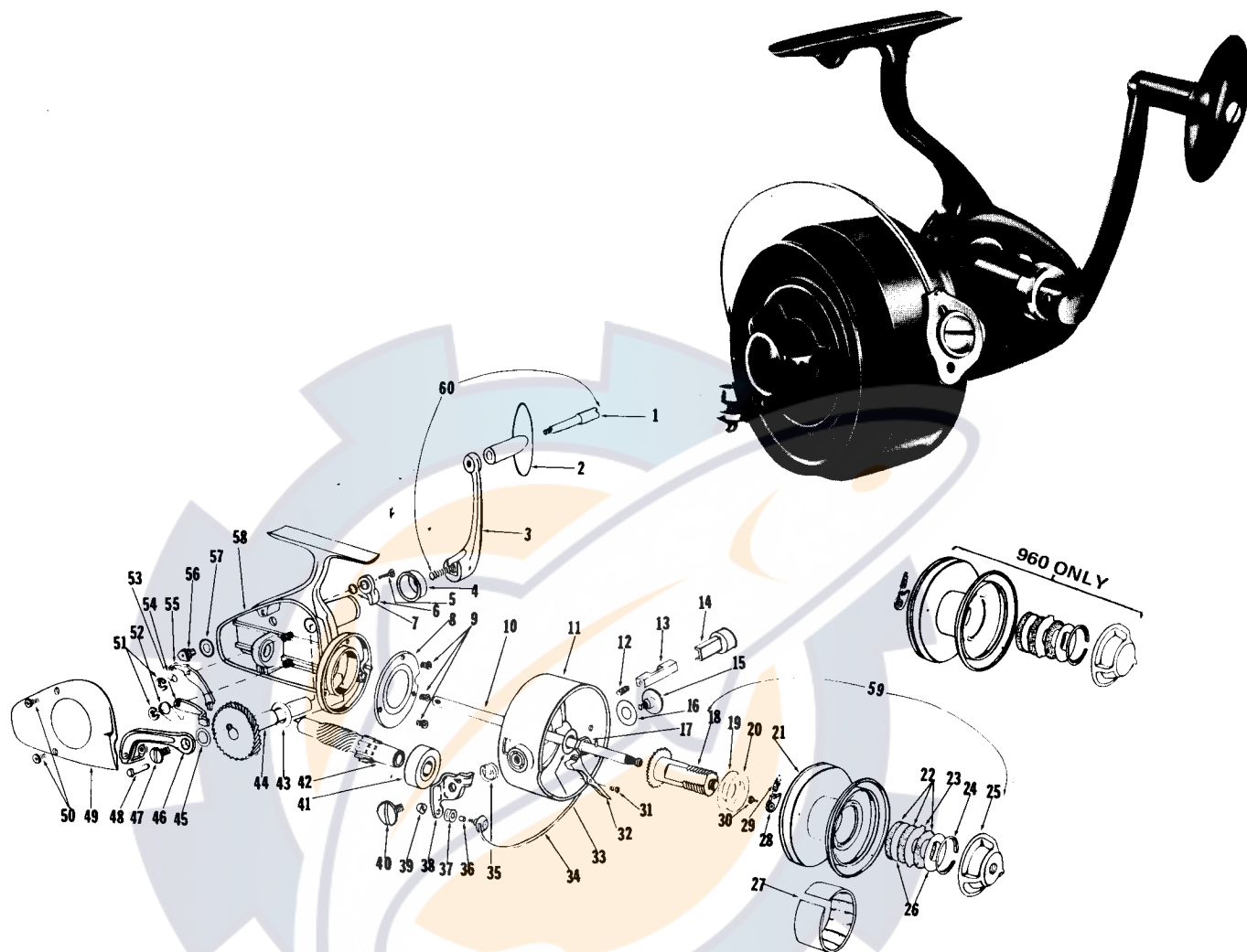


**GLADDING**  
**South Bend Tackle Co., Inc.**  
 Division of GLADDING Corporation

**960**

3-220-960

**SPINNING REEL**



Detail No.	Part Name	Part No.	Price	Detail No.	Part Name	Part No.	Price
1	Crank Handle Pin	SP3	.60	33	Pick-up housing lock washer	SPA1	.20
2	Crank Handle	SP6	.60	34	Pick-up ball — with roller bearing & trip bracket	SPA5	3.00
3	Crank Arm	SP10	1.90	35	Bail bracket spring	SPA8	.30
4	Crank Arm Cover	SP14	.70	36	Line roller sleeve	SPA10	.65
5	Non Reverse lever screw	SP15	.10	37	Line roller	SPA12	.90
6	Non reverse lever	SP16	.20	38	Trip bracket	SPA16	1.05
7	Non reverse bushing	SP17	.20	39	Roller lock nut	SPA17	.40
8	Ball bearing retaining Plate	SP20	.20	40	Bail bracket screw	SPA20	.85
9	Ball bearing plate screws	SP21	.20	41	Ball bearing	SPA23	1.00
10	Main shaft assembly	SP25	2.75	42	Pinion gear	SPA26	5.65
11	Pick-up housing	SP29	4.75	43	Drive gear washer	SPA29	.20
12	Plunger spring	SP30	.10	44	Drive gear	SPA33	4.00
13	Plunger	SP34	.50	45	Washer	SPA37	.20
14	Plunger sleeve	SP38	.40	46	Level wind lever for 935 & 960 bracket attached	SPA41	.90
15	Trip bracket screw	SP41	.65	47	Level wind lever screw	SPA45	.35
16	Trip bracket washer	SP44	.20	48	Level wind pin	SPA48	.20
17	Pick-up housing nut	SP47	.25	49	Cover plate	SPA52	1.70
18	Spool Shaft	SP51	.85	50	Cover plate screws	SPA53	2@.15
19	Spool washer (thick)	SP54	.10	51	Snap rings	SPA54	2@.15
20	Spool washer (thin)	SP57	.10	52	Non reverse pawl spring	SPA57	.10
21	Spool	SP61	4.85	53	Non reverse pawl	SPA60	.30
22	Drag washers	SP64	.40	54	Non reverse cam spring	SPA63	.10
23	Drag eared washer	SP67	.15	55	Non reverse arm	SPA66	.25
24	Retaining ring	SP70	.10	56	Non reverse cam	SPA69	.30
25	Drag button	SP73	1.25	57	Non reverse washer	SPA70	.10
26	Drag keyed washer	SR76	.30	58	Frame	SPA75	6.30
27	Spool arbor	SP80	.40	59	Spool — complete with internal parts	SPA79	7.50
28	Click pawl	SP84	.15	60	Crank handle assembly	SPA83	4.75
29	Click spring	SP88	.10				
30	Click pawl screw	SP89	.20				
31	Bail stop screw	SP93	.15				
32	Bail stop	SP97	.40				