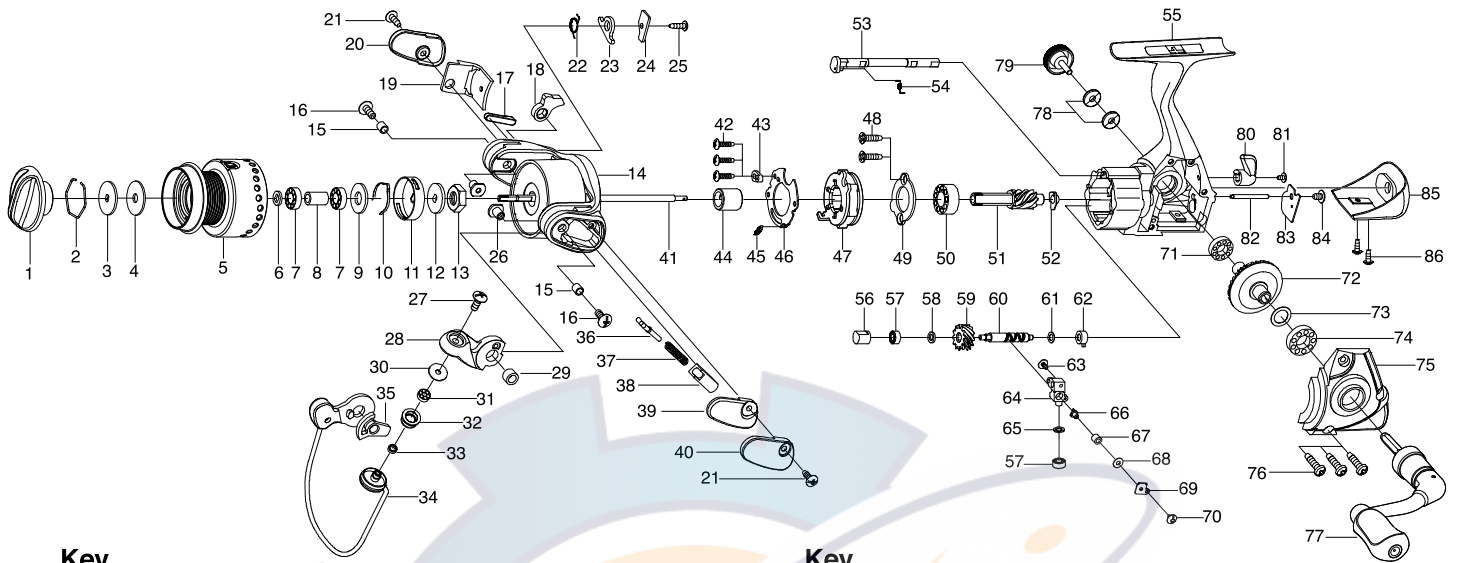




## SPINNING REEL LIBRA SL2500/3000



Key NO.	Parts No.	Parts name	Key NO.	Parts No.	Parts name
2-5	2YT-427-01	SPOOL TOTAL ASSEMBLY	48	2E1-067-01	F26-090 SCREW
1	2YD-024-07	DRAG KNOB ASSEMBLY	49	2F5-193-01	BEARING RETAINER
2	2E4-009-01	DRAG WASHER RETAINER	50	2Z1-003-07	714-5 BALL BEARING
3	2W2-013-01	KEY WASHER	51	2G2-036-01	PINION GEAR
4	2W1-052-01	050-187 WASHER	52	2C2-033-01	PINION GEAR BUSH
5	2YS-270-01	SPOOL ASSEMBLY	53	2A2-009-01	ANTI-REVERSE CAM
6	2W2-016-01	KEY WASHER	54	2Q3-009-01	ANTI-REVERSE SPRING
7	2Z1-013-07	610-3 BALL BEARING	55	2YB-130-05	BODY ASSEMBLY
8	2C1-037-01	BEARING SPACER	56	2C2-036-01	WORM SHAFT BUSH
9	2W1-053-01	080-185 WASHER	57	2Z1-014-07	306-2.5 BALL BEARING
10	2L3-014-01	CLICK LEAF SPRING	58	2W1-058-01	030-050 WASHER
11	2F8-013-01	CLICK LEAF SPRING HOLDER	59	2G3-012-01	WORM SHAFT GEAR
12	2W2-015-01	KEY WASHER	60	2M4-001-02	WORM SHAFT
13	2E3-007-02	ROTOR NUT	61	2W1-058-02	030-050 WASHER
14	2YR-057-03	ROTOR ASSEMBLY	62	2C2-035-01	WORM SHAFT BUSH A
15	2C1-069-01	COLLAR SPACER	63	2E2-013-02	B20M-060 SCREW
16	2E2-018-01	B30M-080 SCREW	64	2M1-023-01	OSCILLATING SLIDER
17	2R5-102-01	BAIL TRIP PLATE	65	2W1-058-03	030-050 WASHER
18	2R5-104-01	BAIL TRIP LEVER A	66	2M5-001-01	LINE GUIDE PIN
19	2R4-107-03	BAIL TRIP COVER SPACER	67	2C2-034-01	LINE GUIDE PIN BUSH
20	2F5-207-02	BAIL TRIP COVER	68	2W1-059-01	020-049 WASHER
21	2E1-016-02	B26-080 SCREW	69	2F5-048-01	OSCILLATING SLIDER COVER
22	2Q3-056-01	BAIL TRIP LEVER SPRING	70	2E2-022-01	B20M-030 SCREW
23	2R5-103-01	BAIL TRIP LEVER	71	2Z1-009-07	711-3 BALL BEARING
24	2W5-037-01	SPACER	72	2G1-003-01	DRIVE GEAR
25	2E1-048-01	B22-080 SCREW	73	2W1-019-00	071-103 WASHER
26	2E3-040-01	SHAFT NUT	74	2Z1-002-07	714-3.5 BALL BEARING
27	2E2-018-01	B30M-080 SCREW	75	2B2-024-05	BODY COVER
28	2R2-035-03	BAIL ARM	76	2E1-005-02	A26-120 SCREW
29	2C2-082-01	BAIL ARM BUSH	77	2YH-202-02	HANDLE TOTAL ASSEMBLY
30	2C1-034-01	LINE ROLLER COLLAR	78	2W1-004-01	029-080 WASHER
31	2Z1-012-07	407-2.5 BALL BEARING	79	2H6-001-13	HANDLE SCREW CAP
32	2R6-020-02	LINE ROLLER	80	2A1-022-14	ANTI-REVERSE LEVER
33	2C2-032-01	LINE ROLLER BUSH	81	2E2-013-02	B20M-060 SCREW
34	2YL-093-03	BAIL ASSEMBLY	82	2P1-015-01	OSCILLATING SLIDER PIN
35	2F6-033-03	HOLDING PLATE	83	2F5-049-01	WORM SHAFT COVER
36	2R5-101-01	BAIL TRIP SHAFT	84	2E1-036-01	B26-040 SCREW
37	2Q1-075-01	BAIL SPRING	85	2YN-003-03	NAMEPLATE ASSEMBLY
38	2C2-081-01	BAIL SPRING GUIDE	86	2E1-020-02	B22-055 SCREW
39	2R4-106-01	BAIL SPRING COVER SPACER	SL3000	SPECIAL PARTS	
40	2F5-206-02	BAIL SPRING COVER	2-6	2YT-428-01	SPOOL TOTAL ASSEMBLY
41	2M3-028-01	MAIN SHAFT	5	2YS-271-01	SPOOL ASSEMBLY
42	2E1-029-01	B22-090 SCREW	14	2YR-058-03	ROTOR ASSEMBLY
43	2F8-079-01	ANTI-REVERSE SPRING ANCHOR	19	2R4-108-03	BAIL TRIP COVER SPACER
44	2A4-021-01	ONE-WAY CLUTCH INNER TUBE	23	2R5-105-01	BAIL TRIP LEVER
45	2Q2-016-01	SPRING	34	2YL-094-03	BAIL ASSEMBLY
46	2F5-192-01	ROLLER CLUTCH RETAINER	55	2YB-130-06	BODY ASSEMBLY
47	2YZ-014-01	ONE-WAY CLUTCH BEARING ASSEMBLY			