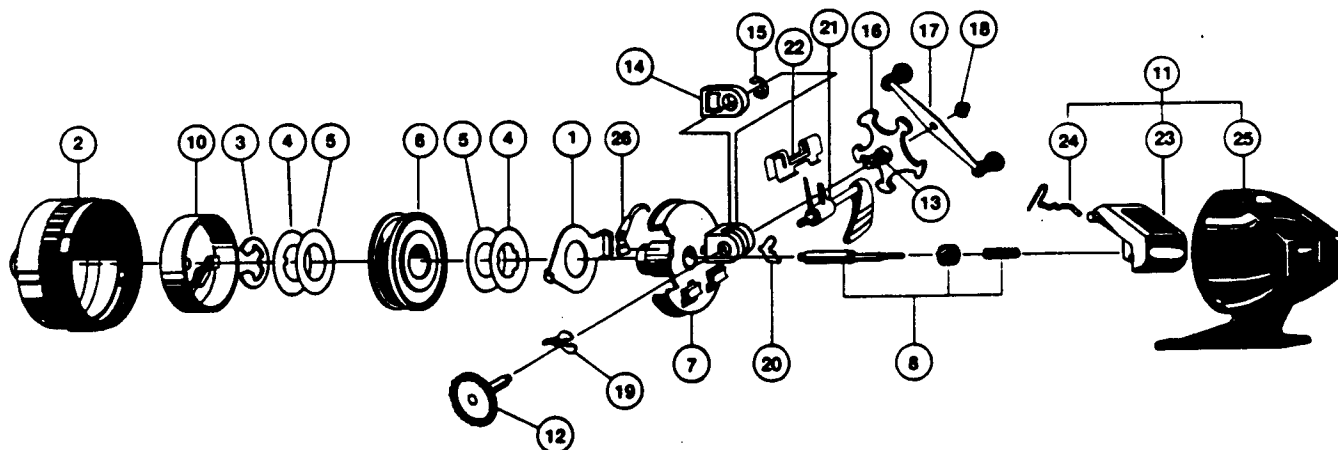


ZEBCO CATFISH SPECIAL 20/30



Key No.	Part No.	Description	Price
..1	KY027-1	Clutch Ring	1.03
2	KY324	Front Cover Assy	3.20
3	GZ034-1	Spool Clip	.58
4	CJ040-1	Spool Washer	.98
5	CJ108-1	Drag Washer	.39
6	KY321	Spool Assy	6.45
7	KY301	Body Assy	3.25
8	KY315-3	Centershaft Assy	2.90
10	KY310-1	Spinnerhead Assy	5.52
11	KY323	Backcover Assy	1.20
12	KY308	Crankshaft Assy	1.65
13	KY026-5	Crankshaft Bushing	2.90
14	KY054-1	Slide Drag Actuator	1.31
15	JY121	Retainer Clip	.39
16	JY032-1	Drag Adjustment Star	.45
17	KE318-5	Crankhandle Assy	1.75
18	AZ003	Cranknut	.58
19	JY061	Anti-Reverse Actuator	.45
20	KY060	Anti-Reverse Pawl	.30
21	KY002	Anti-Reverse Switch	.10
22	KY046	Anti-Reverse Switch Retainer	.65
23	KY009	Thumb Stop	1.03
24	KY038	Thumb-Stop Spring	.76
25	KY023	Back Cover	1.00
26	GZ034-1	Retainer Clip	.58

Important: Should the anti-reverse pawl (11) drop out while changing spool, be sure to place it back into body assembly with largest flange pointing toward base of reel as shown in diagram. Make sure the arm of the pawl actuator (19) rests in the center of the anti-reverse pawl to reassemble.

Prices subject to change without notice. Prices do not include postage and handling.

PLEASE ORDER BY PART NUMBER

Rev. 6/95

Zebco Division Brunswick Corporation, Box 270, Tulsa, OK 74101 USA 918-836-5581

