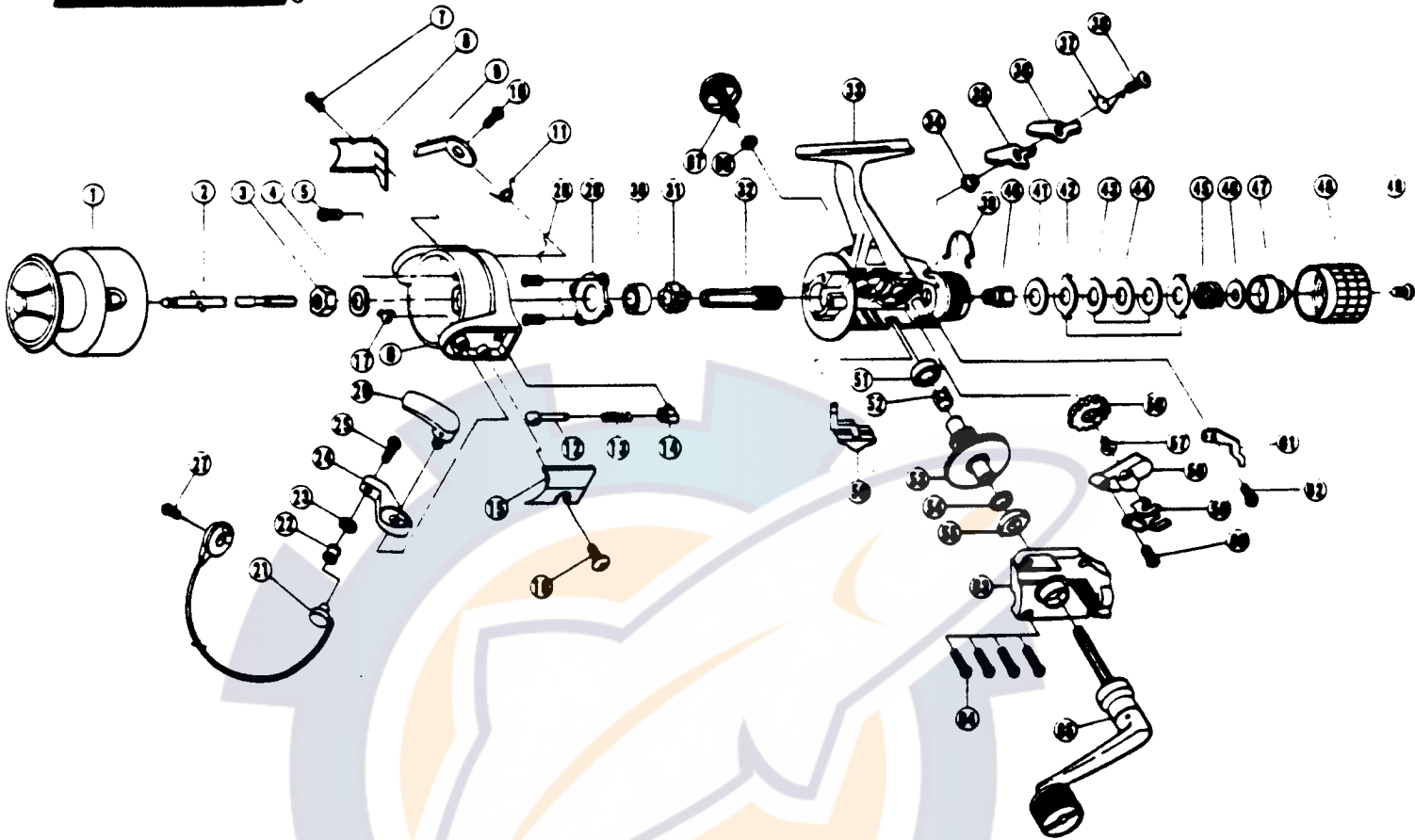


ZEBCO PS40



KEY PART NO. NO.	DESCRIPTION	PRICE	KEY PART NO. NO.	DESCRIPTION	PRICE
1 TL321	SPOOL ASSY.	6.08	36 TLO63	STOPPER 'B'	1.13
2 TL315	MAIN SHAFT ASSY.	3.09	37 TLO61	STOPPER SPRING	.57
3 TLO06	ROTOR NUT	1.49	38 RLO83	STOPPER SCREW	.62
4 TLO65	ROTOR RETAINER WASHER	.62	39 TLO33	DRAG CLICK CLAW	1.13
5 RLO94	ROTOR NUT LOCK SCREW	.62	40 TLO75	METAL	1.60
6 TLO09	ROTOR	4.64	41 TLO38	DRAG 'B' WASHER - 1	.57
7 RLO85	COVER/CLICK CLAW SCREW	.62	42 TLO30	DRAG 'A' WASHER	.62
8 TLO24	KICK LEVER COVER	.62	43 TLO39	DRAG 'B' WASHER - 2	.62
9 TLO19	KICK LEVER	1.29	44 TLO66	DRAG 'D' WASHER	.62
10 RLO37	KICK LEVER SCREW	.57	45 TLO43	DRAG COIL SPRING	1.29
11 TLO49	KICK LEVER SPRING	.57	46 TLO46	DRAG ADJUSTING WASHER	.62
12 TLO31	SPRING SHAFT	.52	47 TLO29	DRAG NUT	.57
13 TLO22	BAIL SPRING	.62	48 TLO32	DRAG CAP	3.24
14 TLO20	SPRING HOLDER	.62	49 RLO79	DRAG CAP SCREW	.57
15 TLO87	BAIL SPRING COVER	.52	50 TLO59	STOPPER LEVER	.57
16 RLO85	COVER/CLICK CLAW SCREW	.62	51 RLO13	BODY/BODY COVER BUSHING	.62
17 RLO34	E-CLIP	.62	52 TLO86	SILENT CAM	.62
20 RL115	TRIP LEVER	1.49	53 TLO12	DRIVE GEAR	2.06
21 TL347	BAIL ASSY.	6.28	54 RLO26	DRIVE GEAR ADJ. WASHER	.52
22 TLO04	LINE ROLLER	2.06	55 RLO13	BODY/BODY COVER BUSHING	.62
23 TLO17	BAIL COLLAR	1.13	56 TLO53	O/S PLATE GEAR	1.03
24 TLO07	ARM LEVER	1.13	58 TLO81	O/S SLIDER	1.49
25 SL108	BAIL SCREW	.62	59 TLO78	SLIDER STOPPER	1.03
27 TLO51	BAIL HOLDER SCREW	.62	60 TL161	SLIDER STOPPER SCREW	.52
28 TLO80	BEARING PLATE SCREW	.62	61 TLO68	CLICK CLAW	.62
29 TLO40	BEARING PLATE	.57	62 RLO85	COVER/CLICK CLAW SCREW	.62
30 TLO28	BALL BEARING	7.73	63 TLO23	BODY COVER	5.30
31 TLO60	RATCHET GEAR	2.42	64 SLO57	BODY COVER SCREW	.62
32 TLO11	PINION GEAR	5.25	65 TL318	HANDLE ASSY.	7.73
33 TLO01	BODY	7.47	66 SLO76	HANDLE SCREW CAP WASHER	.52
34 RLO91	STOPPER BUSHING	.57	67 PLO73	HANDLE SCREW CAP	1.60
35 TLO64	STOPPER 'A'	1.03	68 TLO82	KICK LEVER GUIDE	1.08

Prices subject to change without notice. Prices do not include postage and handling.

PLEASE ORDER BY PART NUMBER

Rev. 11/90

Zebco Division Brunswick Corporation, Box 270, Tulsa, OK 74101 USA 918-638-6561

