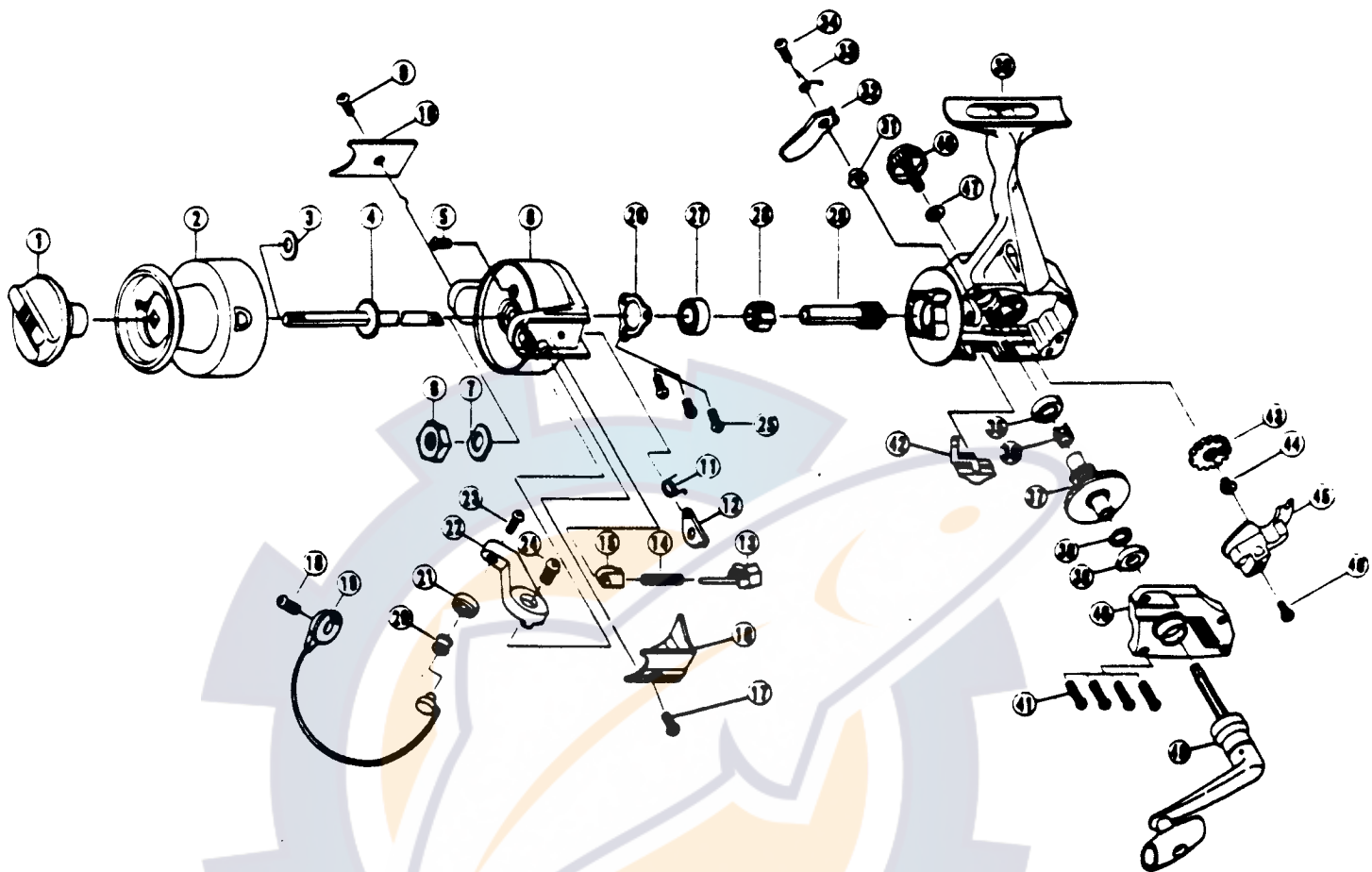


ZEBCO PS70



KEY PART NO. NO.	DESCRIPTION	PRICE	KEY PART NO. NO.	DESCRIPTION	PRICE
1 U/L332	DRAG KNOB ASSY.	3.14	27 U/L028	BALL BEARING	8.03
2 VL321	SPOOL ASSY.	7.42	28 U/L060	RATCHET	2.94
3 U/L046	SPOOL ADJ. WASHER	.62	29 U/L011	PINION GEAR	6.18
4 U/L315	MAIN SHAFT ASSY.	3.19	30 V/L001	BODY	8.24
5 U/L094	ROTOR NUT LOCK SCREW	.62	31 U/L091	STOPPER BUSHING	.67
6 U/L006	ROTOR NUT	1.03	32 U/L063	STOPPER	1.13
7 U/L065	ROTOR RETAINER WASHER	.67	33 U/L061	STOPPER SPRING	1.03
8 V/L009	ROTOR	8.24	34 U/L083	STOPPER SCREW	.67
9 U/L085	KICK LEVER COVER SCREW	.67	35 U/L013	BODY BUSHING	1.03
10 U/L024	KICK LEVER COVER	.67	36 U/L086	SILENT CAM	.62
11 V/L049	KICK LEVER SPRING	.62	37 U/L012	DRIVE GEAR	3.30
12 U/L019	KICK LEVER	1.29	38 U/L026	DRIVE GEAR ADJ. WASHER	1.13
13 U/L031	SPRING SHAFT	.67	39 U/L013	BODY BUSHING	1.03
14 U/L022	BAIL SPRING	1.03	40 V/L023	BODY COVER	3.14
15 U/L020	SPRING HOLDER	.62	41 U/L057	BODY COVER SCREW	.67
16 V/L087	BAIL SPRING COVER	.62	42 U/L059	STOPPER LEVER	1.03
17 U/L085	KICK LEVER COVER SCREW	.67	43 U/L053	OSCILLATING GEAR	2.16
18 U/L051	BAIL HOLDER SCREW	.67	44 U/L035	O/S GEAR SCREW	1.24
19 VL347	BAIL ASSY.	6.18	45 U/L081	O/S	2.16
20 U/L004	LINE ROLLER	2.01	46 U/L161	O/S SCREW	.62
21 U/L017	BAIL COLLAR	1.49	47 U/L076	HANDLE CAP WASHER	.52
22 U/L007	ARM LEVER	1.03	48 U/L073	HANDLE SCREW CAP	1.49
23 U/L108	BAIL SCREW	.67	49 VL318	HANDLE ARM	5.41
24 U/L107	ARM LEVER SCREW	.67			
25 U/L080	BEARING PLATE SCREW	.62			
26 U/L040	BEARING PLATE	1.03			

Prices subject to change without notice. Prices do not include postage and handling.

PLEASE ORDER BY PART NUMBER

Rev. 11/90

Zebco Division Brunswick Corporation, Box 270, Tulsa, OK 74101 USA 918-636-6681

