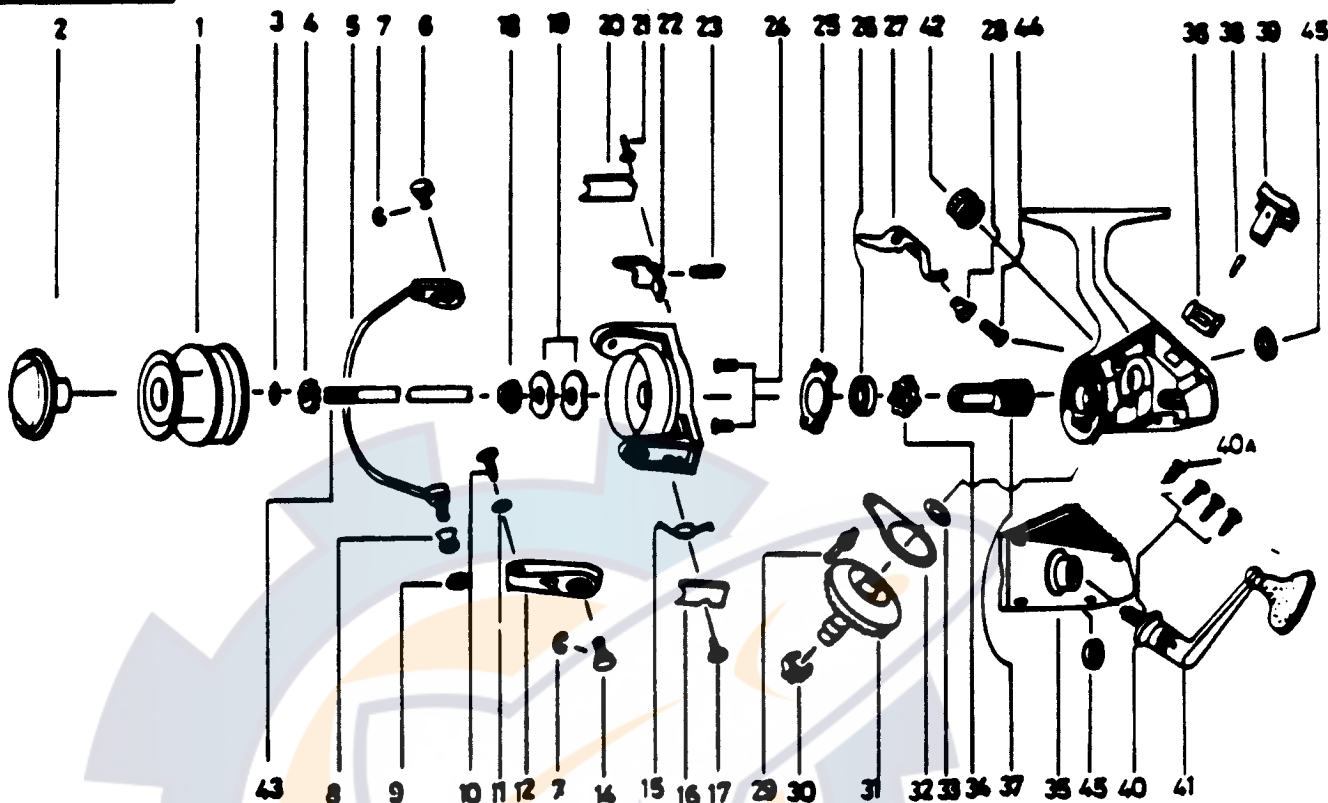


ZEBCO PSG2



KEY PART NO. NO.	DESCRIPTION	PRICE	KEY PART NO. NO.	DESCRIPTION	PRICE
1	MK321 SPOOL ASBY.	5.68	26	LK028 BEARING	9.59
2	MK050 DRAG KNOB ASBY.	4.02	27	LK063 ANTI-REVERSE CLAM	1.39
3	LK030 SPOOL ADJ. WASHER	.64	28	NS014 A/R CLAM BUSHING	.92
4	LK066 CLICK GEAR	.85	29	NS081 OSC. SLIDER PIN	2.09
5	NS347 BAIL ARM ASBY.	4.02	30	NS086 SLIDING SPRING	.85
6	NS044 BAIL HOLDER PIN	1.14	31	NS012 DRIVE GEAR	4.87
7	NS002 E-CLIP	.29	32	NS025 OSCILLATING SLIDER	2.98
8	LK004 LINE ROLLER	2.41	33	NS026 DRIVE GEAR ADJ. WENR	.46
9	NS017 BAIL COLLAR	1.14	34	NS040 RATCHET GEAR	2.87
10	NS108 BAIL SCREW	.58	35	MK323 BODY COVER	5.46
11	NS102 BAIL WASHER	.29	36	NS090 A/R LVR. PLATE SPR.	1.14
12	NS007 ARM LEVER	1.14	37	LK011 PINION GEAR	4.55
14	NS043 ARM LEVER PIN	1.32	38	NS091 A/R LVR. PIN	.46
15	NS022 BAIL SPRING	.92	39	NS059 ANTI-REVERSE LEVER	.92
16	NS087 BAIL SPRING COVER	1.03	40	LK057 BODY COVER SCREW	.91
17	NS085 BAIL SPRING CVR SCR	.52	40	NS057 BODY COVER SCREW	.69
18	NS006 ROTOR NUT	.92	41	MK318 HANDLE ASBY.	8.14
19	NS065 ROTOR KEY. WASHER	.69	42	LK073 HANDLE SCREW CAP	1.98
20	NS024 KICK LEVER COVER	.98	43	LK315 MAIN SHAFT	4.02
21	NS037 KICK LVR CVR SCR	.52	44	NS089 A/R CLAM SCREW	.29
22	NS019 KICK LEVER	1.61	45	NS013 BODY BUSHING	1.24
23	NS049 KICK LEVER SPRING	.39	47	MK301 BODY	9.16
24	NS080 BEARING PLATE SCREW	1.14	48	NS009 ROTOR	5.90
25	NS040 BEARING PLATE	1.27			

Prices subject to change without notice. Prices do not include postage and handling.

PLEASE ORDER BY PART NUMBER

Rev. 11/80

Zebco Division Brunswick Corporation, Box 276, Toluca, OK 74101 USA 918-886-8881

