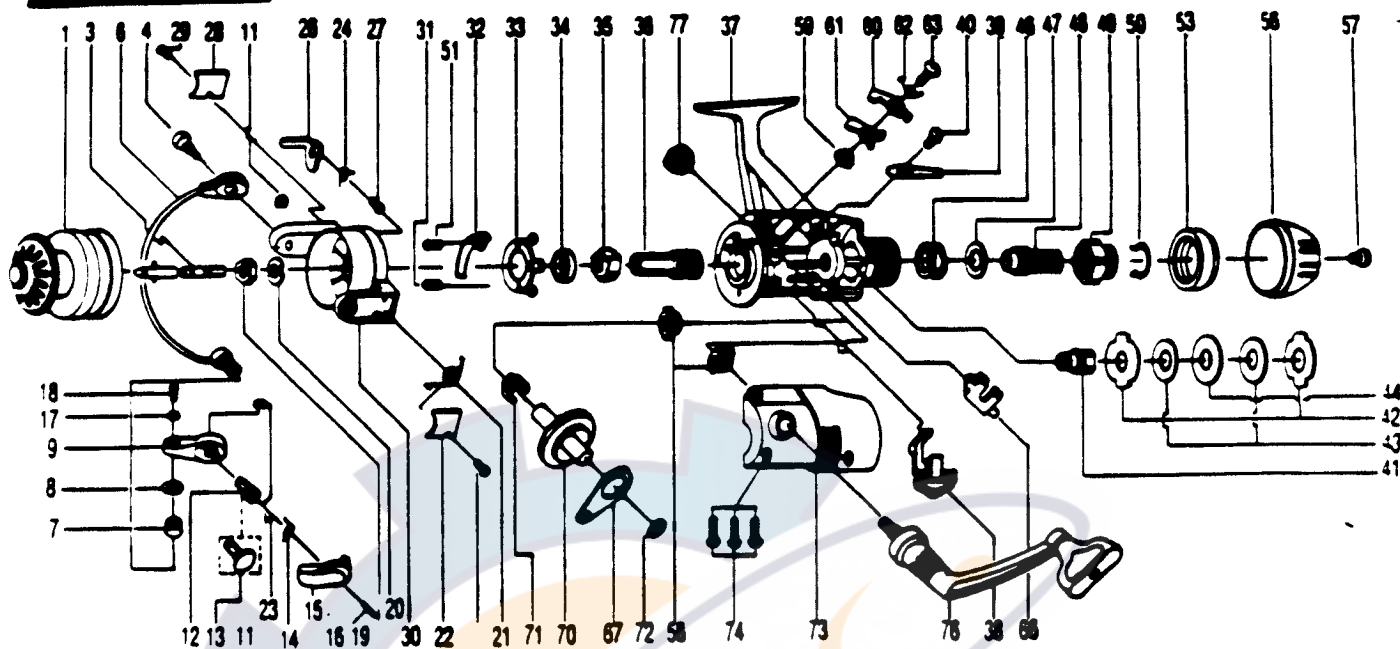


ZEBCO PSG20



KEY PART NO. NO.	DESCRIPTION	PRICE	
1	CT321	SPOOL ASSY.	5.44
3	CT315	MAIN SHAFT	2.46
4	CT044	BAIL HOLDER PIN	1.14
6	CT347	BAIL ARM ASSY.	4.99
7	NB004	LINE ROLLER	1.09
8	NB016	LINE ROLLER BUSH.	.63
9	CT007	ARM LEVER	1.72
11	BT002	E-CLIP	.85
12	CT113	TRIGGER HOLDER	.58
13	CT111	ARM LEVER CAP	1.14
14	BT114	TRIGGER SPRING	.52
15	BT115	TRIGGER	1.43
16	BT116	TRIGGER PIN	.39
17	NB102	BAIL AXLE WASHER	.29
18	NB108	BAIL AXLE SCR	.58
19	VB006	ROTOR NUT	.58
20	BT065	ROTOR RETAINER	.58
21	CT022	BAIL SPRING	.69
22	CT087	BAIL SPRING COVER	.69
23	BT085	BAIL SPR. COVER SCREW	.63
24	CT049	KICK LEVER SPRING	.58
26	CT019	KICK LEVER	1.27
27	BT037	KICK LEVER SCREW	.34
28	RB024	TRIP LVR. CVR.	.63
29	BT085	BAIL SPR. COVER SCREW	.63
30	CT009	ROTOR ASSY.	7.17
31	BT080	BEARING PLATE SCREW	.34
32	CT082	KICK LEVER GUIDE	.85
33	CT040	BEARING PLATE	.85
34	RB028	BALL BEARING	5.73
35	BT060	RATCHET GEAR	1.83
36	CT011	PINION GEAR	3.55
37	CT301	BODY ASSY	10.90
38	CT059	ANTI-REVERSE LEVER	.58
39	CT068	CLICK CLAM	.39

KEY PART NO. NO.	DESCRIPTION	PRICE	
40	BT067	CLICK CLAM SCREW	.29
41	CT104	SLIDER HOLDER	.63
42	CT030	REAR DRAG WASHER "A"	1.27
43	CT039	REAR DRAG WASHER "B"	1.43
44	CT071	REAR DRAG WASHER "D"	1.03
46	CT031	REAR DRAG COIL SPR.	1.14
47	CT046	REAR DRAG ADJ. WSPR.	1.03
48	CT112	REAR DRAG NUT	1.09
49	CT017	SLIDING SCREW	1.14
50	CT033	BACK CLICK CLAM	.39
51	BT182	KICK LEVER GUIDE SCR	.39
53	CT132	REAR DRAG STOPPER	1.49
56	CT032	REAR DRAG CAP	2.00
57	VB079	DRAG SCREW	.92
58	BT013	BODY COVER BUSHING	.69
59	BT014	A/R CLAM BUSHING	.69
60	CT063	A/R CLAM (N)	.75
61	CT064	A/R CLAM (S)	.80
62	CT061	A/R CLAM SPRING	.39
63	BT089	A/R CLAM SCREW	.34
66	BT081	PIN SLIDER	.80
67	BT025	OSCILLATING SLIDER	1.27
70	CT012	DRIVE GEAR	3.55
71	BT086	SLIDING SPRING	.46
72	RB026	CRANE GEAR SHIM	.29
73	CT323	BODY COVER ASSY.	5.44
74	BT057	BODY COVER SCREW	1.14
76	RB318	HANDLE ASSY.	6.19
77	CT073	HANDLE SCREW CAP	.52
79	BT120	ROTOR RET. SPRNG. W/S	.85

*Not shown in diagram
P/Rs between keys 18 & 20

Prices subject to change without notice. Prices do not include postage and handling.

PLEASE ORDER BY PART NUMBER

Rev. 11/80

Zebco Division Brunswick Corporation, Box 270, Tawas, MI 49781 USA 810-630-6881

