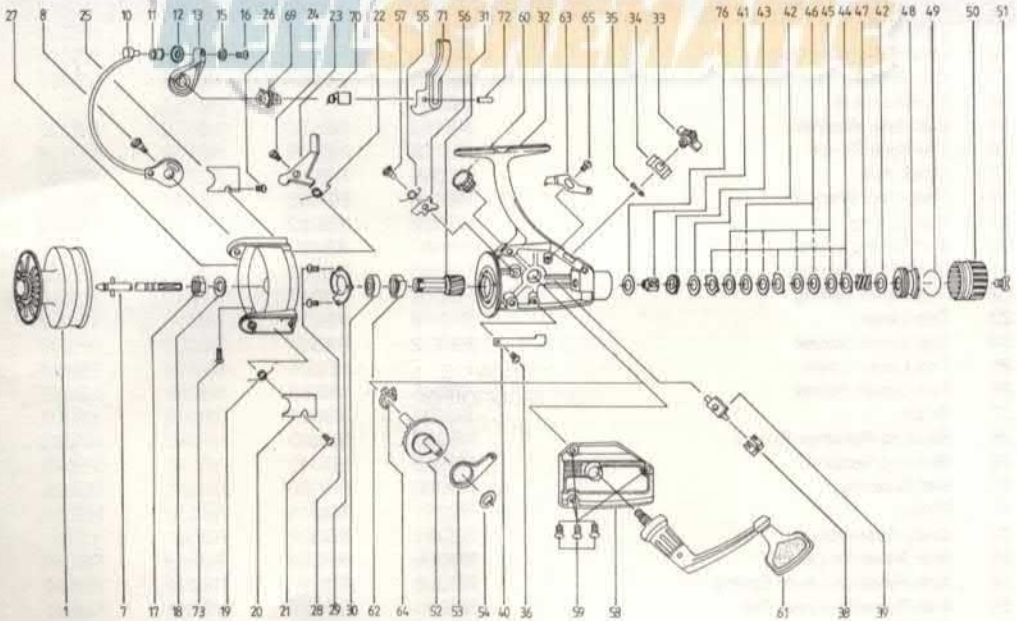




pro
staff™

SPINNING
OWNER'S
MANUAL

MODEL PS10 - PS10CC - PS20 - PS20CC
DIAGRAM



KEY NO.	DESCRIPTION	MODEL PS10	MODEL PS10CC	MODEL PS20	MODEL PS20CC
1	Spool Assembly	SB321	XB321	RB321	YB321
7	Center Shaft Assembly	SB315	SB315	RB315	RB315
8	Bail Screw B	RB048	YB048	RB048	YB048
10	Bail Assembly	SB347	XB347	RB347	YB347
11	Line Roller	NB004	NB004	NB004	NB004
12	Line Roller Bushing	NB016	NB016	NB016	NB016
13	Bail Arm A	SB007	XB007	RB007	YB007
14	Bail Screw A	SB051	.	RB051	.
15	Bail Axle Washer	NB102	NB102	NB102	NB102
16	Bail Axle Screw	NB108	NB108	NB108	NB108
17	Rotor Nut	RB006	RB006	RB006	RB006
18	Rotor Nut Washer	RB065	RB065	RB065	RB065
19	Bail Spring	SB022	YB022	RB002	YB002
20	Bail Spring Cover	SB087	XB087	RB087	YB087
21	Bail Cover Screw	NB085	NB085	NB085	NB085
22	Trip Lever Spring	RB049	YB049	RB049	YB049
23	Trip Lever	SB019	XB019	RB019	YB019
24	Trip Lever Screw	RB037	RB037	RB037	RB037
25	Trip Lever Cover	.	XB024	RB024	YB024
26	Bail Cover Screw	NB085	NB085	NB085	NB085
27	Rotor	SB009	XB009	RB009	YB009
28	Bearing Retainer Screw	NB080	NB080	NB080	NB080
29	Bearing Retainer	RB040	YB040	RB040	YB040
30	Ball Bearing	RB028	RB028	RB028	RB028
31	Pinion	RB011	RB011	RB011	RB011
32	Body Assembly	SB301	XB301	RB301	YB301
33	Anti-Reverse Lever	RB059	RB059	RB059	RB059
34	Anti-Reverse Lever Spring	RB090	RB090	RB090	RB090
35	Anti-Reverse Lever Pin	NB091	NB091	NB091	NB091
36	Click Claw Screw	NB067	NB067	NB067	NB067
38	Stopper	RB083	RB083	RB083	RB083

11

* Not Used On Model

KEY NO.	DESCRIPTION	MODEL PS10	MODEL PS10CC	MODEL PS20	MODEL PS20CC
39	Sliding Pin	RB081	RB081	RB081	RB081
40	Click Claw	RB068	RB068	RB068	RB068
41	Slider Holder	RB104	RB104	RB104	RB104
42	Drag Washer C	RB046	RB046	RB046	RB046
43	Click Gear	RB066	RB066	RB066	RB066
44	Drag Washer A	RB030	RB030	RB030	RB030
45	Drag Washer B	RB039	RB039	RB039	RB039
46	Drag Washer D	RB071	RB071	RB071	RB071
47	Drag Coil Spring	RB031	RB031	RB031	RB031
48	Drag Nut	RB112	RB112	RB112	RB112
49	Drag Retainer Ring	RB070	RB070	RB070	RB070
50	Drag Knob	RB032	RB032	RB032	RB032
51	Drag Screw	NB079	NB079	NB079	NB079
52	Crank Gear	RB012	RB012	RB012	RB012
53	Oscillator Slider	RB025	RB025	RB025	RB025
54	Crank Gear Shim	RB026	RB026	RB026	RB026
56	Anti-Reverse Pawl	RB063	RB063	RB063	RB063
57	Anti-Reverse Pawl Screw	RB089	RB089	RB089	RB089
58	Side Plate Assembly	SB323	XB323	RB323	YB323
59	Side Plate Screw	NB057	NB057	NB057	NB057
60	Handle Cap	NB073	NB073	NB073	NB073
61	Handle Assembly	RB318	RB318	RB318	RB318
62	Anti-Reverse Ratchet	RB060	XB060	RB060	XB060
63	Anti-Reverse Lever Cam	RB099	RB099	RB099	RB099
64	Slider Spring	RB086	RB086	RB086	RB086
65	Anti-Reverse Lever Cam Screw	RB107	RB107	RB107	RB107
68	Kick Lever Pin	RB062	.	RB062	.
69	Trigger Holder	.	YB113	.	YB113
70	Trigger Spring	.	YB114	.	YB114
71	Trigger	.	YB115	.	YB115
72	Trigger Pin	.	YB116	.	YB116
73	Trigger Holder Screw	.	YB117	.	YB117
76	Drag Washer E	YB118	YB118	YB118	YB118

12

* Not Used On Model

MODEL	APPLICATION	GEAR RATIO	LINE CAPACITIES (Yards/Pound Test)	WEIGHT (oz)
PS10	Lt. Freshwater	4.8:1	130 6	9.2
PS10CC	Lt. Freshwater	4.8:1	130 6	9.4
PS20	Med. Freshwater	4.8:1	160 8	9.7
PS20CC	Med. Freshwater	4.8:1	160 8	9.9
PS40	Hvy. Fresh Lt. Salt	4.6:1	190 12	11.6
PS50	Med. Saltwater	4.4:1	200 17	14.5
PS70	Hvy. Saltwater	4.2:1	275 20	20.0

* Except PS70 which features an aluminum spool.