

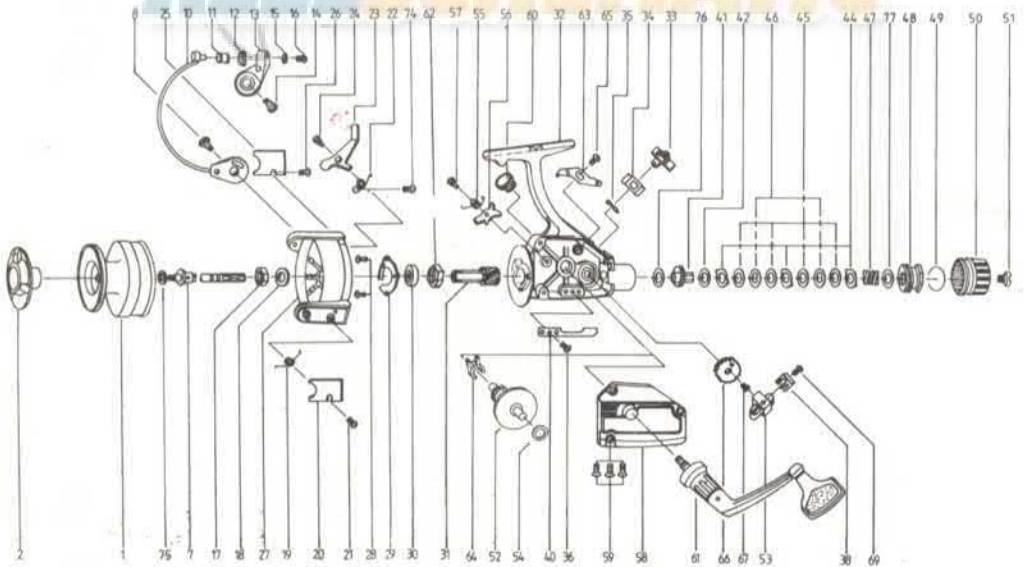


pro
staff™

SPINNING
OWNER'S
MANUAL

MODEL PS40 - PS50 - PS70 DIAGRAM

REELS SCHEMATIC



KEY NO.	DESCRIPTION	MODEL			All Season's Bait & Tackle 9717 Camino Road Spring Valley, CA 92077 615-697-2100	Bucko's Parts & Service 191 Stafford Rd. Fall River, MA 02724 617-674-7900
		PS40	PS50	PS70		
1	Spool Assembly	PB321	NB321	ZB321	Angelo's Parts & Service Ctr. 35 Tippett New Port Richey, FL 33552 813-947-6125	Charlie's Sporting Goods 7401 N. Westwood Ave. Albuquerque, NM 87111 505-884-4545
2	Locking Knob			ZB050	Angelo's Inn 2205 S. Highland Dr. Salt Lake City, UT 84106 801-466-2921	Chuck's Rod & Reel 5350 Main Street Springfield, OR 97477 503-747-7861
7	Center Shaft Assembly	PB315	NB315	ZB315	Anglenorth 1675 Lincoln Hwy Lancaster, PA 17602 717-299-4539	Coren's Rod & Reel 8424 N. Westwood Ave. Chicago, IL 60645 312-743-2980
8	Bail Screw B	PB048	NB048	ZB048	B & B Reel Repair P.O. Box 197 Concho, AZ 85924 602-337-4203	Dave's Parts & Service 805 North Main St. North Canton, OH 44720 216-499-4386
10	Bail Assembly	PB347	NB347	ZB347	Bob's Reel Repair 1949 Winnago Madison, WI 53704 608-249-9392	Dehette Tackle & Parts Inc. 2710 State Street Saginaw, MI 48602 517-790-0330
11	Line Roller	PB004	NB004	ZB004	Bob's Reel Service 406 South Lincoln Lincoln, NE 68537 303-967-1107	Del Re Service 3830 N. 16th St. Phoenix, AZ 85016 602-266-8218
12	Line Roller Bushing	PB016	NB016	ZB016	Clenn's Reel Repair 2010 East 9th St. Des Moines, IA 50316 515-265-2990	Metropolitan Rod & Reel 1815 E. S. Center Springfield, MO 65806 816-444-0670
13	Bail Arm A	PB007	NB007	ZB007	Haven's Sporting Goods 2141 Coon Rapids Blvd Coon Rapids, MN 55433 612-795-5040	Mike's Rod & Reel 3901 English Ave. Indianapolis, IN 46201 317-356-6888
14	Bail Screw A	PB051	NB051	ZB051	Jeff's Sporting Goods 303 East Valley Blvd San Gabriel, CA 91776 213-288-6141	Oliver Damon Reel Repair 4530 S.E. Hawthorne Blvd Portland, OR 97215 503-252-3193
15	Bail Axle Washer	PB102	NB102	NB102	John's Reel Repair 9386 Portac Lake Rd Poncha, MI 48954 313-666-2367	Outdoor Sportsman Div. J&V 24 Seneca Ave. Rochester, NY 14621 716-266-0808
16	Bail Axle Screw	PB108	NB108	ZB108	Jordan Zebco Warranty Box 96 C Lodi, CA 95240 916-476-5620	Paul's Bait & Tackle 4421 Chippewa St. Louis, MO 63116 314-773-6221
17	Rotor Nut	NB006	NB006	ZB006	Lehr's Economy Tackle Shop 1366 N. Tamiami Tr. N. Ft. Myers, FL 33903 813-995-2280	Perry's Wholesale 240 E. Grand Ave. Waco, TX 76797 715-423-2360
18	Rotor Nut Washer	NB065	NB065	NB065	McDowell's Sporting Goods 1312 S. Broadway Pasadena, TX 77502 713-472-5934	Sonny's Sporting Goods 107 E. Ute Farmington, MN 57401 505-325-3434
19	Bail Spring	PB022	NB022	ZB022		
20	Bail Spring Cover	PB087	NB087	ZB087		
21	Bail Cover Screw	NB085	NB085	NB085		
22	Trip Lever Spring	NB049	NB049	ZB049		
23	Trip Lever	PB019	NB019	ZB019		
24	Trip Lever Screw	NB037	NB037	ZB037		
25	Trip Lever Cover	PB024	NB024	ZB024		
26	Bail Cover Screw	NB085	NB085	NB085		
27	Rotor	PB009	NB009	ZB009		
28	Bearing Retainer Screw	NB080	NB080	NB080		
29	Bearing Retainer	NB040	NB040	ZB040		
30	Bail Bearing	NB028	NB028	ZB028		
31	Pinion	NB011	NB011	ZB011		
32	Body Assembly	PB301	NB301	ZB301		
33	Anti-Reverse Lever	NB059	NB059	ZB059		
34	Anti-Reverse Lever Spring	NB090	NB090	ZB090		
35	Anti-Reverse Lever Pin	NB091	NB091	NB091		
36	Click Claw Screw	ZB067	ZB067	ZB067		
38	Stopper	NB083	NB083	ZB083		
40	Click Claw	NB068	NB068	ZB068		
41	Slider Holder	NB104	NB104	ZB104		

14

Southeastern Reel Repair
541 Bishop St., N.W.
Atlanta, GA 30318
404-352-1800

Sports Unlimited, Inc.
615 Plaza Road
Gulfport, MS 39501
601-863-5639

Surplus Center (Burdens)
1000 West O St.
Lincoln, NE 68528
402-474-4366

The Tackle Box
8427 1st Ave. North
Birmingham, AL 35206
205-833-9311

KEY NO.	DESCRIPTION	MODEL		
		PS40	PS50	PS70
42	Drag Washer C	NB046	NB046	ZB046
44	Drag Washer A	NB030	NB030	ZB030
45	Drag Washer B	NB039	NB039	ZB039
46	Drag Washer D	NB071	NB071	ZB071
47	Drag Coil Spring	NB031	NB031	ZB031
48	Drag Nut	NB112	NB112	ZB112
49	Drag Retainer Ring	NB070	NB070	ZB070
50	Drag Knob	NB032	NB032	ZB032
51	Drag Screw	NB079	NB079	NB079
52	Crank Gear	NB021	NB021	ZB012
53	Oscillator Slider	NB025	NB025	ZB025
54	Crank Gear Shim	NB026	NB026	ZB026
55	Anti-Reverse Pawl Spring	NB061	NB061	ZB061
56	Anti-Reverse Pawl	NB063	NB063	ZB063
57	Anti-Reverse Pawl Screw	NB089	NB089	ZB089
58	Side Plate Assembly	PB323	NB323	ZB323
59	Side Plate Screw	NB057	NB057	ZB057
60	Handle Cap	NB073	NB073	ZB073
61	Handle Assembly	NB318	NB318	ZB318
62	Anti-Reverse Ratchet	NB060	NB060	ZB060
63	Anti-Reverse Lever Cam	NB099	NB099	ZB099
64	Slider Spring	NB086	NB086	ZB086
65	Lever Cam Screw	NB107	NB107	ZB107
66	Oscillator Gear	NB053	NB053	ZB053
67	Oscillator Gear Screw	NB078	NB078	ZB078
68	Kick Lever Pin	NB062	NB062	ZB062
69	Stopper Screw	NB084	NB084	NB084
74	Trip Lever Spring Screw	*	*	YB120
75	Spool Shim Washer	*	*	YB121
76	Drag Washer E	YB119	YB119	YB122
77	Drag Shim Washer	*	*	YB123

ZEBCO

A Brunswick Company
P.O. Box 270, Tulsa, Oklahoma 74101

15

* Not Used On Model

MODEL	APPLICATION	GEAR RATIO	LINE CAPACITIES (Yards/Pound Test)	WEIGHT (oz)
PS10	Lt. Freshwater	4.8:1	130 6	9.2
PS10CC	Lt. Freshwater	4.8:1	130 6	9.4
PS20	Med. Freshwater	4.8:1	160 8	9.7
PS20CC	Med. Freshwater	4.8:1	160 8	9.9
PS40	Hvy. Fresh Lt. Salt	4.6:1	190 12	11.6
PS50	Med. Saltwater	4.4:1	200 17	14.5
PS70	Hvy. Saltwater	4.2:1	275 20	20.0

* Except PS70 which features an aluminum spool.