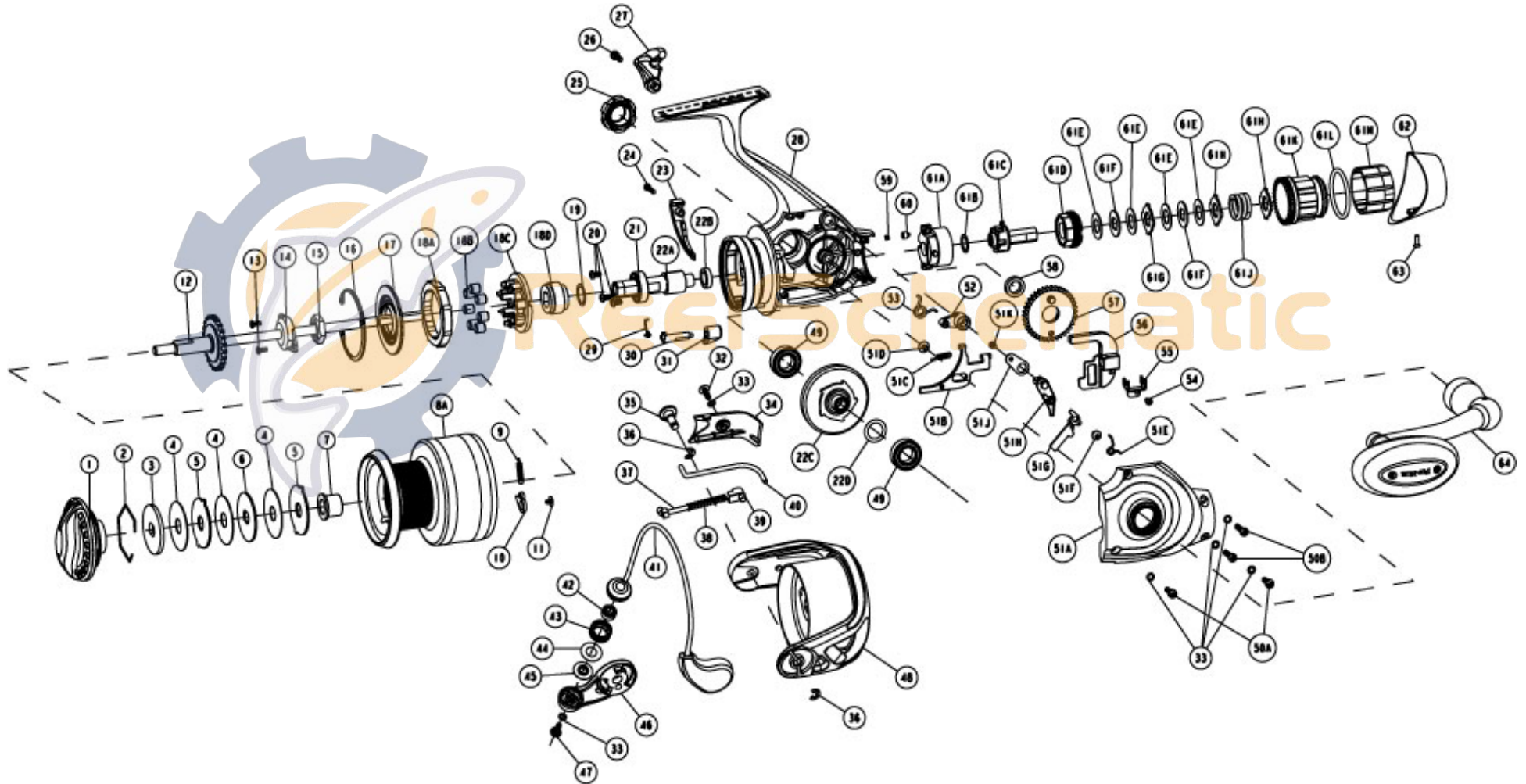


# FIN-NOR<sup>®</sup>

LEGENDARY TACKLE SINCE 1933

## Sportfisher Teaser FST60



# FIN-NOR<sup>®</sup>

LEGENDARY TACKLE SINCE 1933

## Sportfisher Teaser FST60

### Fin-Nor Sportfisher Teaser FST60 Reel Part List

Key #	Description	Qty	Part No.	Key #	Description	Qty	Part No.
1	DRAG KNOB ASSEMBLY	1	JO332-01	37	PIN-ACTUATOR SPRING	1	JO031-01
2	SPOOL RETAINER	1	JO038-01	38	ACTUATOR SPRING	1	YAA089-01
3	DRAG WASHER "D"	1	LO080-01	39	ACTUATOR	1	JO258-01
4	DRAG WASHER "B"	3	JO033-01	40	KICK LEVER	1	JO019-01
5	DRAG WASHER "A"	2	JO081-01	41	BAIL ASSEMBLY	1	JO347-01
6	DRAG WASHER "D"	1	JO080-01	42	LINE ROLLER BEARING	1	GH202-01
7	SPOOL BUSHING	1	JO160-01	43	LINE ROLLER	1	CH004-02
8	SPOOL ASSEMBLY KIT	1	LO4321-02	44	LINE ROLLER WASHER	1	DH102-01
	2 - SPOOL RETAINER	1	JO038-01	45	LINE ROLLER COLLAR	1	CH102-01
	3 - DRAG WASHER "D"	1	LO080-01	46	ARM LEVER	1	JO007-01
	4 - DRAG WASHER "B"	3	JO033-01	47	SCREW - LINE SLIDER	1	AQ108-01
	5 - DRAG WASHER "A"	2	JO081-01	48	ROTOR	1	JO009-01
	6 - DRAG WASHER "D"	1	JO080-01	49	BODY BALL BEARING	2	BT157-01
	7 - SPOOL BUSHING	1	JO160-01	50	BODY COVER SCREW KIT	1	MT4057-01
	8A - SPOOL	1	LO021-02		50A - SIDE COVER SCREW	2	AT057-01
	9 - CLICK SPRING	1	JO068-01		50B - SIDE COVER SCREW	2	BT136-01
	10 - SPOOL CLICKER	1	JO103-01		33 - WASHER	4	RQ142-01
	11 - SCREW (CLICKER)	1	GU077-04	51	BODY COVER KIT	1	MT4023-02
9	CLICK SPRING	1	JO068-01		51A - SIDE COVER	1	MT023-02
10	SPOOL CLICKER	1	JO103-01		51B - PAWL	1	MT063-01
11	SCREW (CLICKER)	1	GU077-04		51C - SPRING - PAWL	1	MT089-01
12	MAIN SHAFT ASSEMBLY	1	YAA315-01		51D - SCREW - PAWL	1	NT168-01
13	ROTOR NUT LOCK SCREW	2	JO094-01		51E - SPRING - TRIP LINK	1	MT117-01
14	MAIN SHAFT BUSHING	1	BT214-01		51F - SCREW	1	NT163-01
15	ROTOR NUT	1	BT006-01		51G - TRIP LINK	1	MT096-01
16	RETAINER RING - CLUTCH SEAL	1	DT060-01		51H - PIVOT PIN	1	MT114-01
17	SEAL ASSEMBLY	1	DT166-02		51J - RETAINER PLATE	1	MT118-01
18	CLUTCH ASSEMBLY KIT	1	UK4363-02		51K - SCREW	1	MT111-01
	18A - CLUTCH LOCK RING	1	UK063-01	52	PIN - LEVER	1	MT113-01
	18B - CLUTCH ROLLER	7	UK165-01	53	SPRING - LEVER	1	MT216-01
	18C - CLUTCH RETAINER	1	UK040-02	54	SCREW - SHAFT RETAINER	1	MT111-01
	18D - CLUTCH SLEEVE	1	UK139-01	55	SLIDER RETAINER	1	MT078-01
19	WASHER	1	YAA110-01	56	O/S SLIDER	1	MT025-01
20	SCREW-LOCK BEARING	3	TK057-01	57	O/S GEAR	1	BT053-01
21	PINION BALL BEARING	1	BT157-01	58	O/S GEAR BUSHING	1	BT158-01
22	GEAR KIT	1	MT4011-01	59	SPRING - CLICKER	1	MT083-01
	22A - PINION GEAR	1	BT011-01	60	CLICKER	1	HT149-01
	22B - PINION BUSHING	1	BT158-01	61	BAIT DRAG ASSEMBLY KIT	1	MT4338-01
	22C - DRIVE GEAR ASSEMBLY	1	MT312-01		61A - HOUSING - BAIT DRAG	1	MT038-01
	22D - D.GEAR ADJUST WASHER	1	GU105-36		61B - WASHER - FRICTION	1	MT039-01
23	TRIP RAMP	1	YAA243-01		61C - DRIVE ASSEMBLY	1	MT366-01
24	SCREW - TRIP RAMP	1	YAA136-01		61D - ADJUSTMENT SCREW	1	MT034-01
25	HANDLE CAP	1	BT073-01		61E - WASHER - FRICTION	4	MT030-02
26	SCREW	1	MT106-01		61F - WASHER - KEYED	2	MT045-01
27	LEVER	1	MT112-01		61G - WASHER - TABBED	1	MT080-02
28	BODY	1	MT001-02		61H - WASHER - TABBED	2	MT080-01
29	STOPPER CAM SPRING	1	TK089-01		61J - KNOB SPRING	1	MT043-01
30	STOPPER CAM	1	BT090-01		61K - BAIT DRAG KNOB	1	MT064-01
31	STOPPER LEVER	1	RQ059-01		61L - O RING	1	MT164-01
32	ARM LEVER COVER SCREW	1	GU077-02		61M - BAIT DRAG COVER	1	MT071-01
33	ARM LEVER COVER WASHER	2	RQ142-01	62	REAR CAP	1	MT250-01
34	ARM LEVER COVER	1	JO087-01	63	SCREW-REAR CAP	1	MT168-01
35	PIN	1	PG042-01	64	HANDLE ASSY	1	ZAA318-01
36	E-CLIP	2	GH034-01				